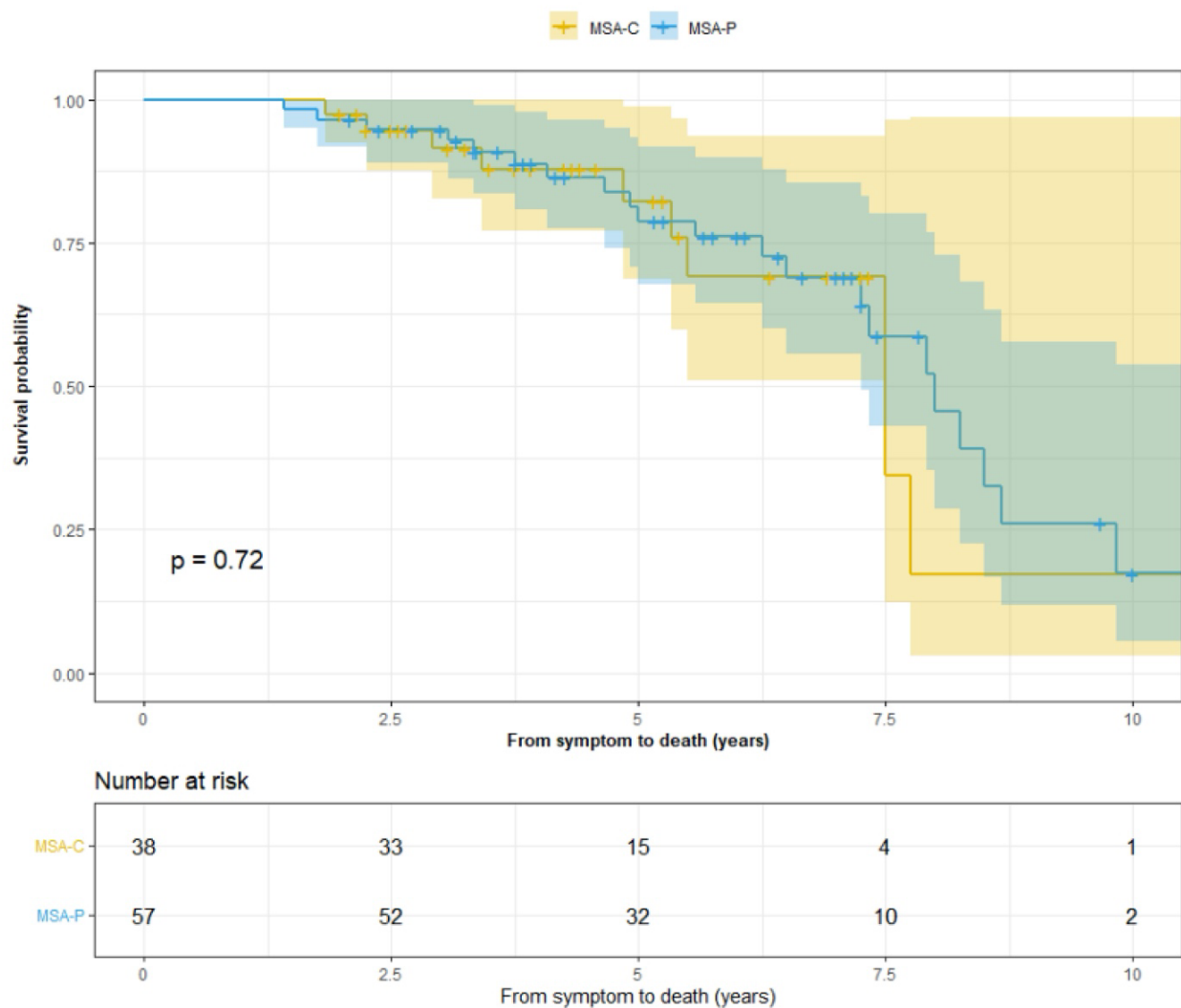
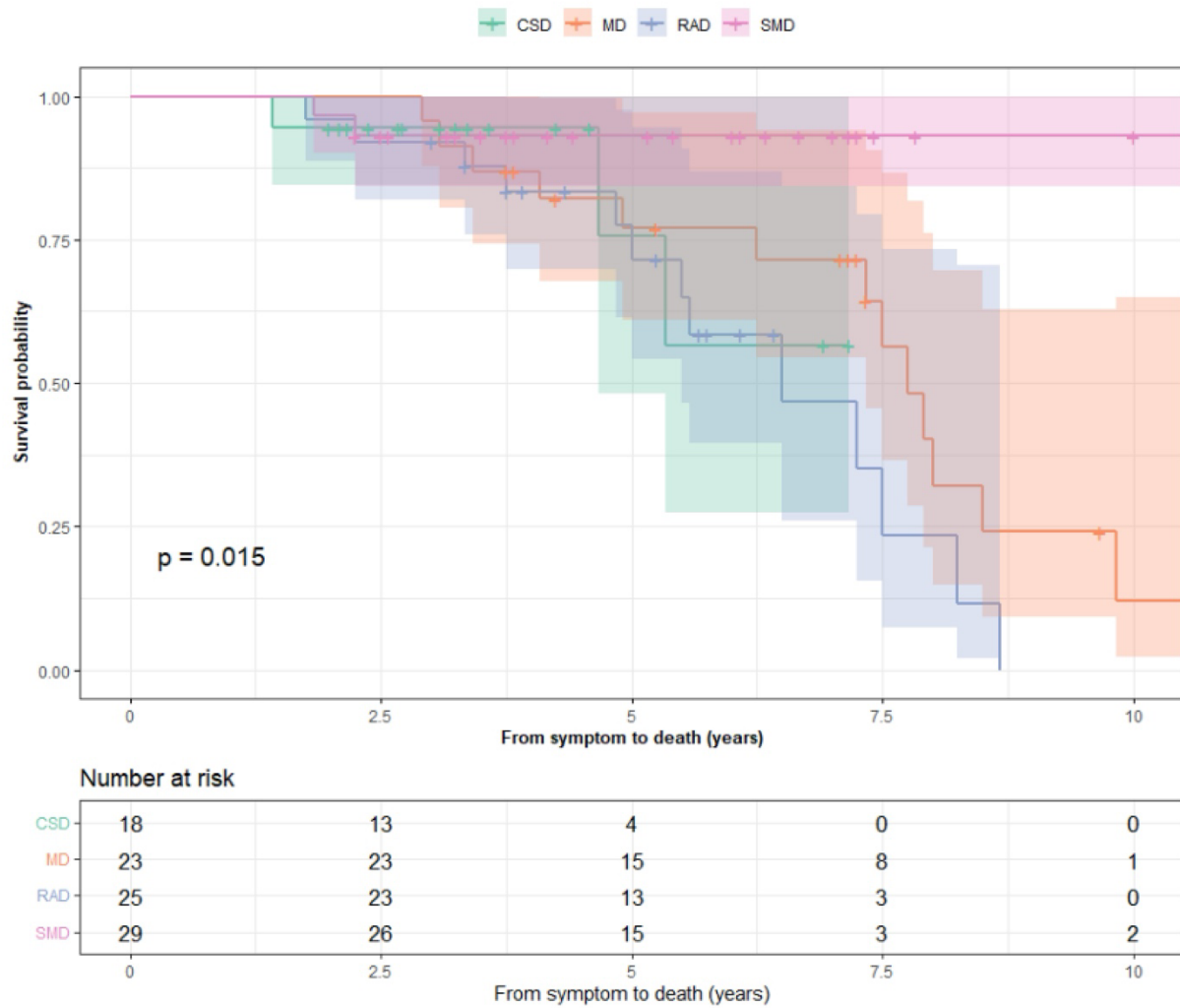


Supplementary Material

Data-Driven Subtypes of Multiple System Atrophy and Their Implications for Prognosis



Supplementary Figure 1. K–M survival curves for the probability of death from symptom onset to death in patients with MSA-P (n= 57) compared with those in patients with MSA-C (n=38) (p=0.72). MSA-P, MSA with parkinsonism variant; MSA-C, MSA with cerebellar variant.



Supplementary Figure 2. Comparison of Kaplan–Meier curves for the probability of death between patients in four clusters ($p=0.015$). CSD, cerebellar symptom dominant; MD, malignant diffuse; RAD, rigid akinetic dominant; SMD, sleep and mood disorder dominant.

Supplementary Table 1. Results of multivariate Cox proportional hazards regression analyses for survival and multivariate logistic analysis for bedbound status.

Variable	Death		Bedbound	
	HR (95% CI)	<i>p</i>	OR (95% CI)	<i>p</i>
Age (y)	1.01 [0.97,1.09]	0.323	0.91 [0.83,1.0]	0.044
Symptom onset to diagnosis (y)	0.44 [0.29,0.67]	<0.001	0.85 [0.60,1.21]	0.366
Sex				
Female	1.0 (reference)		1.0 (reference)	
Male	0.92 [0.42,2.01]	0.831	0.64 [0.18,2.30]	0.489
CA cluster^a				
SMD	1.0 (reference)		1.0 (reference)	
MD	7.16 [1.52,33.76]	0.013	2.01 [0.34,11.89]	0.440
RAD	7.27 [1.56,33.83]	0.011	2.33 [0.51,10.65]	0.277
CSD	4.42 [0.69,28.07]	0.115	0.13 [0.01,1.23]	0.075
CA cluster^b				
MD	1.0 (reference)		1.0 (reference)	
RAD	1.02 [0.41,2.54]	0.973	1.16 [0.15,8.76]	0.889
CA cluster^c				
CSD	1.0 (reference)		1.0 (reference)	
MD	1.62 [0.38,6.98]	0.518	15.44 [1.05,226.13]	0.046
RAD	1.65 [0.42,6.51]	0.478	17.83 [1.60,198.75]	0.019

^aAfter adjusting for age, years from symptom onset to diagnosis and sex, SMD was used as the reference category. ^bAfter adjusting for age, years from symptom onset to diagnosis and sex, MD was set as the reference category. ^cAfter adjusting for age, years from symptom onset to diagnosis and sex, CSD was set as the reference category.

CA, cluster analysis cluster. CSD, cerebellar symptom dominant; SMD, sleep and mood disorder dominant; RAD, rigid akinetic dominant; MD, malignant diffuse.