

# A nutrigenetic approach for investigating the chemopreventive effects of black raspberries during the development of preneoplastic esophagi in rats

Pan Pan<sup>a,1</sup>, Alan A. Dombkowski<sup>b</sup>, Li-Shu Wang<sup>a</sup> and Gary D. Stoner<sup>a,\*</sup>

<sup>a</sup>*Department of Medicine, Division of Hematology and Oncology, Medical College of Wisconsin, Milwaukee, WI, USA*

<sup>b</sup>*Department of Pediatrics, Wayne State University School of Medicine, Detroit, MI, USA*

Received 9 October 2018; accepted 28 October 2018

## Abstract.

**BACKGROUND:** Large epidemiological studies have shown that diets high in fruits reduce the risk of esophageal squamous cell carcinoma (ESCC).

**OBJECTIVE:** The current study investigated the effects of black raspberries (BRBs) on gene expression during the development of preneoplastic esophagi in rats.

**METHODS:** Using a post-initiation protocol, F344 rats were injected with *N*-nitrosomethylbenzylamine (NMBA) and then fed either a control diet or 5% BRBs. At weeks 9, 15, and 35, we euthanized subgroups of the rats and collected preneoplastic esophagi to isolate RNA samples for DNA microarray.

**RESULTS:** Along the development of NMBA-induced preneoplastic esophagi, NMBA injections led to differential expression of 1181 genes comparing to control rats, and dietary BRBs modulated 428 genes in esophagi from NMBA-treated rats. There are 137 common genes between 1181 and 428 gene sets, and BRBs significantly reversed the expression of 133 genes. These genes are associated with multiple gene oncology functions. BRBs induced an 8.8-fold gene enrichment on the pathway of inflammatory response and regulated 10 genes involved in this pathway. Among them, BRBs significantly reversed the expression of pro-inflammatory cytokines, such as *CCL2*, *S100A8*, and *IL19*.

**CONCLUSIONS:** BRBs exhibit strong anti-inflammatory effects against NMBA-induced rat esophageal tumorigenesis.

Keywords: Black raspberries, rat preneoplastic esophagi, NMBA, DNA microarray, inflammatory response

## Abbreviations

BRBs	black raspberries
CCL2	C-C motif chemokine ligand 2
CCR2	CC chemokine receptor 2
CI	confidence interval

---

<sup>1</sup>Co-corresponding Author.

\*Corresponding author: Gary D. Stoner, Department of Medicine, Division of Hematology and Oncology, Medical College of Wisconsin, 8701 Watertown Plank Road, Milwaukee, 53226, WI, USA. E-mail: gstoner@mcw.edu.

DII	dietary inflammatory index
DMSO	dimethyl sulfoxide
EAC	esophageal adenocarcinoma
EC	esophageal cancer
ESCC	esophageal squamous cell carcinoma
FDR	false discovery rate
IARC	The International Agency for Research on Cancer
IL19	interleukin 19
KRT16	keratin 16
MCP-1	monocyte chemoattractant protein-1
MDA-7	melanoma differentiation-associated antigen 7
MRP8	myeloid-related protein 8
NMBA	N-nitrosomethylbenzylamine
NPPB	natriuretic peptide precursor type B
PGE <sub>2</sub>	prostaglandin E <sub>2</sub>
RR	risk ratio
S100A8	S100 calcium-binding protein A8.

## 1. Introduction

Esophageal cancer (EC) is the 6th leading cause of cancer-related death worldwide [1]. The two main types of EC are esophageal squamous cell carcinoma (ESCC) and esophageal adenocarcinoma (EAC). The International Agency for Research on Cancer (IARC) estimates that, in 2012, 88% of the EC cases were ESCC and 12% were EAC [2]. The geographic distribution of ESCC varies greatly, with more than 10-fold differences between countries [3]. Regions of high incidence include Eastern to Central Asia, along the Rift Valley in East Africa, and into South Africa [3]. Many risk factors have been identified to explain the high incidence of ESCC in these regions, such as smoking, heavy alcohol consumption, pro-inflammatory diet, high-temperature foods, and poor oral health [3].

A healthy dietary pattern is an important contributing factor to reduce the risk of many types of cancer, including colorectal cancer [4] and EC [5]. For example, one meta-analysis involving a total of 57 cohort studies concluded that the risk of ESCC was inversely associated with fruit intake [risk ratio (RR) for 100 g/day increment: 0.84; 95% confidence interval (CI): 0.75–0.94], and positively associated with intakes of processed meats (RR for 50 g/day increment: 1.59; 95% CI: 1.11–2.28), processed and red meats (RR for 100 g/day increment: 1.37; 95% CI: 1.04–1.82), and alcohol (RR for 10 g/day increment: 1.25; 95% CI: 1.12–1.41) [6]. Another meta-analysis involving 11 prospective cohort studies and 29 case-control studies evaluated the risk of developing ESCC using the dietary inflammatory index (DII) score, which represents stronger pro-inflammatory potential of diet with higher scores [7]. This study observed that 24% increased risk of developing ESCC for each unit higher of the DII scores (pooled RR: 1.24; 95% CI: 1.10–1.38) [7]. Similar results were found in Japan [8], China [9], Iran [10], Italy [11], and Sweden [12].

Berries including strawberries, blueberries, blackberries and raspberries, are widely consumed fruits worldwide and have many benefits to our health [13–15]. Our laboratory has long been evaluating the chemopreventive effects of berries against cancer including ESCC [16–38]. The widely used animal model for ESCC studies is the induction of esophageal papillomas in Fisher 344 (F344) rats with *N*-nitrosomethylbenzylamine (NMBA). NMBA is present in many foods, including grilled and smoked meat, pickled and preserved vegetables [39], and moldy corn in some high-incidence regions of China [40]. Our previous studies demonstrated that subcutaneous (s.c.) injections of NMBA (0.3 mg/kg body weight, three times per week for 5 weeks) induced esophageal preneoplasia by 15–17 weeks [41], and 100% esophageal tumor incidence by 25–35 weeks in F344 rats [42]. Most tumors

were squamous papillomas because the occlusive effects of the developing papillomas led to significant body weight loss before carcinomas could develop in these rats [30, 42]. Black raspberries (BRBs) contain high levels of anthocyanins, ellagitannins, and dietary fiber, and have been shown to suppress the development of NMBA-induced esophageal papillomas in rats [36]. In addition, BRBs modulated the expression of proteins associated with proliferation, apoptosis, inflammation, and angiogenesis in NMBA-induced rat esophageal papillomas [42]. In the current study, we reported the results of companion animals from our previous studies [41, 42] and investigated the effects of BRBs on gene expressions during the development of NMBA-induced preneoplastic esophagi in rats. Our results showed that BRBs reversed NMBA-induced dysregulation of genes regulating inflammation.

## 2. Materials and methods

### 2.1. Animals, reagents, and diets

Four- to five-week-old male F344 rats were obtained from Harlan Sprague–Dawley (Indianapolis, IN). All rats were housed two per cage under standard conditions ( $20 \pm 2^\circ\text{C}$ ,  $50 \pm 10\%$  relative humidity, 12-h light/dark cycles). Food and water were available *ad libitum*. Hygienic conditions were monitored and maintained by twice weekly cage changes. All animal procedures followed the recommendations of the American Association of Laboratory Animal Care (AALAC).

NMBA was purchased from Ash Stevens (Detroit, MI), and dimethyl sulfoxide (DMSO) was purchased from Sigma (St. Louis, MO). NMBA was dissolved in a solution of DMSO/water (20:80). All reagents were prepared immediately prior to usage.

The American Institute of Nutrition-76A (AIN-76A) synthetic diet served as the control diet and was purchased from Dyets, Inc. (Bethlehem, PA). BRB powder was purchased from Berri Products LLC (Corvallis, OR) and stored at  $4^\circ\text{C}$ . The sugar and starch content of the BRB diet was adjusted to create an isocaloric diet [18–21, 23, 41, 42].

### 2.2. Animal experiments

The animal use protocol was approved by Institutional Animal Care and Use Committee at The Ohio State University in 2008 under the protocol number “2008A0076” and title “Efficacy of berries on NMBA-induced esophageal tumorigenesis in the F-344 rat.”

A post-initiation protocol was used to investigate BRBs’ chemopreventive effects on rat esophageal tumorigenesis (Fig. 1) [41, 42]. Two weeks after arrival in the animal facility, rats were randomly assigned into three groups (Fig. 1). Rats in Group 1 (G1) were given the control AIN-76A diet and were injected subcutaneously (s.c.) with DMSO/water (20:80). Rats in Groups 2 (G2) and 3 (G3) were given the control diet and were injected s.c. with NMBA (0.3 mg/kg body weight) three times per week for 5 weeks. After the injections, the rats in G2 continued on the control diet, whereas the rats in G3 were fed 5% BRB diet. Nine rats from each group were euthanized at weeks 9, 15, and the end of the study (week 35). The esophagus of each rat was collected, opened longitudinally, and the whole epithelium (except large papillomas) was snap-frozen in liquid nitrogen for RNA isolation and DNA microarray analysis.

### 2.3. RNA isolation, DNA microarray, and data analysis

RNA isolation and extraction, and DNA microarray analysis have been described [41, 42]. Total RNA was isolated according to manufacturer’s instructions (AllPrep DNA/RNA Mini kit, Qiagen, Valencia, CA) and stored at  $-80^\circ\text{C}$  for further analysis of transcription changes. Agilent Rat Whole-Genome oligonucleotide arrays

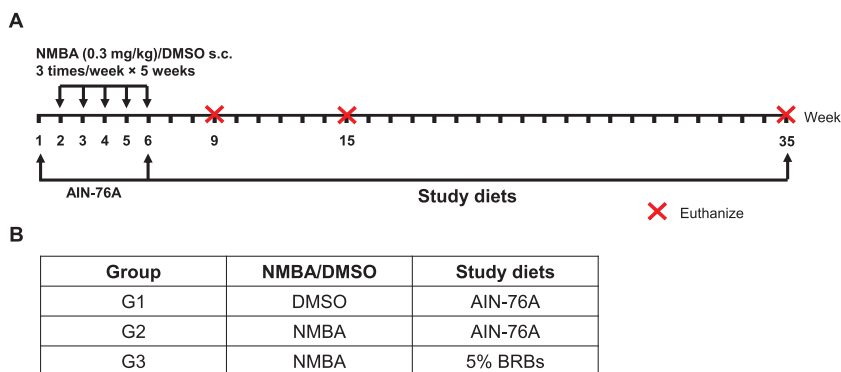


Fig. 1. A post-initiation protocol was used to investigate the effects of BRBs on gene expression during the development of NMBA-induced preneoplastic esophagi in rats. (A) Study protocol of the post-initiation model. Rats were injected s.c. with NMBA (0.3 mg/kg body weight) or DMSO three times per week for 5 weeks. Different study diets were given after NMBA injections till the end of study (week 35). Subgroups of rats were euthanized at weeks 9, 15, and 35. (B) Group assignment of the different study diets.

(Agilent Technologies, Santa Clara, CA) were used and 41,000 transcripts were detected in each microarray. For each time point, each group contained 9 rats. To reduce biological variation, samples from every 3 rats were combined, then triple microarrays were performed on each combined sample. This approach ensures appropriate biological replications within a limited number of microarrays [41, 42]. Normalized data for each microarray were imported into Rosetta Resolver for analysis (version 5.1.0.1.23; Rosetta Biosoftware). ANOVA was performed on log ratios using the Rosetta Resolver error model and weighting [43]. One-way ANOVA was used to identify significantly changed genes. A  $p$ -value less than 0.001 was considered statistically significant in each comparison. Genes with significant changes were filtered to identify those with more than 1.5-fold change. Then the selected genes were further analyzed for functional annotations using DAVID (Database for Annotation, Visualization and Integrated Discovery, <https://david.ncifcrf.gov/>).

### 3. Results and discussion

#### 3.1. BRBs significantly regulated expression levels of 137 genes that were changed by NMBA

The current study used a post-initiation protocol of NMBA-induced esophageal tumors in rats to investigate BRBs' effects on gene expression during the development of preneoplastic esophagi (Fig. 1). We have previously published the results of esophageal tumors from this study in which 5% BRBs were found to significantly decrease the number and size of papillomas in the esophagi of NMBA-treated rats [42]. Using esophageal samples collected at weeks 9, 15 and 35 during this study, we isolated RNA and performed DNA microarray. Three groups were DMSO + AIN-76A diet (G1), NMBA + AIN-76A diet (G2) and NMBA + 5% BRB diet (G3). We selected significantly ( $p < 0.001$ ) changed genes that were present in all three time-points for all three groups. Comparing G1 and G2, we identified 2014 genes with a minimum 1.5-fold change. After restricting the false discovery rate (FDR) to 0.1, we obtained 1181 significantly changed genes. We applied the same analysis to the comparison of G2 and G3 and identified 428 significantly changed genes. There are 137 common genes between 1181 and 428 gene sets (Fig. 2, Supplementary Table 1). Among them, 133 genes were reversed towards the control values by BRBs, suggesting that these genes contribute to the development of NMBA-induced preneoplastic esophagi and reversed by BRBs.

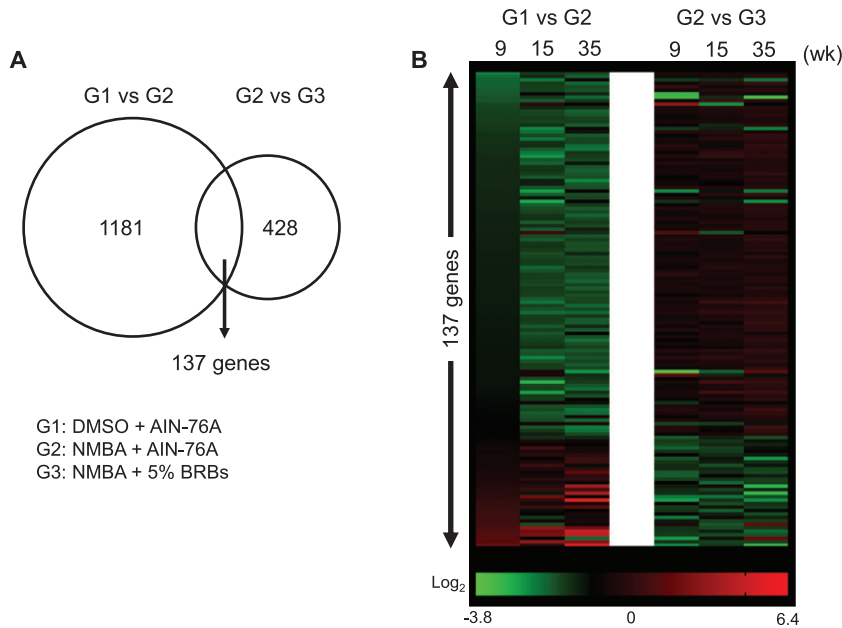


Fig. 2. BRBs significantly regulated expression levels of 137 genes that were changed by NMBA. (A) 1181 and 428 genes were significantly changed in the comparison between G1 and G2, and between G2 and G3, respectively. There are 137 common genes between 1181 and 428 gene sets. (B) Heatmap showed relative expression levels of 137 genes.

### 3.2. BRBs significantly regulated expression levels of 10 genes that associate with inflammatory response in NMBA-treated preneoplastic esophagi

We further analyzed the 137 genes for functional annotations using DAVID. Multiple gene ontology functions were identified (Table 1). Particularly, we detected an 8.8-fold gene enrichment in genes involved in the inflammatory response. Ten genes were associated with the inflammatory response pathway, including C-C motif chemokine ligand 2 (*CCL2*), S100 calcium-binding protein A8 (*S100A8*), tumor necrosis factor receptor superfamily member 19L (coded by *RELT* gene), keratin 16 (*KRT16*), apolipoprotein C-III (*APOC3*), interleukin 19 (*IL19*), natriuretic peptide precursor type B (*NPPB*), *IL24*, galanin (*GAL*), and selectin (*SELE*) (Fig. 3).

*CCL2*, also known as monocyte chemoattractant protein-1 (MCP-1), is a chemokine that binds to the CC chemokine receptor 2 (CCR2) and regulates monocyte chemotaxis and T-lymphocyte differentiation [44]. It plays a pivotal role in the pathogenesis of cancer and inflammatory diseases, such as asthma, systemic lupus erythematosus, atherosclerosis, and colitis [44]. ESCC patients have high levels of *IL17A*, which stimulates ESCC cells to release *CCL2 in vitro* [45, 46]. Moreover, upregulated mRNA expression levels of *CCL2* have been reported in ESCC tumors than in tumor-free tissues [47]. *CCL2*-CCR2 signaling could promote angiogenesis thereby contributing to esophageal carcinogenesis [48]. Indeed, ESCC patients who expressed high levels of *CCL2* had a worse 5-year survival rate compared to those with negative *CCL2* expression [49]. In the current study, we observed a significant increase in *CCL2* gene expression in NMBA-treated rat esophagus and BRBs reversed that (Fig. 3A), suggesting that BRBs might inhibit angiogenesis through suppressing *CCL2*-CCR2 signaling pathway in the NMBA-treated rats [50].

*S100A8*, also known as myeloid-related protein 8 (MRP8), is a  $\text{Ca}^{2+}$ -binding protein that belongs to the S100 family. *S100A8* and *S100A9* (MRP14) usually co-exist in the form of heterodimer, known as calprotectin,

Table 1  
Functional annotations of 137 genes that were significantly changed in NMBA-induced preneoplastic esophagi in rats and regulated by BRBs

Functions	Number of genes	p-Value	Fold Enrichment	Bonferroni	Benjamini	FDR	Genes
Signal	36	1.42E-10	3.039912281	1.86E-08	1.86E-08	1.66E-07	CALCR, MIA, EDN3, CCL2, LRRRC4C, FNDC5, CD177, ALB, FGB, APOC3, TFF2, FIBIN, NEGR1, CHRNA3, ANGPTL4, ADAM28, CACNA2D1, RET, IL24, GAL, MMP13, A2ML1, AMBP, MMP10, UGT2B17, RELT, SCN4B, CARTPT, NPPB, SCGB3A1, AGR2, SELE, TSHR, ADGRL3, SGCA, LIPF
Secreted	20	1.29E-09	5.527113238	1.69E-07	8.44E-08	1.50E-06	MIA, EDN3, CCL2, S100A8, S100A9, IL24, GAL, MMP13, AMBP, MMP10, FNDC5, ALB, FGB, APOC3, TFF2, CARTPT, NPPB, FIBIN, ANGPTL4, LIPF
Disulfide bond	27	5.64E-09	3.545873124	7.38E-07	2.46E-07	6.57E-06	MIA, CALCR, EDN3, CCL2, LRRRC4C, ALB, FGB, TFF2, FIBIN, NEGR1, CHRNA3, ANGPTL4, ADAM28, CACNA2D1, RET, SCN2A, MMP13, TRDN, AMBP, MMP10, SCN4B, NPPB, CARTPT, TSHR, ADGRL3, SELE, LIPF
Signal peptide	27	1.17E-08	3.01740227	2.11E-06	2.11E-06	1.44E-05	MIA, CALCR, EDN3, CCL2, FNDC5, FGB, ALB, APOC3, TFF2, FIBIN, NEGR1, CHRNA3, ANGPTL4, CACNA2D1, IL24, GAL, MMP13, AMBP, MMP10, UGT2B17, SCN4B, NPPB, CARTPT, ADGRL3, TSHR, SELE, LIPF
Extracellular space	21	1.61E-08	4.410924103	2.06E-06	2.06E-06	1.87E-05	EDN3, CCL2, S100A8, IL19, S100A9, LRRRC4C, IL24, GAL, MMP13, A2ML1, AMBP, ALB, FGB, APOC3, TFF2, CARTPT, NPPB, SCGB3A1, AGR2, SELE, ANGPTL4
Glycoprotein	23	1.25E-06	3.128689747	1.63E-04	4.08E-05	0.001453635	CALCR, RET, CACNA2D1, CCL2, SCN2A, IL24, MMP13, TRDN, AMBP, FNDC5, FGB, APOC3, SCN4B, LRRRC66, FIBIN, SELE, TSHR, ADGRL3, NEFL, NEGR1, CHRNA3, ANGPTL4, LIPF
Inflammatory response	10	1.61E-06	8.812000603	0.001098859	0.001098859	0.002425742	CCL2, S100A8, RELT, KRT16, APOC3, IL19, NPPB, IL24, GAL, SELE

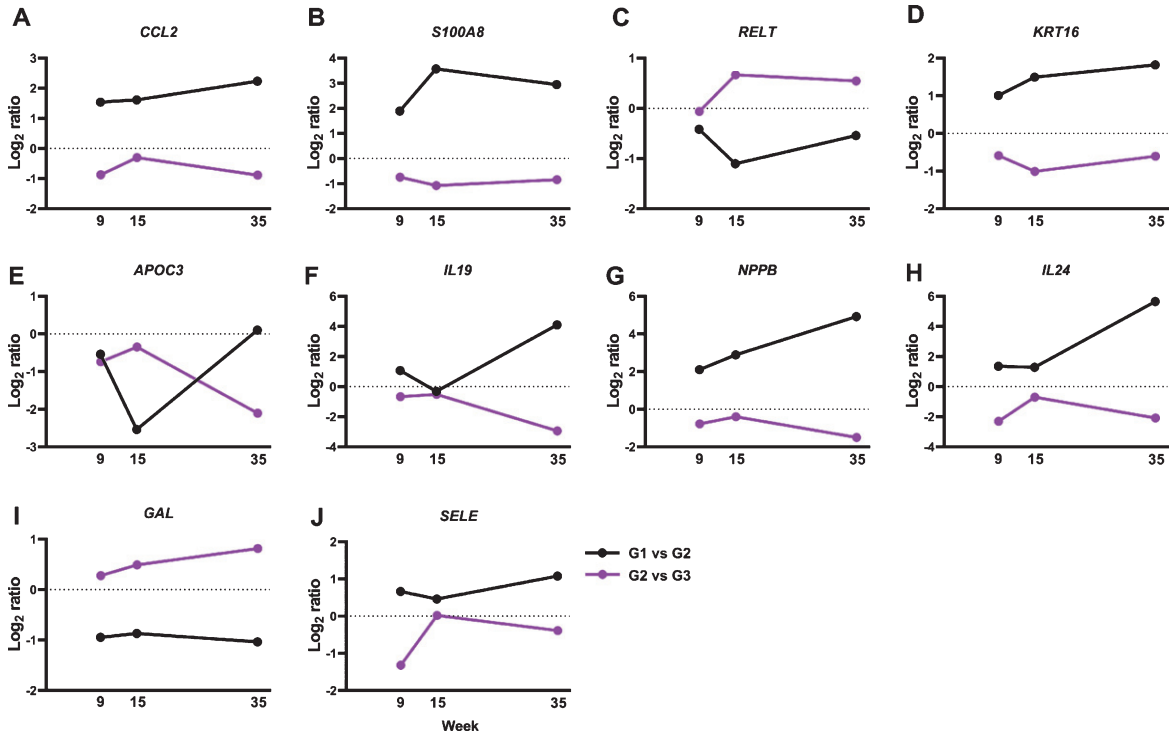


Fig. 3. BRBs significantly regulated expression levels of 10 genes that associate with inflammatory response. Normalized Log<sub>2</sub> ratio values were shown for (A) *CCL2*; (B) *S100A8*; (C) *RELT*; (D) *KRT16*; (E) *APOC3*; (F) *IL19*; (G) *NPPB*; (H) *IL24*; (I) *GAL*; and (J) *SELE*.

that is constitutively expressed in neutrophils and monocytes. The heterodimer functions to stimulate leukocyte recruitment and cytokine secretion thus playing an important role in modulating the inflammatory response [51]. Interestingly, studies of ESCC patients observed decreased levels of *S100A8* and *S100A9* in ESCC tumors compared to that in normal esophageal mucosa [52–54], whereas their expression levels increased in NMBA-induced esophageal tumors in rats [55, 56]. Similar with those rat studies, our current study observed a significant increase in the expression of *S100A8* in the NMBA-treated rat esophagi, which was reversed by BRBs (Fig. 3B). Therefore, the inconsistency between human and rat studies needs further investigation to clarify the role of *S100A8/S100A9* in the development of ESCC.

*IL19* and *IL24* [also known as melanoma differentiation-associated antigen 7 (MDA-7)] are members of the interleukin 10 (IL10) family of cytokines, which are involved in infectious and inflammatory diseases [57–61]. ESCC patients with advanced tumor stage showed increased levels of *IL19* [62], and we observed higher *IL19* gene expression in the NMBA-treated rat esophagus in the current study. In addition, BRBs significantly decreased levels of *IL19* gene expression (Fig. 3F), suggesting that BRBs might suppress *IL19*-promoted inflammation and carcinogenesis. In contrast, *IL24* serves as an anti-tumor cytokine, which inhibits tumor growth, invasion, metastasis and angiogenesis [63]. A Phase I/II clinical trial of patients with multiple advanced cancers demonstrated that intra-tumoral delivery of INGN 241 (a nonreplicating adenoviral construct expressing the *mda-7* transgene) induced tumor apoptosis and exerted immune-activating effects [64]. However, ESCC patients were not included in this clinical trial. Our current study detected higher levels of *IL24* gene expression in the NMBA-treated rat esophagus, and BRBs significantly decreased its expression (Fig. 3H). Therefore, the function of *IL24* in esophageal tumorigenesis needs further investigation.

Our previous studies also demonstrated BRBs' anti-inflammatory effects on NMBA-induced rat esophageal tumors. For example, 5% BRBs significantly decreased the levels of pro-inflammatory cytokines, such as prostaglandin E<sub>2</sub> (PGE<sub>2</sub>) [42] and IL5 [36]. In addition, using a prevention model, we administered BRBs to rats before, during, and after NMBA injections, and observed a lower level of pentraxin-3 by BRBs [37]. These results suggest that anti-inflammation is a significant signaling pathway underlying BRBs' anti-tumor effects.

Limited studies have investigated the role of other genes in the tumorigenesis. For example, increased serum levels of APOC3 were detected in EC patients among Kazakh people in Xinjiang region of China [65]. GAL-9 was shown to inhibit cell proliferation and promote apoptosis in EAC cell lines [66]. In addition, *RELT* was reported as one of the tumor-associated proteins that can be used for early diagnosis of breast cancer [67]. *KRT16* has been included in a list of 24 important hub genes as potential diagnostic biomarkers of metastatic melanoma [68]. *NPPB* was decreased by tolfenamic acid, which suppressed cell proliferation and increased apoptosis in colon tumors [69]. E-selectin (*SELE*) promoted the matrix adhesion of pancreatic cancer cells [70]. These results suggest that *RELT*, *KRT16*, *NPPB*, and *SELE* are involved in the tumorigenesis. More research is warranted to examine their roles in the development of EC.

#### 4. Conclusions

In summary, results from the present study demonstrated that BRBs reversed multiple pathways involved in the development of NMBA-induced preneoplastic esophagi in rats. In particular, BRBs significantly regulated expression levels of 10 genes involved in the pathway of inflammatory response such as *CCL2*, *S100A8*, and *IL19*. These results suggest that inflammatory pathway plays an important role in the development of NMBA-induced rat esophageal preneoplasia, and BRBs induce strong anti-inflammation effects. Further studies are needed to investigate the role of genes in other pathways in NMBA-induced rat esophageal tumors and to confirm their roles in human ESCC. Collectively, the nutrigenetic approach of our study is important because all the genes together can serve as the surrogate markers for early diagnosis of ESCC and determination of chemopreventive efficacy using dietary approaches.

#### Competing interests

No potential competing interest was disclosed.

#### Funding

We are grateful for financial support from NIH grants R01 CA103180 (to G. Stoner) and R01 CA148818 (to L-S. Wang).

#### Authors' contribution

Study design and acquisition, analysis, and interpretation of data: Pan Pan, Alan A. Dombkowski, Gary D. Stoner, Li-Shu Wang.

Manuscript writing and revising: Pan Pan and Li-Shu Wang.

Final approval: Pan Pan, Li-Shu Wang, and Gary Stoner.



## Supplementary material

The supplementary material is available in the electronic version of this article: <http://dx.doi.org/10.3233/JBR-180346>.

## References

- [1] Ferlay J, Soerjomataram I, Ervik M, Dikshit R, Eser S, Mathers C, et al. GLOBOCAN 2012 v1. 0, Cancer Incidence and Mortality Worldwide: IARC Cancer Base No. 11. 2014. Available from: [Globocan iarc fr](http://globocan.iarc.fr). 2012. doi.
- [2] Arnold M, Soerjomataram I, Ferlay J, Forman D. Global incidence of oesophageal cancer by histological subtype in 2012. *Gut*. 2015;64(3):381-7. doi: 10.1136/gutjnl-2014-308124
- [3] Abnet CC, Arnold M, Wei WQ. Epidemiology of Esophageal Squamous Cell Carcinoma. *Gastroenterology*. 2018;154(2):360-73. doi: 10.1053/j.gastro.2017.08.023
- [4] Pan P, Yu J, Wang LS. Colon Cancer: What We Eat. *Surg Oncol Clin N Am*. 2018;27(2):243-67. doi: 10.1016/j.soc.2017.11.002
- [5] Wiseman M. The second World Cancer Research Fund/American Institute for Cancer Research expert report. Food, nutrition, physical activity, and the prevention of cancer: A global perspective. *Proc Nutr Soc*. 2008;67(3):253-6. doi: 10.1017/S002966510800712X
- [6] Vingeliene S, Chan DSM, Vieira AR, Polemiti E, Stevens C, Abar L, et al. An update of the WCRF/AICR systematic literature review and meta-analysis on dietary and anthropometric factors and esophageal cancer risk. *Ann Oncol*. 2017;28(10):2409-19. doi: 10.1093/annonc/mdx338
- [7] Jayedi A, Emadi A, Shab-Bidar S. Dietary Inflammatory Index and Site-Specific Cancer Risk: A Systematic Review and Dose-Response Meta-Analysis. *Adv Nutr*. 2018;9(4):388-403. doi: 10.1093/advances/nmy015
- [8] Abe M, Shivappa N, Ito H, Oze I, Abe T, Shimizu Y, et al. Dietary inflammatory index and risk of upper aerodigestive tract cancer in Japanese adults. *Oncotarget*. 2018;9(35):24028-40. doi: 10.18632/oncotarget.25288
- [9] Tang L, Shivappa N, Hebert JR, Lee AH, Xu F, Binns CW. Dietary inflammatory index and risk of oesophageal cancer in Xinjiang Uyghur Autonomous Region, China. *Br J Nutr*. 2018;119(9):1068-75. doi: 10.1017/S0007114518000405
- [10] Shivappa N, Hebert JR, Anderson LA, Shrubsole MJ, Murray LJ, Getty LB, et al. Dietary inflammatory index and risk of reflux oesophagitis, Barrett's oesophagus and oesophageal adenocarcinoma: A population-based case-control study. *Br J Nutr*. 2017;117(9):1323-31. doi: 10.1017/S0007114517001131
- [11] Shivappa N, Zucchetto A, Serraino D, Rossi M, La Vecchia C, Hebert JR. Dietary inflammatory index and risk of esophageal squamous cell cancer in a case-control study from Italy. *Cancer Causes Control*. 2015;26(10):1439-47. doi: 10.1007/s10552-015-0636-y
- [12] Lu Y, Shivappa N, Lin Y, Lagergren J, Hebert JR. Diet-related inflammation and oesophageal cancer by histological type: A nationwide case-control study in Sweden. *Eur J Nutr*. 2016;55(4):1683-94. doi: 10.1007/s00394-015-0987-x
- [13] Giampieri F, Forbes-Hernandez TY, Gasparrini M, Alvarez-Suarez JM, Afrin S, Bompadre S, et al. Strawberry as a health promoter: An evidence based review. *Food Funct*. 2015;6(5):1386-98. doi: 10.1039/c5fo00147a
- [14] Giampieri F, Alvarez-Suarez JM, Battino M. Strawberry and human health: Effects beyond antioxidant activity. *J Agric Food Chem*. 2014;62(18):3867-76. doi: 10.1021/jf405455n
- [15] Pan P, Skaer C, Yu J, Zhao H, Ren H, Oshima K, et al. Berries and other natural products in the pancreatic cancer chemoprevention in human clinical trials. *J Berry Res*. 2017;7(3):147-61. doi: 10.3233/JBR-170159
- [16] Wang LS, Arnold M, Huang YW, Sardo C, Seguin C, Martin E, et al. Modulation of genetic and epigenetic biomarkers of colorectal cancer in humans by black raspberries: A phase I pilot study. *Clin Cancer Res*. 2011;17(3):598-610. doi: 10.1158/1078-0432.CCR-10-1260
- [17] Pan P, Skaer CW, Stirdivant SM, Young MR, Stoner GD, Lechner JF, et al. Beneficial Regulation of Metabolic Profiles by Black Raspberries in Human Colorectal Cancer Patients. *Cancer Prev Res (Phila)*. 2015;8(8):743-50. doi: 10.1158/1940-6207.CAPR-15-0065
- [18] Pan P, Skaer CW, Wang HT, Stirdivant SM, Young MR, Oshima K, et al. Black raspberries suppress colonic adenoma development in ApcMin/+ mice: Relation to metabolite profiles. *Carcinogenesis*. 2015;36(10):1245-53. doi: 10.1093/carcin/bgv117
- [19] Pan P, C WS, Wang HT, Oshima K, Huang YW, Yu J, et al. Loss of free fatty acid receptor 2 enhances colonic adenoma development and reduces the chemopreventive effects of black raspberries in ApcMin/+ mice. *Carcinogenesis*. 2017;38(1):86-93. doi: 10.1093/carcin/bgw122
- [20] Pan P, Skaer CW, Wang HT, Kreiser MA, Stirdivant SM, Oshima K, et al. Systemic Metabolite Changes in Wild-type C57BL/6 Mice Fed Black Raspberries. *Nutr Cancer*. 2017;69(2):299-306. doi: 10.1080/01635581.2017.1263748

- [21] Pan P, Kang S, Wang Y, Liu K, Oshima K, Huang Y-W, et al. Black Raspberries Enhance Natural Killer Cell Infiltration into the Colon and Suppress the Progression of Colorectal Cancer. *Frontiers in Immunology*. 2017;8(997). doi: 10.3389/fimmu.2017.00997
- [22] Wang LS, Burke CA, Hasson H, Kuo CT, Molmenti CL, Seguin C, et al. A phase Ib study of the effects of black raspberries on rectal polyps in patients with familial adenomatous polyposis. *Cancer Prev Res (Phila)*. 2014;7(7):666-74. doi: 10.1158/1940-6207.CAPR-14-0052
- [23] Pan P, Lam V, Salzman N, Huang YW, Yu J, Zhang J, et al. Black Raspberries and Their Anthocyanin and Fiber Fractions Alter the Composition and Diversity of Gut Microbiota in F-344 Rats. *Nutr Cancer*. 2017;1-9. doi: 10.1080/01635581.2017.1340491
- [24] Pan P, Huang YW, Oshima K, Yearsley M, Zhang J, Yu J, et al. Could Aspirin and Diets High in Fiber Act Synergistically to Reduce the Risk of Colon Cancer in Humans? *Int J Mol Sci*. 2018;19(1). doi: 10.3390/ijms19010166
- [25] Pan P, Oshima K, Huang YW, Agle KA, Drobyski WR, Chen X, et al. Loss of FFAR2 promotes colon cancer by epigenetic dysregulation of inflammation suppressors. *Int J Cancer*. 2018. doi: 10.1002/ijc.31366
- [26] Pan P, Peiffer DS, Huang YW, Oshima K, Stoner GD, Wang LS. Inhibition of the development of N-nitrosomethylbenzylamine-induced esophageal tumors in rats by strawberries and aspirin, alone and in combination. *J Berry Res*. 2018;8(2):137-46. doi: 10.3233/JBR-170291
- [27] Stoner GD, Wang LS, Zikri N, Chen T, Hecht SS, Huang C, et al. Cancer prevention with freeze-dried berries and berry components. *Semin Cancer Biol*. 2007;17(5):403-10. doi: 10.1016/j.semcancer.2007.05.001
- [28] Stoner GD, Wang LS, Casto BC. Laboratory and clinical studies of cancer chemoprevention by antioxidants in berries. *Carcinogenesis*. 2008;29(9):1665-74. doi: 10.1093/carcin/bgn142
- [29] Stoner GD, Chen T, Kresty LA, Aziz RM, Reinemann T, Nines R. Protection against esophageal cancer in rodents with lyophilized berries: Potential mechanisms. *Nutr Cancer*. 2006;54(1):33-46. doi: 10.1207/s15327914nc5401\_5
- [30] Stoner GD, Wang LS, Chen T. Chemoprevention of esophageal squamous cell carcinoma. *Toxicol Appl Pharmacol*. 2007;224(3):337-49. doi: 10.1016/j.taap.2007.01.030
- [31] Lechner JF, Reen RK, Dombkowski AA, Cukovic D, Salagrama S, Wang LS, et al. Effects of a black raspberry diet on gene expression in the rat esophagus. *Nutr Cancer*. 2008;60(Suppl 1):61-9. doi: 10.1080/01635580802393118
- [32] Reen RK, Nines R, Stoner GD. Modulation of N-nitrosomethylbenzylamine metabolism by black raspberries in the esophagus and liver of Fischer 344 rats. *Nutr Cancer*. 2006;54(1):47-57. doi: 10.1207/s15327914nc5401\_6
- [33] Stoner GD, Dombkowski AA, Reen RK, Cukovic D, Salagrama S, Wang LS, et al. Carcinogen-altered genes in rat esophagus positively modulated to normal levels of expression by both black raspberries and phenylethyl isothiocyanate. *Cancer Res*. 2008;68(15):6460-7. doi: 10.1158/0008-5472.CAN-08-0146
- [34] Zikri NN, Riedel KM, Wang LS, Lechner J, Schwartz SJ, Stoner GD. Black raspberry components inhibit proliferation, induce apoptosis, and modulate gene expression in rat esophageal epithelial cells. *Nutr Cancer*. 2009;61(6):816-26. doi: 10.1080/01635580903285148
- [35] Wang LS, Hecht SS, Carmella SG, Yu N, Larue B, Henry C, et al. Anthocyanins in black raspberries prevent esophageal tumors in rats. *Cancer Prev Res (Phila)*. 2009;2(1):84-93. doi: 10.1158/1940-6207.CAPR-08-0155
- [36] Stoner GD, Wang LS, Seguin C, Rocha C, Stoner K, Chiu S, et al. Multiple berry types prevent N-nitrosomethylbenzylamine-induced esophageal cancer in rats. *Pharmaceutical research*. 2010;27(6):1138-45. doi: 10.1007/s11095-010-0102-1
- [37] Peiffer DS, Zimmerman NP, Wang LS, Ransom BW, Carmella SG, Kuo CT, et al. Chemoprevention of esophageal cancer with black raspberries, their component anthocyanins, and a major anthocyanin metabolite, protocatechuic acid. *Cancer Prev Res (Phila)*. 2014;7(6):574-84. doi: 10.1158/1940-6207.CAPR-14-0003
- [38] Peiffer DS, Wang LS, Zimmerman NP, Ransom BW, Carmella SG, Kuo CT, et al. Dietary Consumption of Black Raspberries or Their Anthocyanin Constituents Alters Innate Immune Cell Trafficking in Esophageal Cancer. *Cancer Immunol Res*. 2016;4(1):72-82. doi: 10.1158/2326-6066.CIR-15-0091
- [39] Jakszyn P, Gonzalez CA. Nitrosamine and related food intake and gastric and oesophageal cancer risk: A systematic review of the epidemiological evidence. *World J Gastroenterol*. 2006;12(27):4296-303. doi: 10.1159/000443155
- [40] Yang CS, Chen X, Tu S. Etiology and Prevention of Esophageal Cancer. *Gastrointest Tumors*. 2016;3(1):3-16. doi: 10.1159/000443155
- [41] Huang YW, Gu F, Dombkowski A, Wang LS, Stoner GD. Black raspberries demethylate Sfrp4, a WNT pathway antagonist, in rat esophageal squamous cell papilloma. *Mol Carcinog*. 2016;55(11):1867-75. doi: 10.1002/mc.22435
- [42] Wang LS, Dombkowski AA, Seguin C, Rocha C, Cukovic D, Mukundan A, et al. Mechanistic basis for the chemopreventive effects of black raspberries at a late stage of rat esophageal carcinogenesis. *Mol Carcinog*. 2011;50(4):291-300. doi: 10.1002/mc.20634
- [43] Weng L, Dai H, Zhan Y, He Y, Stepaniants SB, Bassett DE. Rosetta error model for gene expression analysis. *Bioinformatics*. 2006;22(9):1111-21. doi: 10.1093/bioinformatics/btl045
- [44] Bianconi V, Sahebkar A, Atkin SL, Pirro M. The regulation and importance of monocyte chemoattractant protein-1. *Curr Opin Hematol*. 2018;25(1):44-51. doi: 10.1097/MOH.0000000000000389

- [45] Lu L, Weng C, Mao H, Fang X, Liu X, Wu Y, et al. IL-17A promotes migration and tumor killing capability of B cells in esophageal squamous cell carcinoma. *Oncotarget*. 2016;7(16):21853-64. doi: 10.18632/oncotarget.7869
- [46] Lu L, Pan K, Zheng HX, Li JJ, Qiu HJ, Zhao JJ, et al. IL-17A promotes immune cell recruitment in human esophageal cancers and the infiltrating dendritic cells represent a positive prognostic marker for patient survival. *Journal of immunotherapy (Hagerstown, Md : 1997)*. 2013;36(8):451-8. doi: 10.1097/CJI.0b013e3182a802cf
- [47] Chen D, Jiang R, Mao C, Shi L, Wang S, Yu L, et al. Chemokine/chemokine receptor interactions contribute to the accumulation of Th17 cells in patients with esophageal squamous cell carcinoma. *Hum Immunol*. 2012;73(11):1068-72. doi: 10.1016/j.humimm.2012.07.333
- [48] Ohta M, Kitadai Y, Tanaka S, Yoshihara M, Yasui W, Mukaida N, et al. Monocyte chemoattractant protein-1 expression correlates with macrophage infiltration and tumor vascularity in human esophageal squamous cell carcinomas. *Int J Cancer*. 2002;102(3):220-4. doi: 10.1002/ijc.10705
- [49] Koide N, Nishio A, Sato T, Sugiyama A, Miyagawa S. Significance of macrophage chemoattractant protein-1 expression and macrophage infiltration in squamous cell carcinoma of the esophagus. *Am J Gastroenterol*. 2004;99(9):1667-74. doi: 10.1111/j.1572-0241.2004.30733.x
- [50] Chen T, Rose ME, Hwang H, Nines RG, Stoner GD. Black raspberries inhibit N-nitrosomethylbenzylamine (NMBA)-induced angiogenesis in rat esophagus parallel to the suppression of COX-2 and iNOS. *Carcinogenesis*. 2006;27(11):2301-7. doi: 10.1093/carcin/bgl109
- [51] Wang S, Song R, Wang Z, Jing Z, Wang S, Ma J. S100A8/A9 in Inflammation. *Front Immunol*. 2018;9:1298. doi: 10.3389/fimmu.2018.01298
- [52] Ji J, Zhao L, Wang X, Zhou C, Ding F, Su L, et al. Differential expression of S100 gene family in human esophageal squamous cell carcinoma. *J Cancer Res Clin Oncol*. 2004;130(8):480-6. doi: 10.1007/s00432-004-0555-x
- [53] Luo A, Kong J, Hu G, Liew CC, Xiong M, Wang X, et al. Discovery of Ca<sup>2+</sup>-relevant and differentiation-associated genes downregulated in esophageal squamous cell carcinoma using cDNA microarray. *Oncogene*. 2004;23(6):1291-9. doi: 10.1038/sj.onc.1207218
- [54] Wang J, Cai Y, Xu H, Zhao J, Xu X, Han YL, et al. Expression of MRP14 gene is frequently down-regulated in Chinese human esophageal cancer. *Cell Res*. 2004;14(1):46-53. doi: 10.1038/sj.cr.7290201
- [55] Taccioli C, Wan SG, Liu CG, Alder H, Volinia S, Farber JL, et al. Zinc replenishment reverses overexpression of the proinflammatory mediator S100A8 and esophageal preneoplasia in the rat. *Gastroenterology*. 2009;136(3):953-66. doi: 10.1053/j.gastro.2008.11.039
- [56] Taccioli C, Chen H, Jiang Y, Liu XP, Huang K, Smalley KJ, et al. Dietary zinc deficiency fuels esophageal cancer development by inducing a distinct inflammatory signature. *Oncogene*. 2012;31(42):4550-8. doi: 10.1038/onc.2011.592
- [57] Ouyang W, Rutz S, Crellin NK, Valdez PA, Hymowitz SG. Regulation and functions of the IL-10 family of cytokines in inflammation and disease. *Annu Rev Immunol*. 2011;29:71-109. doi: 10.1146/annurev-immunol-031210-101312
- [58] Sabat R. IL-10 family of cytokines. *Cytokine Growth Factor Rev*. 2010;21(5):315-24. doi: 10.1016/j.cytogfr.2010.11.001
- [59] Fickenscher H, Hor S, Kupers H, Knappe A, Wittmann S, Sticht H. The interleukin-10 family of cytokines. *Trends Immunol*. 2002;23(2):89-96. doi: 10.1016/j.cytogfr.2010.08.005
- [60] Gallagher G. Interleukin-19: Multiple roles in immune regulation and disease. *Cytokine Growth Factor Rev*. 2010;21(5):345-52. doi: 10.1016/j.cytogfr.2010.08.005
- [61] Azuma YT, Nakajima H, Takeuchi T. IL-19 as a potential therapeutic in autoimmune and inflammatory diseases. *Current Pharmaceutical Design*. 2011;17(34):3776-80. doi: 10.1016/j.cytogfr.2010.08.005
- [62] Hsing CH, Kwok FA, Cheng HC, Li CF, Chang MS. Inhibiting interleukin-19 activity ameliorates esophageal squamous cell carcinoma progression. *PLoS One*. 2013;8(10):e75254. doi: 10.1371/journal.pone.0075254
- [63] Menezes ME, Bhatia S, Bhoopathi P, Das SK, Emdad L, Dasgupta S, et al. MDA-7/IL-24: Multifunctional cancer killing cytokine. *Adv Exp Med Biol*. 2014;818:127-53. doi: 10.1007/978-1-4471-6458-6\_6
- [64] Tong AW, Nemunaitis J, Su D, Zhang Y, Cunningham C, Senzer N, et al. Intratumoral injection of INGN 241, a nonreplicating adenovector expressing the melanoma-differentiation associated gene-7 (mda-7/IL24): Biologic outcome in advanced cancer patients. *Mol Ther*. 2005;11(1):160-72. doi: 10.1016/j.ymthe.2004.09.021
- [65] Li C, Xia G, Jianqing Z, Mei Y, Ge B, Li Z. Serum differential protein identification of Xinjiang Kazakh esophageal cancer patients based on the two-dimensional liquid-phase chromatography and LTQ MS. *Mol Biol Rep*. 2014;41(5):2893-905. doi: 10.1007/s11033-014-3145-2
- [66] Akashi E, Fujihara S, Morishita A, Tadokoro T, Chiyo T, Fujikawa K, et al. Effects of galectin-9 on apoptosis, cell cycle and autophagy in human esophageal adenocarcinoma cells. *Oncology Reports*. 2017;38(1):506-14. doi: 10.3892/or.2017.5689
- [67] Zhong L, Ge K, Zu JC, Zhao LH, Shen WK, Wang JF, et al. Autoantibodies as potential biomarkers for breast cancer. *Breast Cancer Res*. 2008;10(3):R40. doi: 10.1186/bcr2091

- [68] Wang LX, Li Y, Chen GZ. Network-based co-expression analysis for exploring the potential diagnostic biomarkers of metastatic melanoma. *PLoS One*. 2018;13(1):e0190447. doi: 10.1371/journal.pone.0190447
- [69] Ertem FU, Zhang W, Chang K, Mohaiza Dashwood W, Rajendran P, Sun D, et al. Oncogenic targets Mmp7, S100a9, Nppb and Aldh1a3 from transcriptome profiling of FAP and Pirc adenomas are downregulated in response to tumor suppression by Clotam. *Int J Cancer*. 2017;140(2):460-8. doi: 10.1002/ijc.30458
- [70] Shea DJ, Li YW, Stebe KJ, Konstantopoulos K. E-selectin-mediated rolling facilitates pancreatic cancer cell adhesion to hyaluronic acid. *FASEB J*. 2017;31(11):5078-86. doi: 10.1096/fj.201700331R