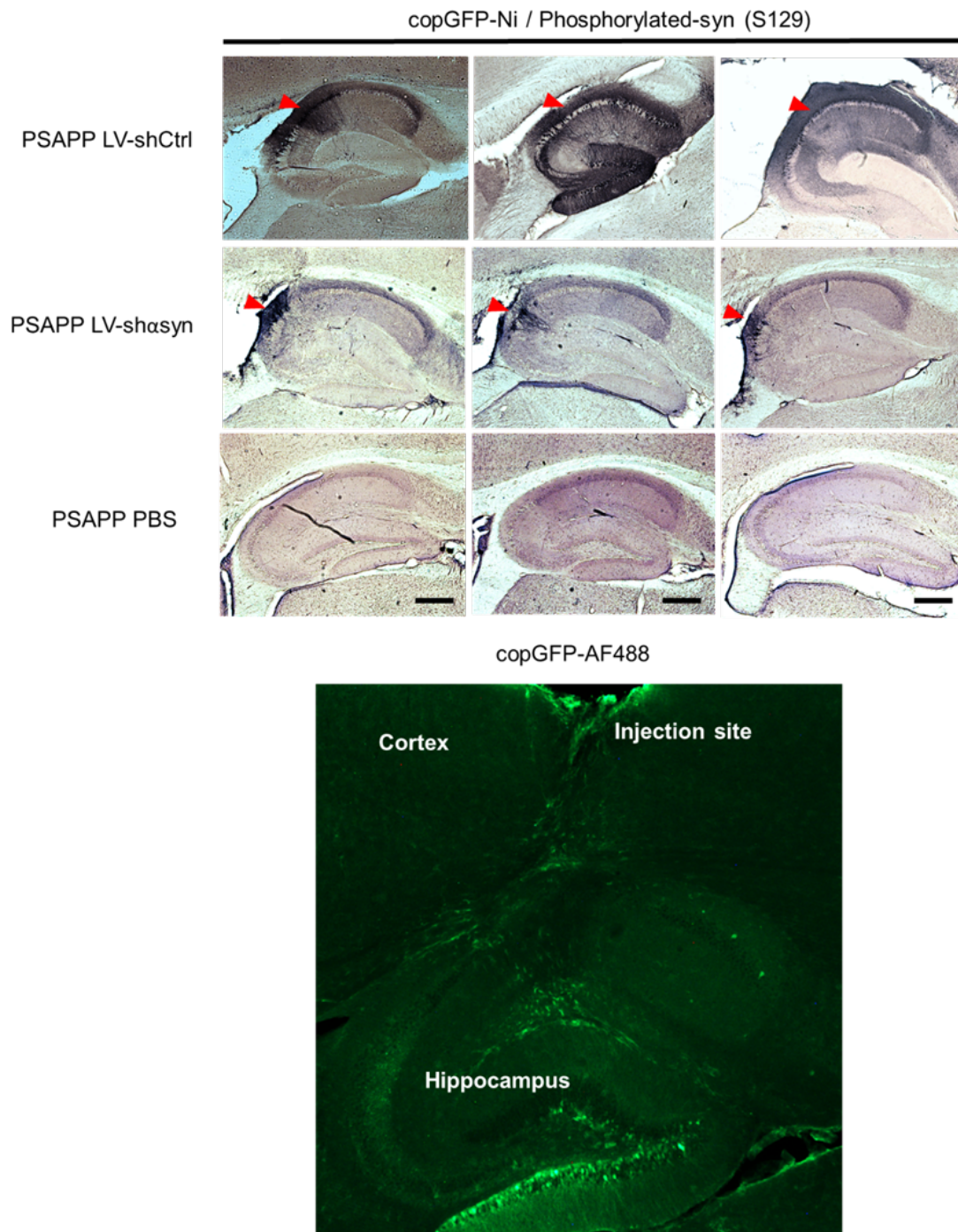


# Supplementary Material

## Hippocampal Reduction of $\alpha$ -Synuclein via RNA Interference Improves Neuropathology in Alzheimer's Disease Mice

**Supplementary Figure 1.** Immunohistochemistry against copGFP showing localization of LV-shRNA compounds to the hippocampus. Scale bars, 100  $\mu$ m.



**Supplementary Figure 2.** Testing immunoblots for A $\beta$  in APP-Tg mice. Three different antibodies were tested for different epitopes on brain homogenates: 4G8, 6E10, 82E1.

