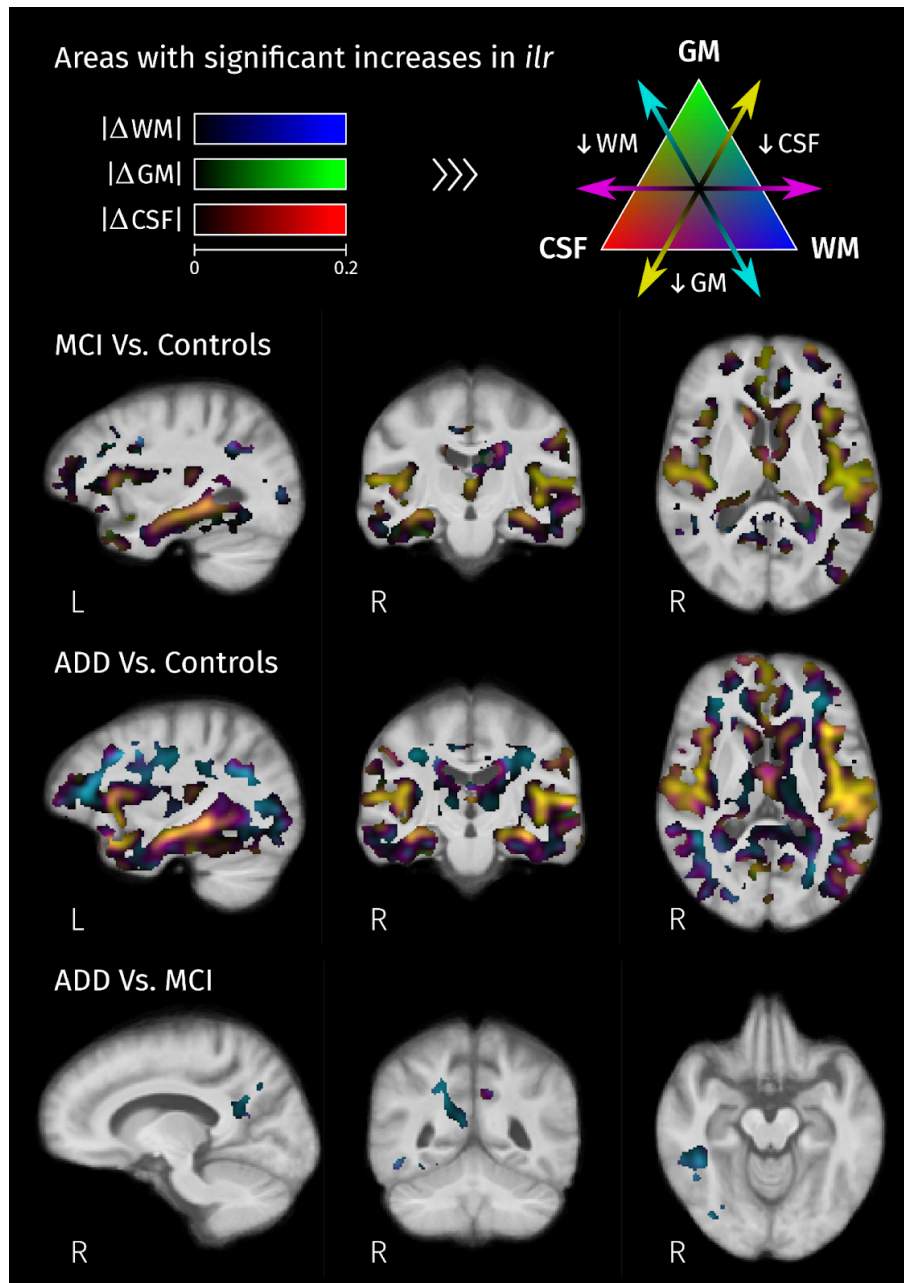


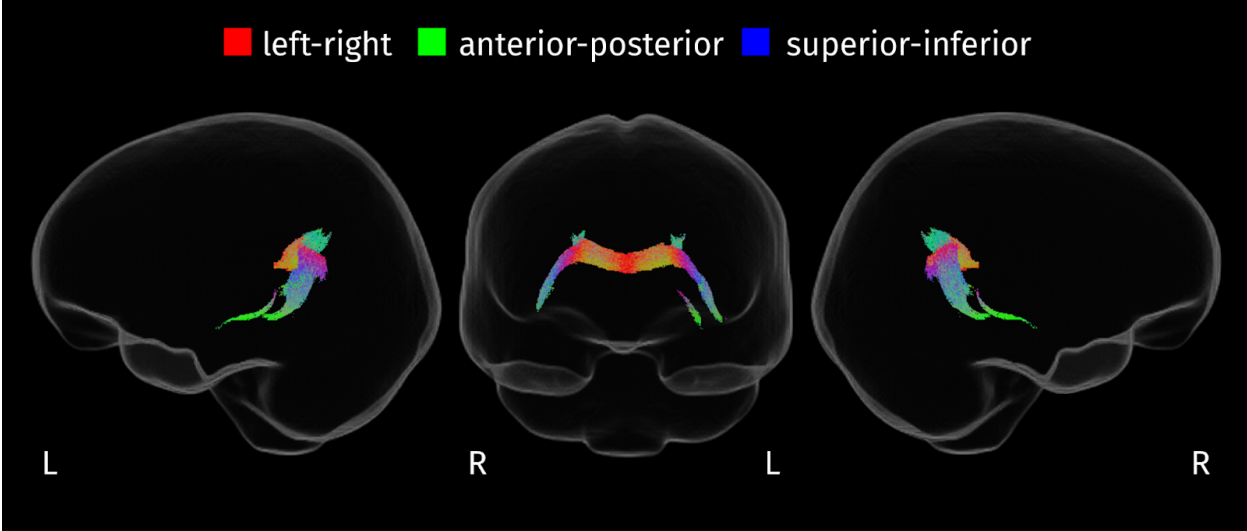
Supplementary Material

Investigating Tissue-Specific Abnormalities in Alzheimer's Disease with Multi-Shell Diffusion MRI

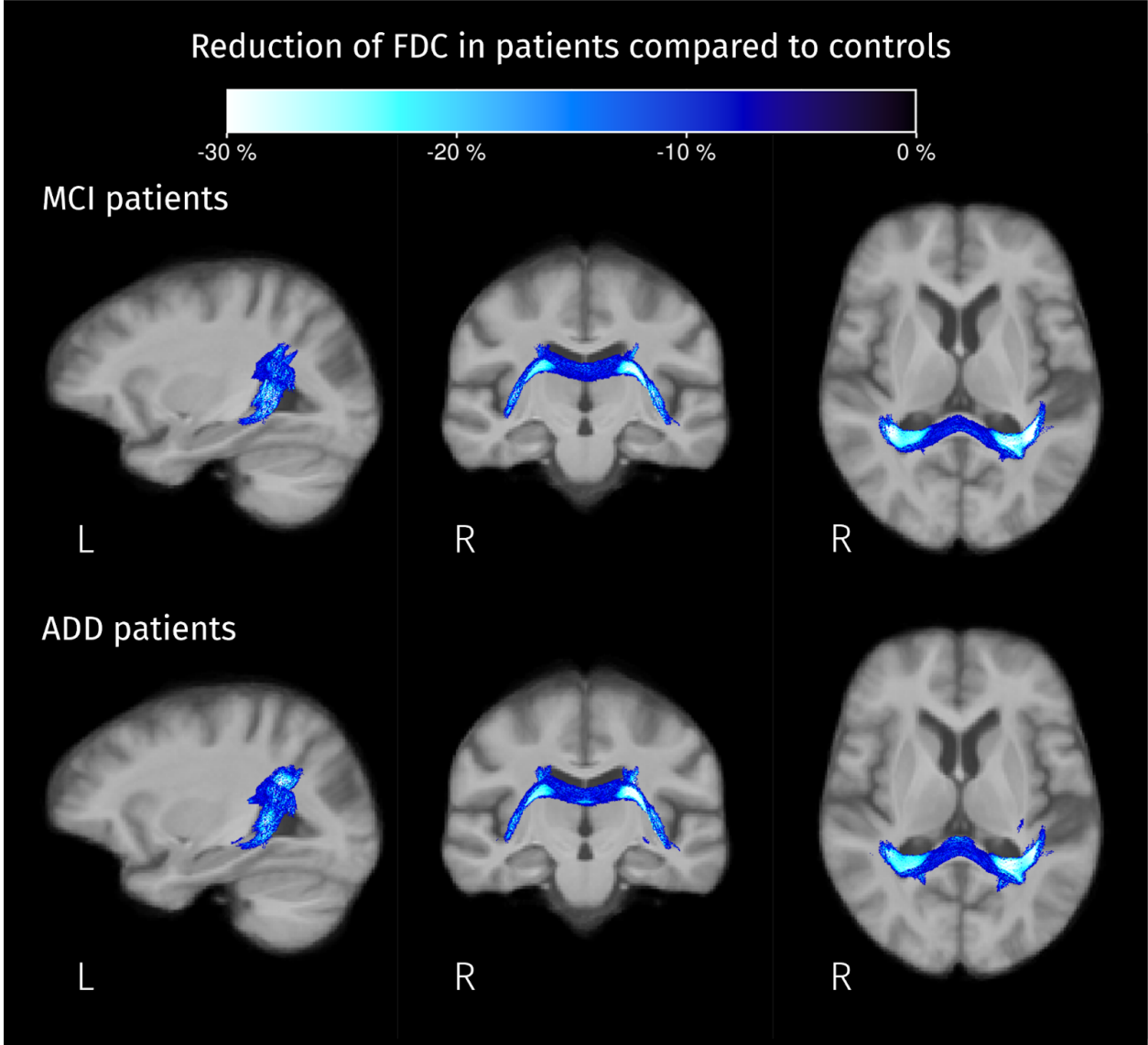
Supplementary Figure 1. Brain areas where at least one of isometric log-ratios is significantly greater (strong FWE-corrected $p < 0.05$) in patients than in controls, and in ADD patients compared to MCI. The absolute value of the difference between mean tissue-like fraction between groups is represented in a different color channel for each tissue type: red for CSF, green for GM, and blue for WM. The resulting color corresponds to the combination of change for multiple tissues.



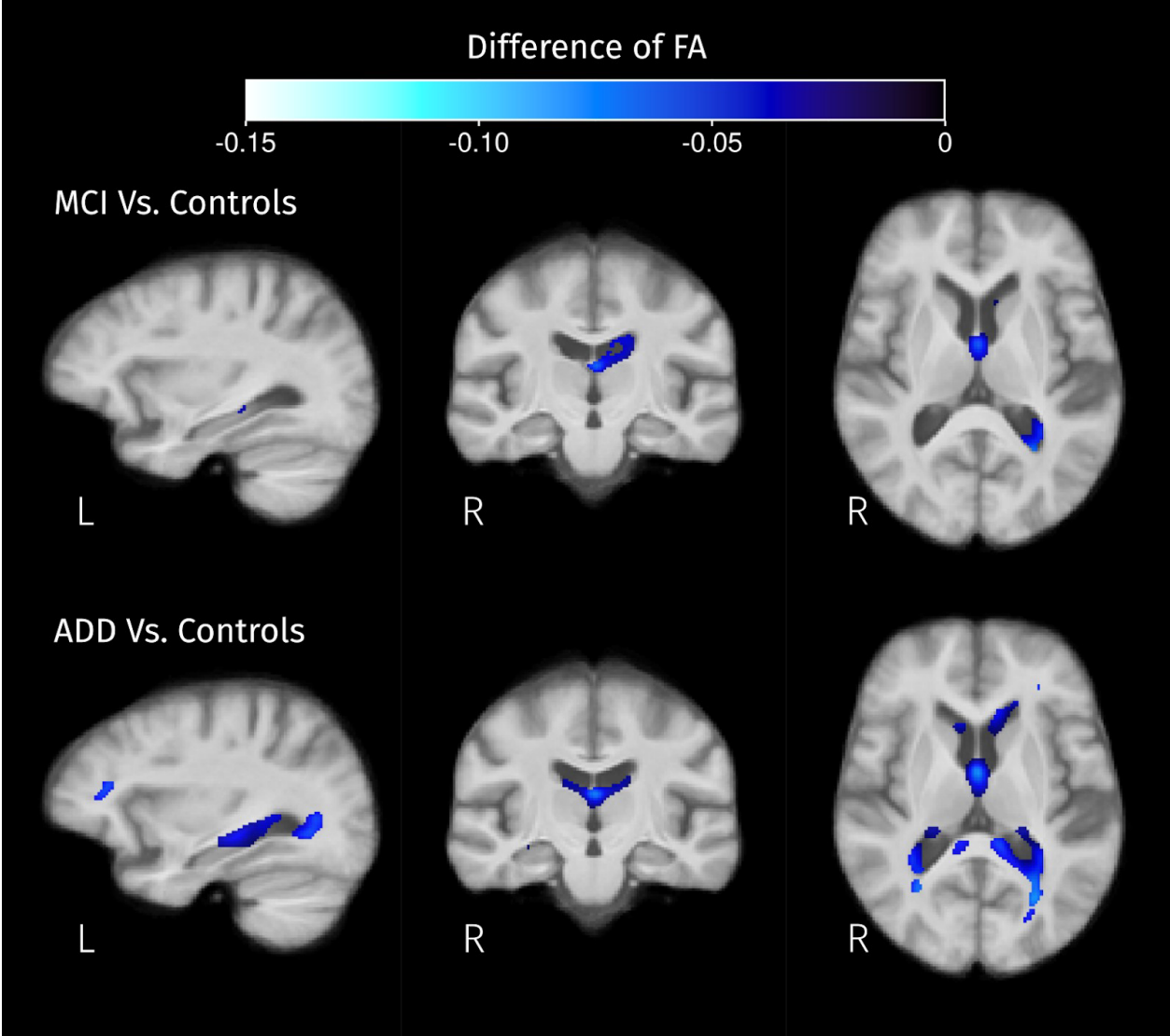
Supplementary Figure 2. Tracts where disease stage has a significant effect on FDC.



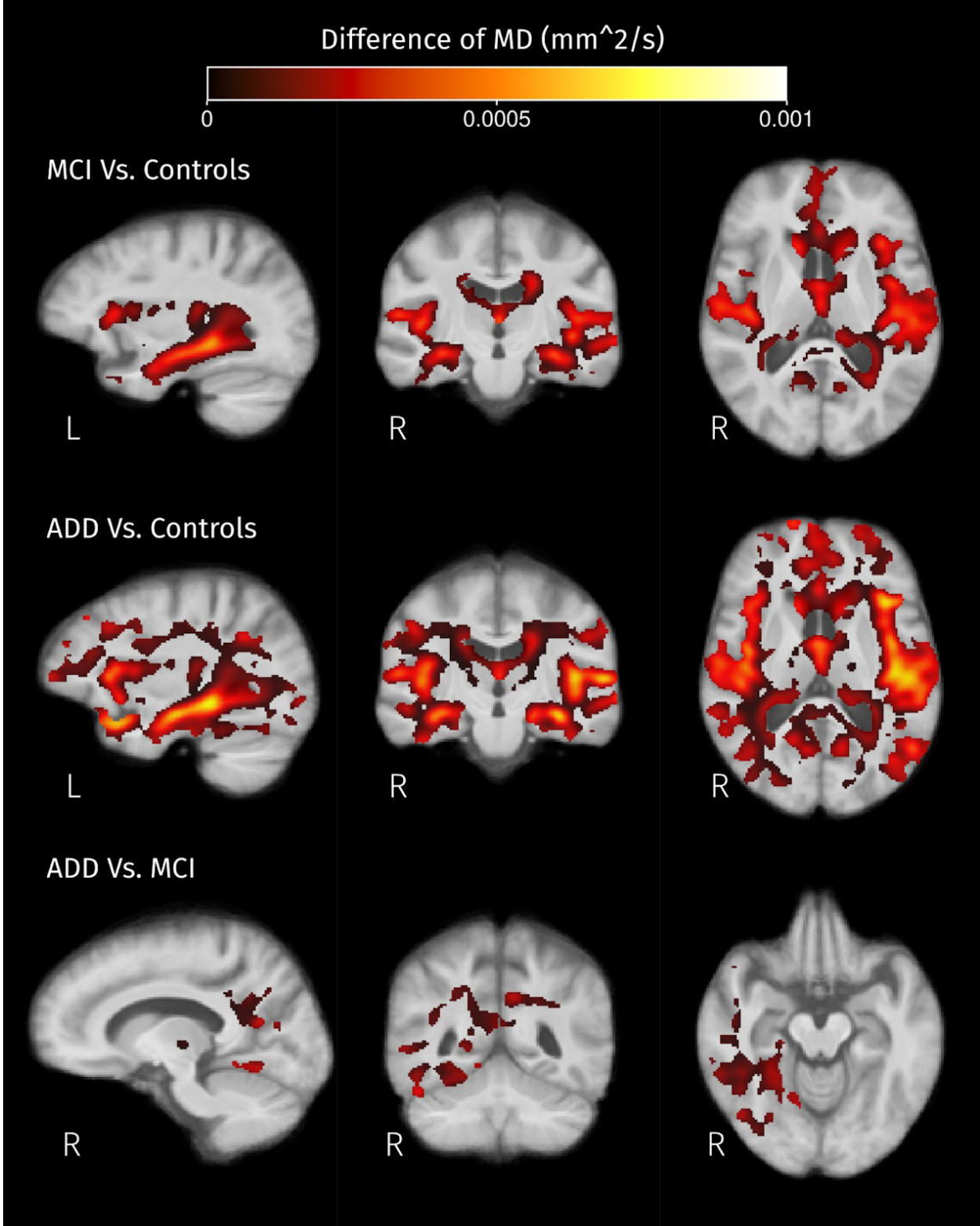
Supplementary Figure 3. Change of FDC in both groups of patients compared to the control group.



Supplementary Figure 4. Significant differences of fractional anisotropy (FA) for both groups of patients compared to the control group.



Supplementary Figure 5. Significant differences of mean diffusivity (MD) between pairs of groups.



Supplementary Figure 6. Significant differences of mean kurtosis (MK) for both groups of patients compared to the control group.

