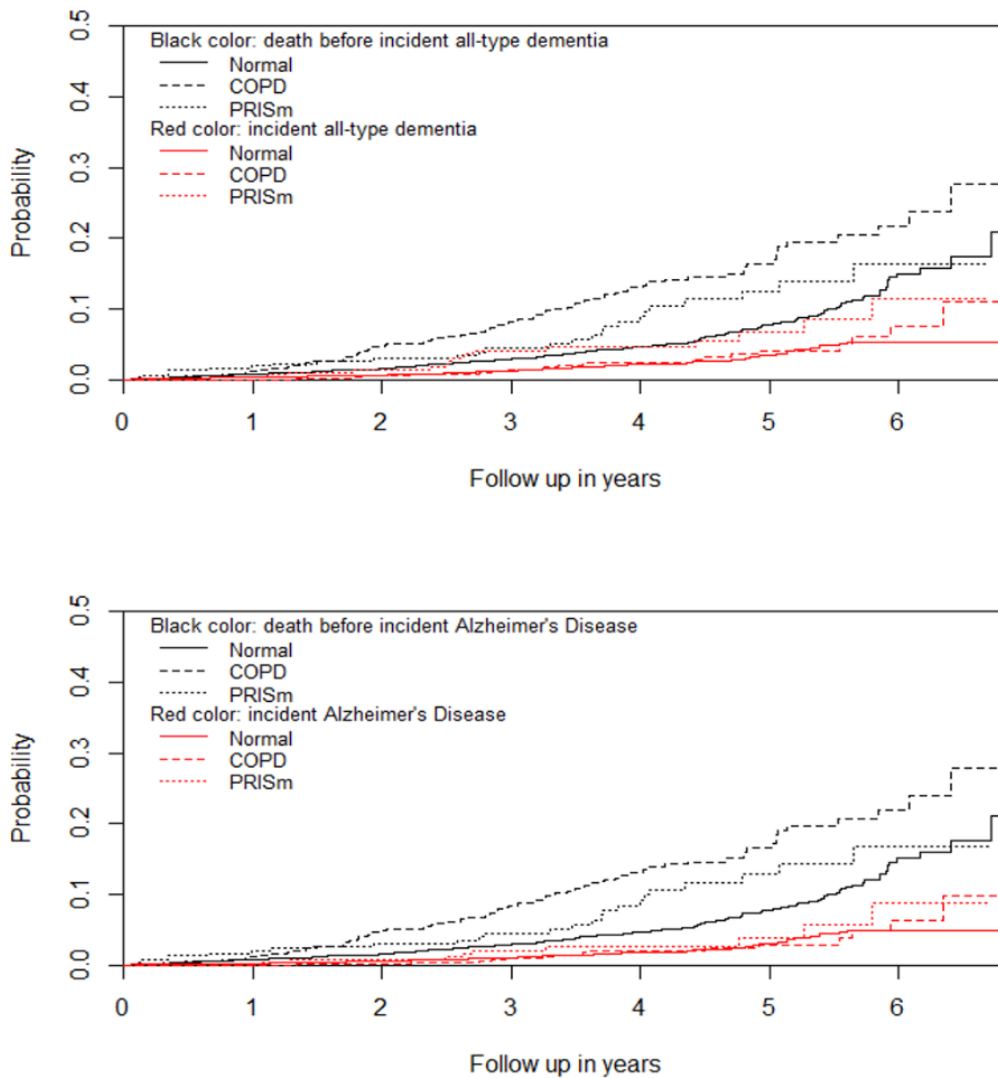


# Supplementary Material

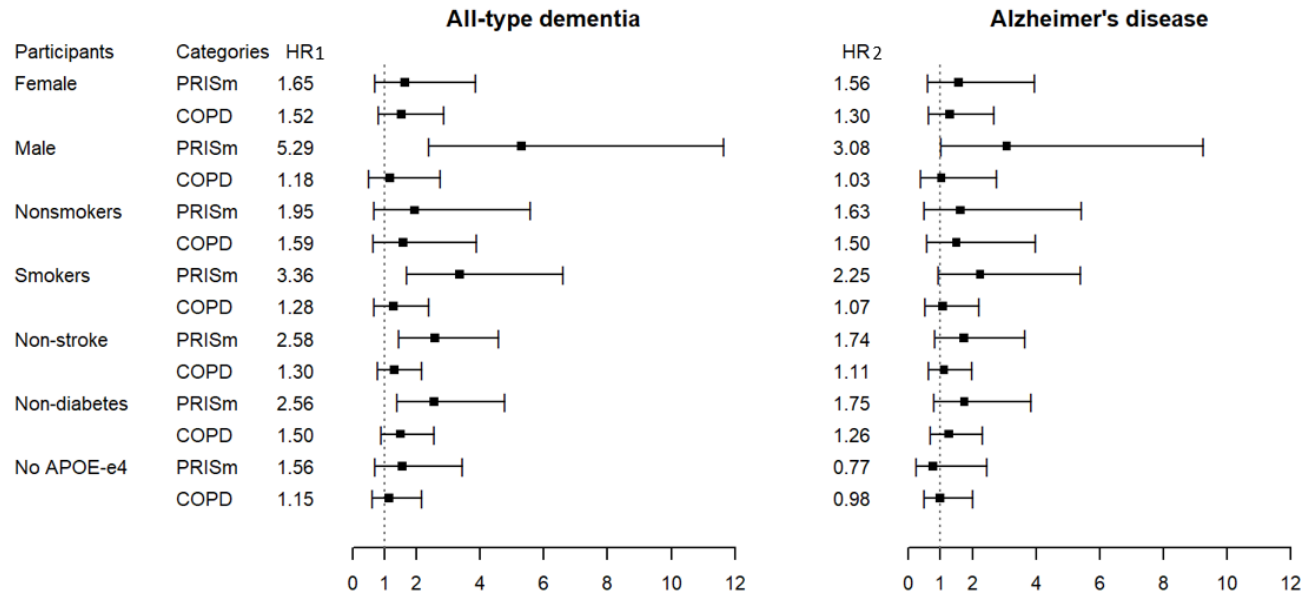
## Lung Function Impairment and the Risk of Incident Dementia: The Rotterdam Study

**Supplementary Figure 1.** Cumulative incidence curves for all-cause mortality and incident dementia according to lung function rank.



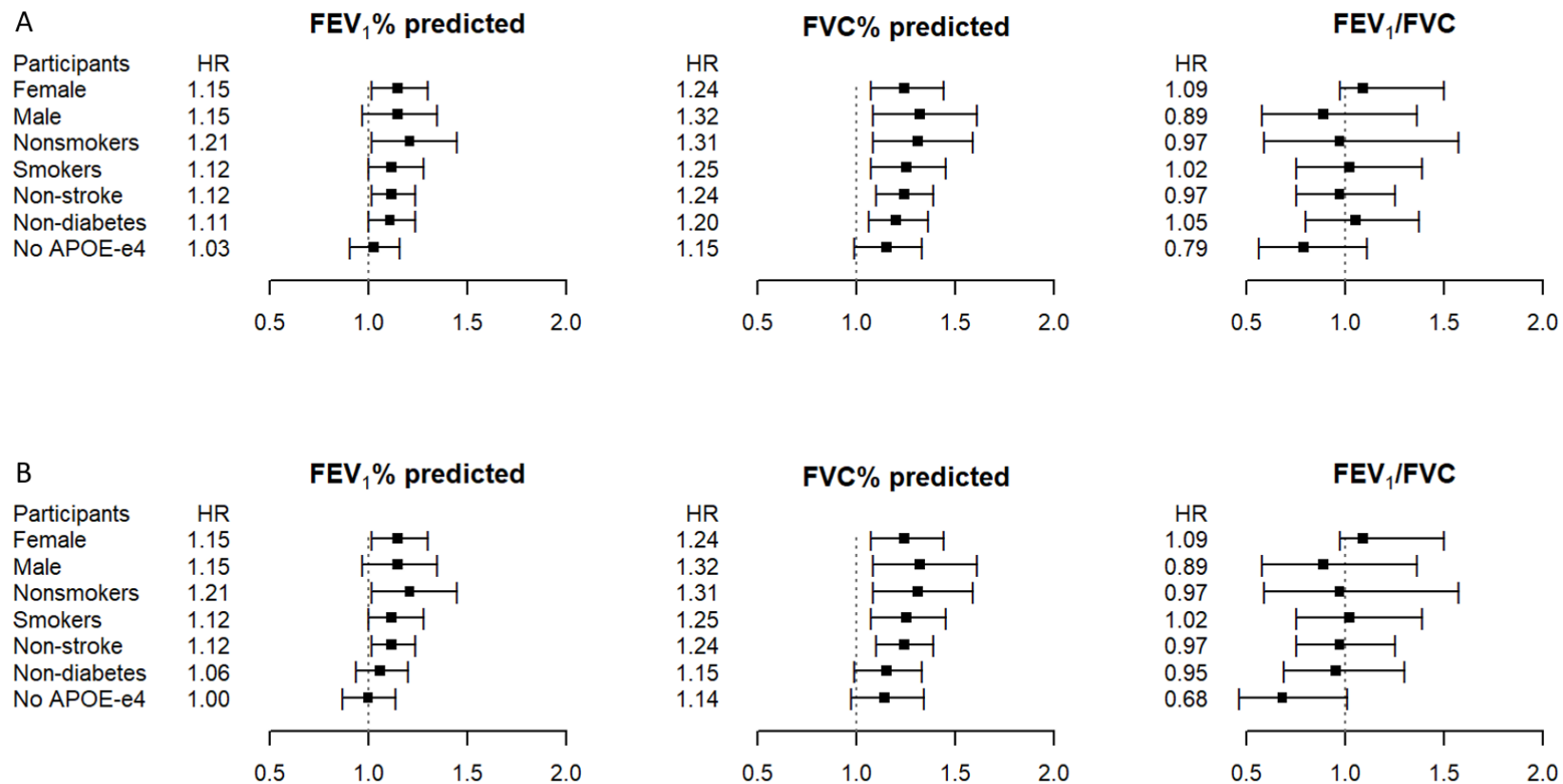
PRISm, preserved ratio impaired spirometry; COPD, chronic obstructive pulmonary disease; AD, Alzheimer's disease; \* follow-up time start after spirometry at phase.

**Supplementary Figure 2.** Lung function impairment and risk of incident dementia among specific types of population



HR, hazard ratio; PRISm, preserved ratio impaired spirometry; COPD, chronic obstructive pulmonary disease; Model, Cox regression adjusted for *APOE* genotype (except for stratified analyses among non-*APOE* ε4 carriers); Nonsmokers, participants without history of smoking; Smokers, former or current smokers; Non-stroke, participants without stroke; Participants with normal spirometry (hidden) were regarded as reference group.\* follow-up time start after spirometry at phase.

**Supplementary Figure 3.** Per 10% decline in different respiratory indexes and risk of incident dementia among specific types of population



HR, hazard ratio; A, All-type dementia; B, Alzheimer's disease; FEV<sub>1</sub>, forced expiratory volume in one second; FVC, forced vital capacity; Model, Cox regression adjusted for APOE category; Nonsmokers, participants without history of smoking; Smokers, former or current smokers; Non-stroke, participants without stroke; \* follow-up time start after spirometry at phase.