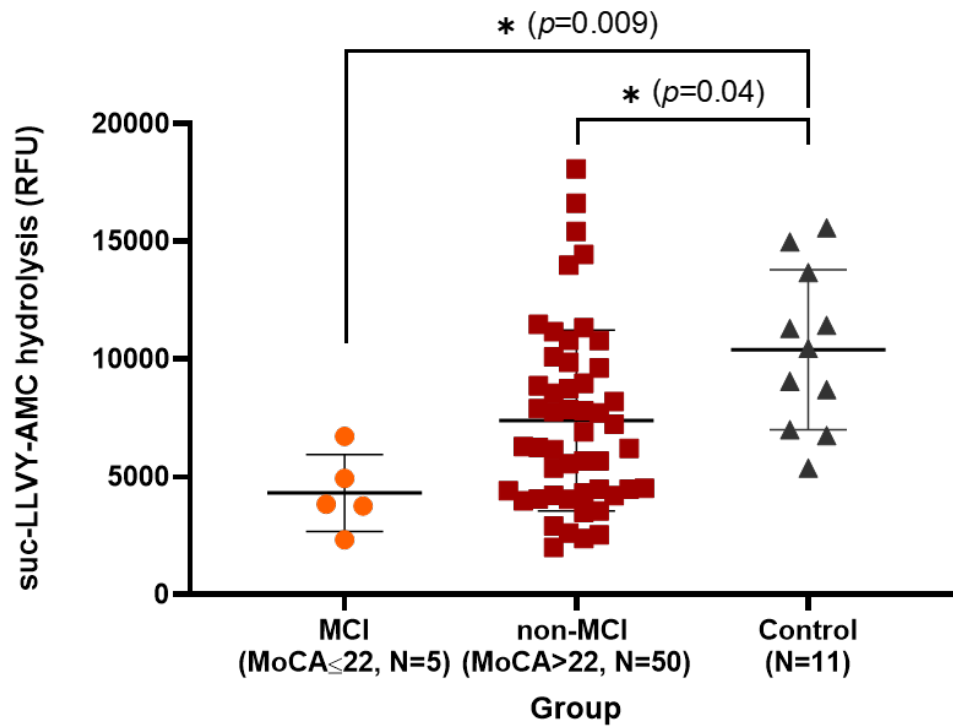
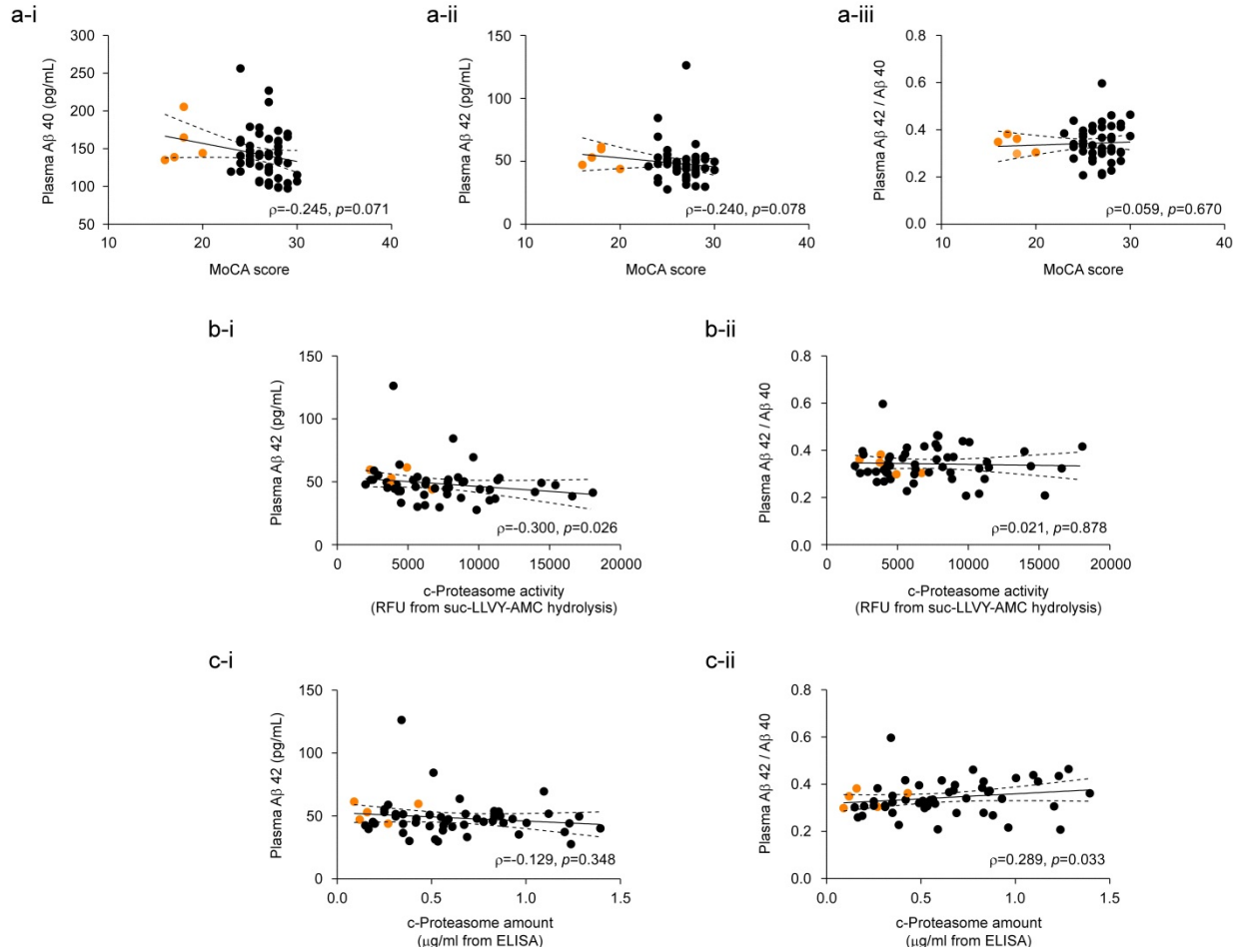


Supplementary Material

Proteasome Activity in the Plasma as a Novel Biomarker in Mild Cognitive Impairment with Chronic Tinnitus



Supplementary Figure 1. Comparison of c-proteasome between groups. Extracellular circulating proteasome (c-proteasome) activity of health subjects (Control group) was compared with that of mild cognitive impairment (MCI) and non-MCI groups. * $p < 0.05$ (by one-way ANOVA and post-hoc Tukey's test)



Supplementary Figure 2. Spearman’s correlation analysis among Aβ levels, MoCA score, c-proteasome concentrations, and c-proteasome activity. a) Correlation between Montreal cognitive assessment (MoCA) scores from patients with chronic tinnitus and Aβ₄₀ (i), Aβ₄₂ (ii), or Aβ_{42/40} ratio (iii). b) Correlation between c-proteasome activity and Aβ₄₂ (i) or Aβ_{42/40} ratio (ii). c) As in (b), except that c-proteasome levels were compared with that of Aβ, instead of c-proteasome activity. Solid and dashed lines represent the regression line and 95% confidence intervals, respectively. These data complement Figure 4.