

Supplementary Data

The Effects of Long-Term Omega-3 Fatty Acid Supplementation on Cognition and Alzheimer's Pathology in Animal Models of Alzheimer's Disease: A Systematic Review and Meta-Analysis

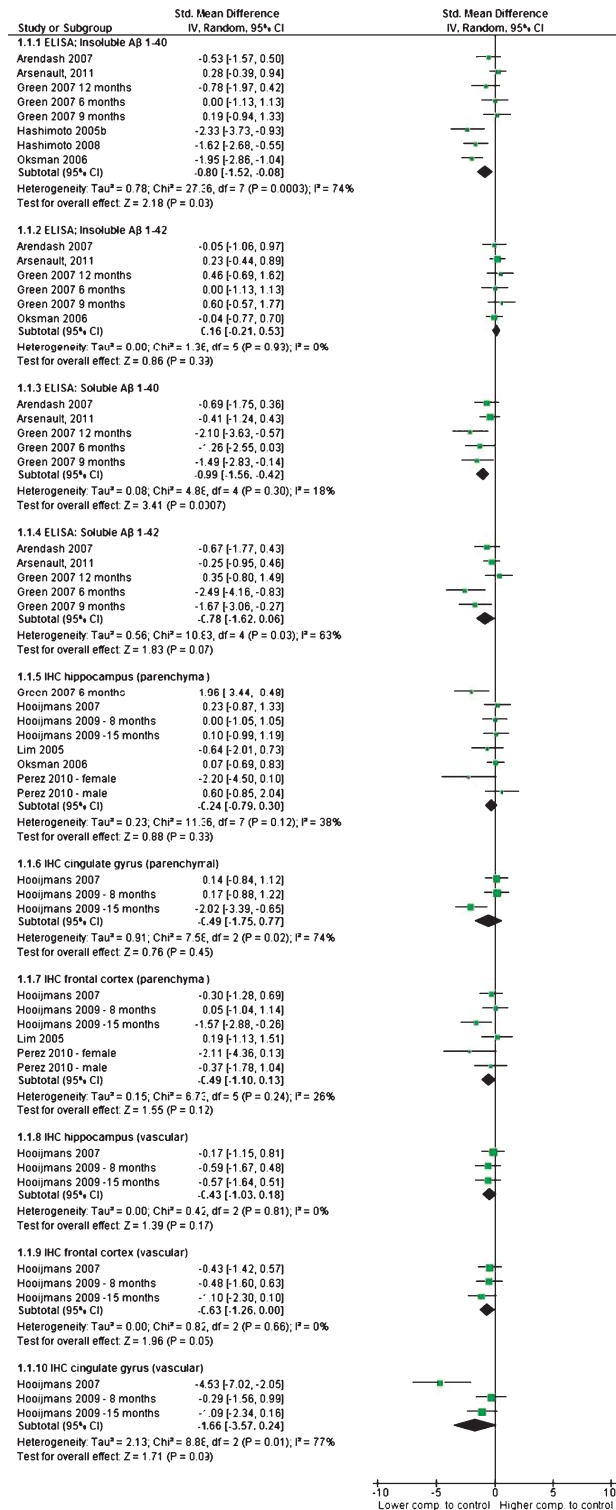
Carlijn R. Hooijmans^{a,*}, Pietermel C.M. Pasker-de Jong^b, Rob B.M. de Vries^a and Merel Ritskes-Hoitinga^a

^a*Radboud University Nijmegen Medical Centre, Central Animal Laboratory and 3R Research Centre, Nijmegen, The Netherlands*

^b*Radboud University Nijmegen Medical Centre, Department of Epidemiology, Biostatistics and HTA, Nijmegen, The Netherlands*

Accepted 26 August 2011

*Correspondence to: Carlijn R. Hooijmans, Radboud University Nijmegen Medical Centre, Central Animal Laboratory and 3R Research Centre, Geert Grooteplein Noord 29, Route 231, 6525 EZ Nijmegen, The Netherlands. Tel.: +0031 243668364; Fax: +0031 243616375; E-mail: C.Hooijmans@cdl.umcn.nl.

Supplementary Figure 1. Forest plot (effect size and 95% CI) of subgroups for amyloid- β deposition.