

## Supplementary Material

# Presenilin-1 Holoprotein is an Interacting Partner of Sarco Endoplasmic Reticulum Calcium-ATPase and Confers Resistance to Endoplasmic Reticulum Stress

Haifeng Jin<sup>a</sup>, Nobuo Sanjo<sup>a,\*</sup>, Toshiki Uchihara<sup>b</sup>, Kazuhiko Watabe<sup>c</sup>, Peter St. George-Hyslop<sup>d,e</sup>, Paul E. Fraser<sup>d</sup> and Hidehiro Mizusawa<sup>a</sup>

<sup>a</sup>*Department of Neurology and Neurological Science, Graduate School of Medical and Dental Science, Tokyo Medical and Dental University, Bunkyo-ku, Tokyo, Japan*

<sup>b</sup>*Department of Neurology, Tokyo Metropolitan Institute for Neuroscience, Fuchu, Tokyo, Japan*

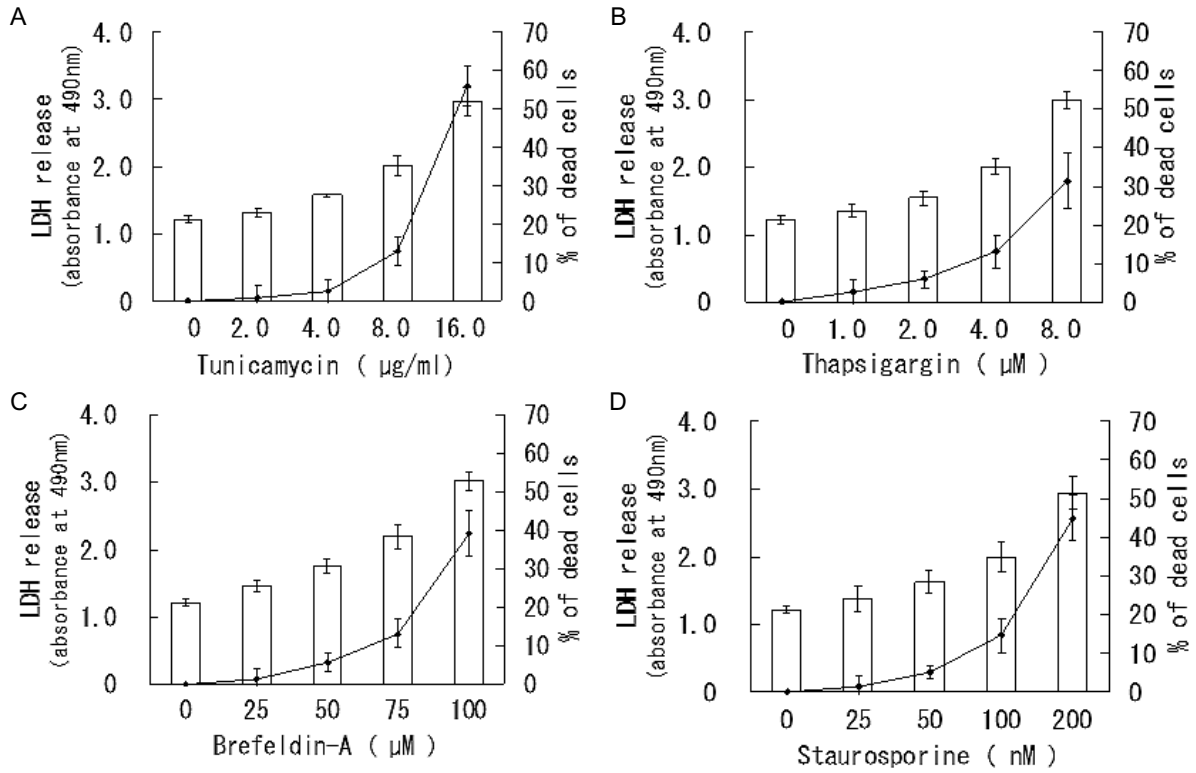
<sup>c</sup>*Molecular Neuropathology, Tokyo Metropolitan Institute for Neuroscience, Fuchu, Tokyo, Japan*

<sup>d</sup>*Centre for Research in Neurodegenerative Diseases, Departments of Medical Biophysics and Medicine (Neurology), University of Toronto, Toronto, Ontario, Canada*

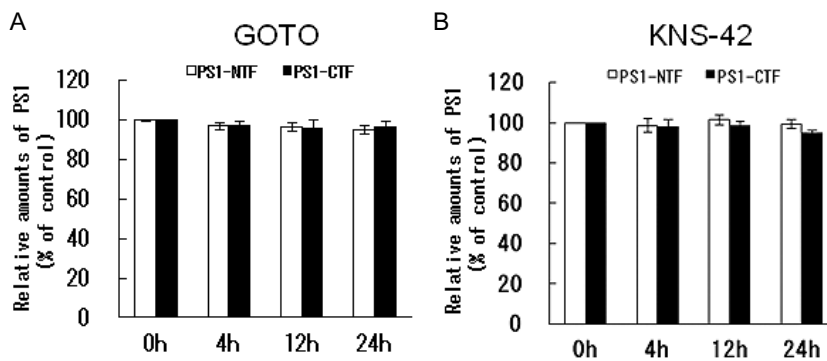
<sup>e</sup>*Department of Clinical Neuroscience, University of Cambridge, Cambridge, United Kingdom*

\*Correspondence to: Nobuo Sanjo, Department of Neuropathology and Neurological Science, Graduate School of Medical and Dental Science, Tokyo Medical and Dental University, 1-5-45 Yushima, Bunkyo-ku, Tokyo, 113-8519 Japan. Tel.: +81 3 5803 5234; Fax: +81 3 5803 0169; E-mail: n-sanjo.nuro@tmd.ac.jp.

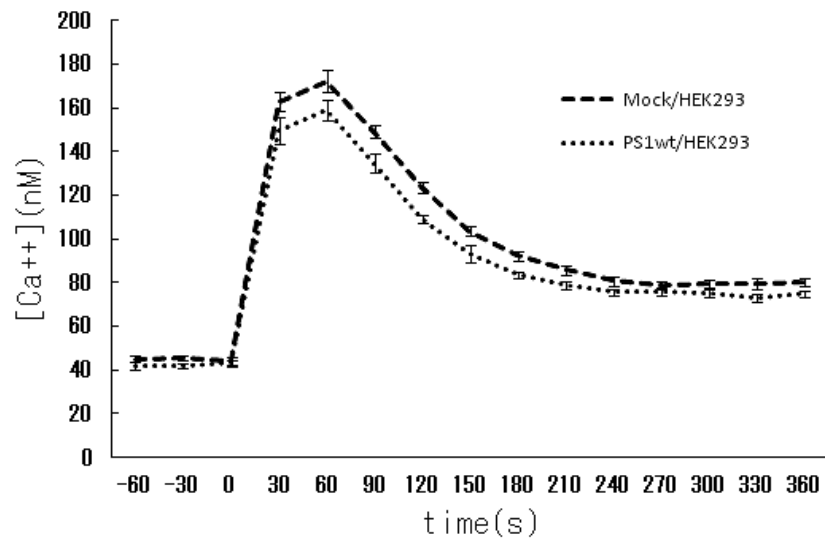
2

*H. Jin et al. / PSEN1-SERCA Complex Confers Resistance to ER Stress*

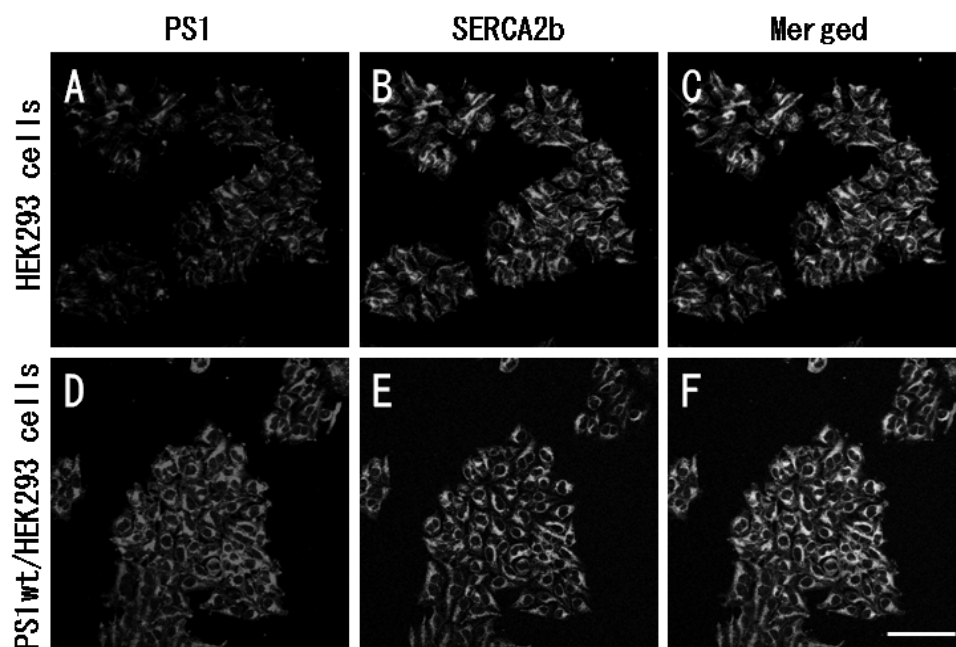
Supplementary Figure 1.



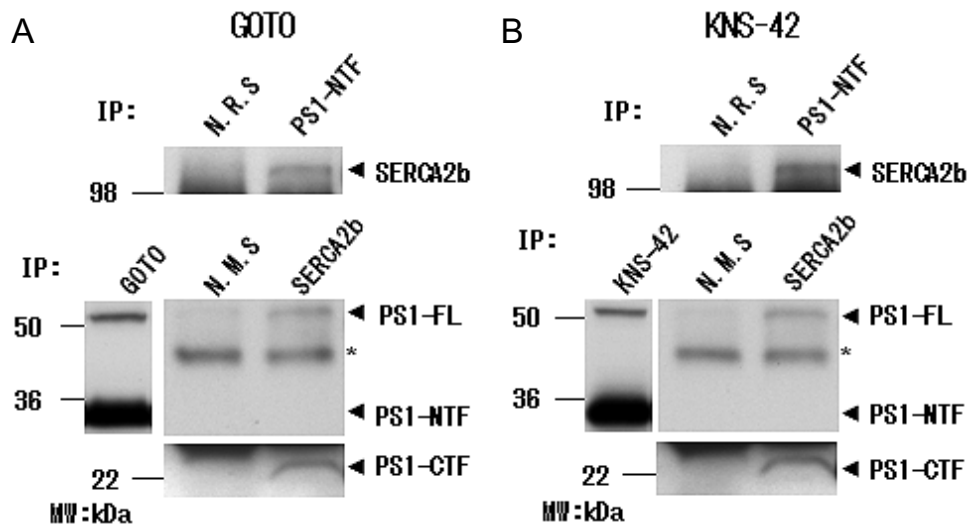
Supplementary Figure 2.



Supplementary Figure 3.



Supplementary Figure 4.



Supplementary Figure 5.

Supplementary Table 1  
Concentrations of chemical compounds for experiments

Compound	HEK293	GOTO	KNS-42
Tunicamycin	8 $\mu\text{g/ml}$	6 $\mu\text{g/ml}$	15 $\mu\text{g/ml}$
Thapsigargin	4 $\mu\text{M}$	4 $\mu\text{M}$	12.5 $\mu\text{M}$
Brefeldin-A	75 $\mu\text{M}$	25 $\mu\text{M}$	100 $\mu\text{M}$
Staurosporine	100 nM	100 nM	300 nM