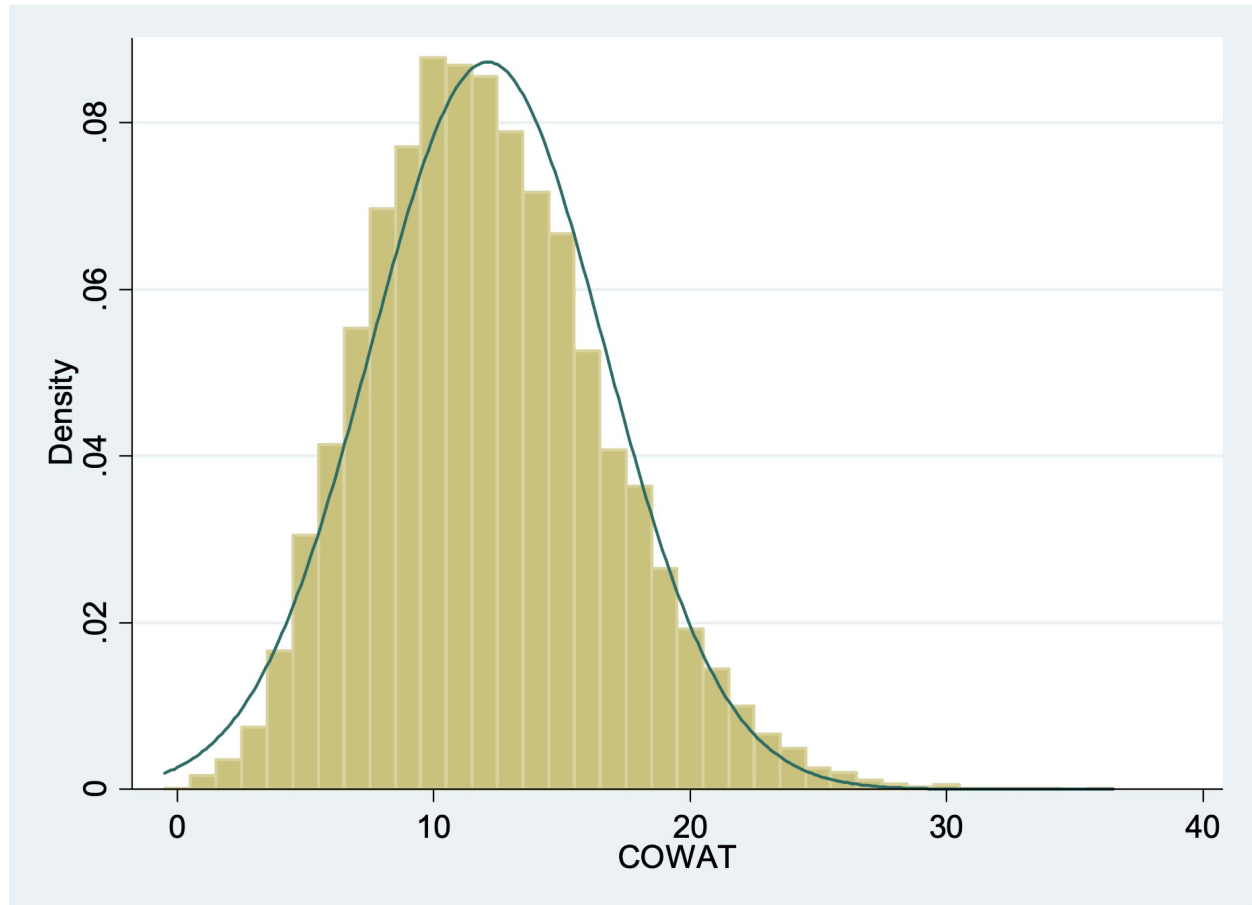
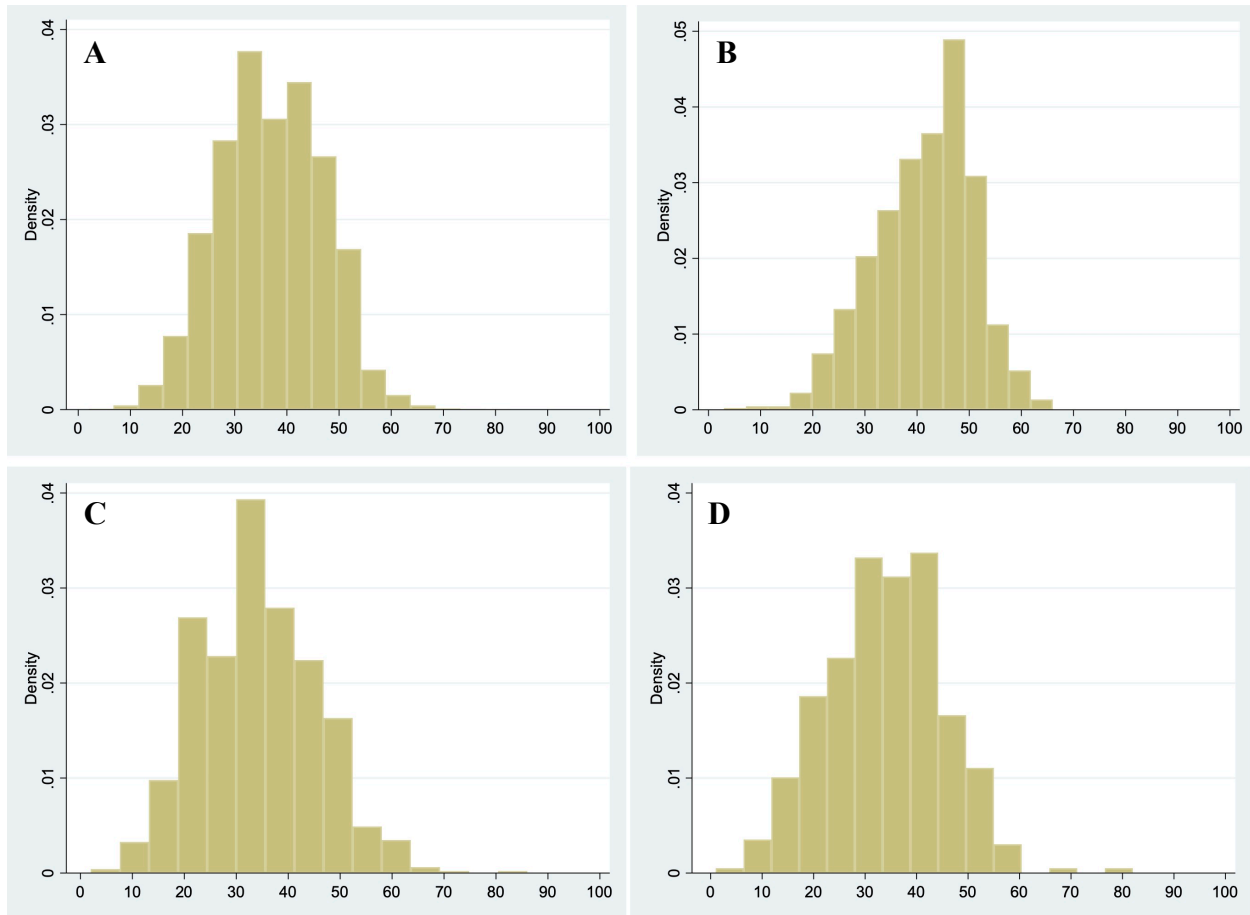


Supplementary Material

Normative Data for Single-Letter Controlled Oral Word Association Test in Older White Australians and Americans, African-Americans, and Hispanic/Latinos



Supplementary Figure 1. The distribution of total COWAT scores across all ASPREE participants included in this study (n=18,631).



Supplementary Figure 2. The distribution of COWAT scores across participants within each ethno-racial category. A) White Australians (n=16,335); B) White U.S. (n=1,084); C) African-American U.S. (n=896); D) Hispanic/Latino U.S. (n=316).

Supplementary Table 1. Linear regression models for the association between participant characteristics and Controlled Oral Word Association Test (COWAT) scores (n=18,631).

	β (S.E)	p
<u>Ethno-racial group</u>		
White Australians	Ref.	
White U.S.	-0.56 (0.14)	<0.0001
African-American U.S.	-1.83 (0.19)	<0.0001
Hispanic/Latino U.S.	-1.82 (0.28)	<0.0001
Male	Ref.	
Female	1.20 (0.07)	<0.0001
Age: 65-69 y	Ref.	
Age: 70-74 y	-0.27 (0.26)	0.29
Age: 75-79 y	-0.45 (0.26)	0.07
Age: 80+ y	-0.61 (0.27)	0.02
Education: <9	Ref.	
Education: 9-11 y	1.01 (0.10)	<0.0001
Education: 12 y	1.66 (0.13)	<0.0001
Education: 13-15 y	2.28 (0.12)	<0.0001
Education: 16+	3.39 (0.11)	<0.0001

Age and education level interaction is significant (p=0.0007).

Supplementary Table 2. Age, education, and gender specific reference values, mean (SD), in Australian Whites, excluding 217 individuals with an adjudicated dementia diagnosis within three years of baseline cognitive testing (n=16,118).

Age, y	Education <9 y		Education 9-11 y		Education 12 y		Education 13-15 y		Education ≥16 y	
	Male	Female	Male	Female	Male	Female	Male	Female	Male	Female
70-74	9.7 (3.9) n=658	11.0 (4.1) n=769	10.7 (4.2) n=1,313	12.1 (4.2) n=1,778	11.8 (4.4) n=442	12.9 (4.5) n=557	12.3 (4.6) n=668	13.6 (4.7) n=780	13.4 (4.8) n=1,248	14.6 (4.8) n=1,152
75-79	9.9 (4.1) n=347	10.9 (4.1) n=454	10.9 (4.4) n=589	12.2 (4.5) n=885	11.8 (4.4) n=195	12.6 (4.5) n=264	11.9 (4.7) n=248	12.8 (4.4) n=384	12.9 (4.2) n=447	14.2 (4.7) n=456
80+	9.8 (4.3) n=229	11.2 (4.2) n=329	11.1 (4.1) n=276	11.8 (4.5) n=513	10.9 (4.3) n=122	12.7 (4.4) n=167	11.3 (4.6) n=179	13.1 (4.7) n=201	12.2 (4.9) n=250	14.4 (5.1) n=218