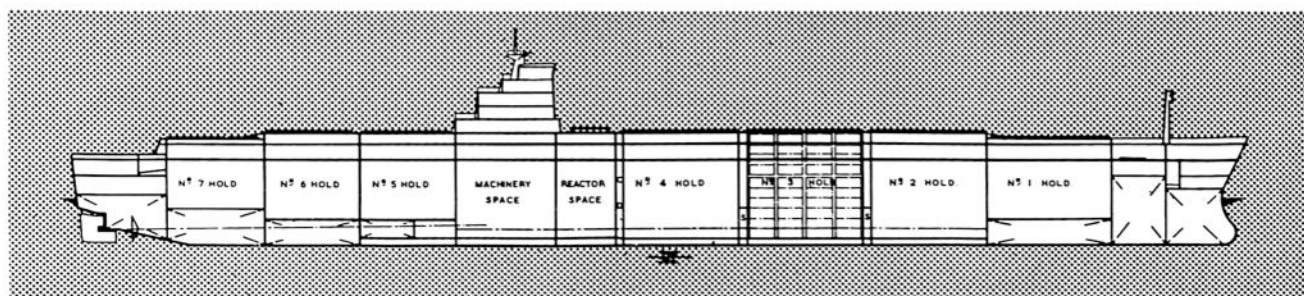
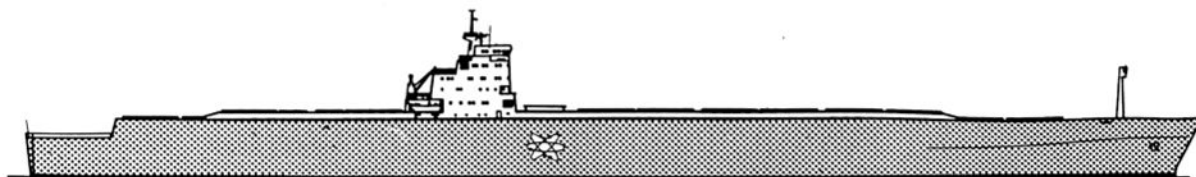


## ERRATUM

DESIGN FOR A NUCLEAR CONTAINER FLEET  
by P. W. E. Bird and G. D. Johnston.

Published Volume 17, July 1970, No. 191.



NUCLEAR POWERED CONTAINER SHIP  
1800 20' x 8' x 8' I.S.O. CONTAINERS  
850 0' LBP x 105 5' BEAM x 37 0' DRAUGHT