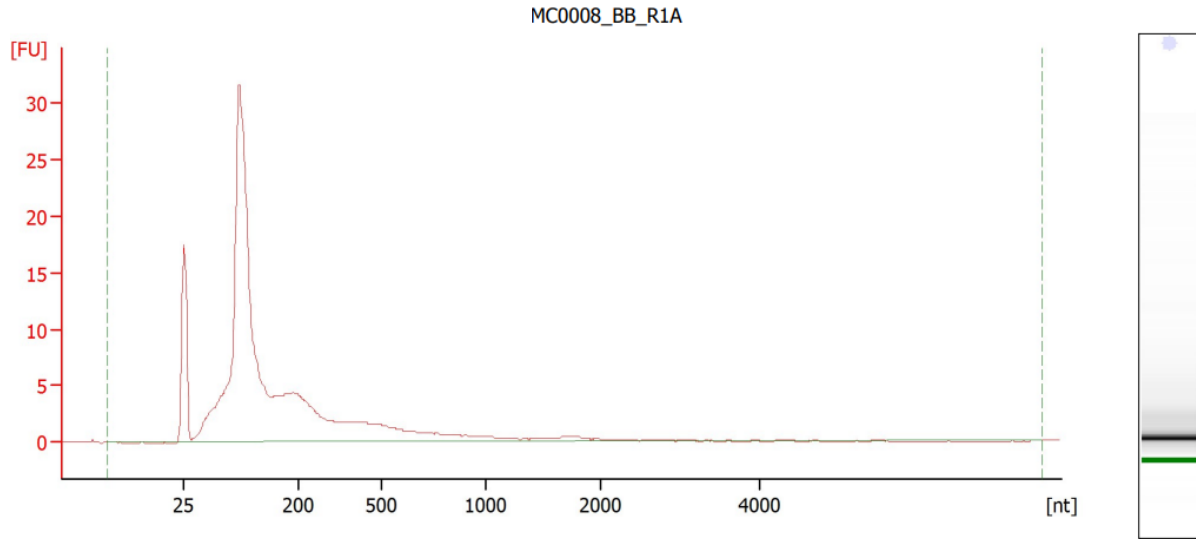


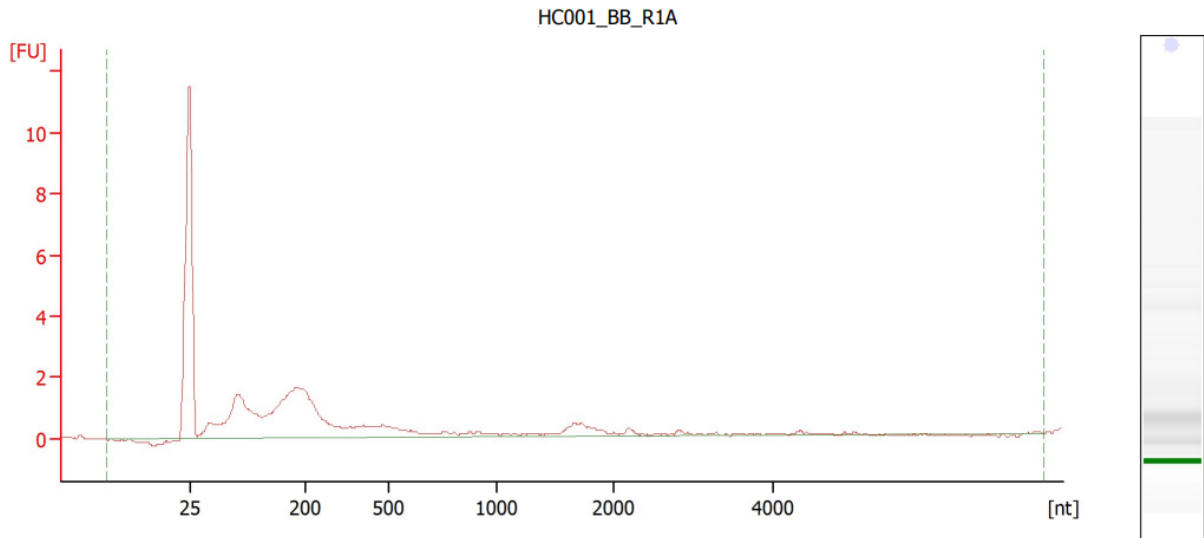
Supplementary Figure 1. Total RNA Electropherograms for Samples from Pancreas Cases and Controls Represented in this Pilot Study\*



**Overall Results**

**MC0008\_BB\_R1A**

RNA Area:	192.8	RNA Integrity Number (RIN):	2.4 (B.02.08)
RNA Concentration:	397 pg/ $\mu$ l	Result Flagging Color:	<span style="background-color: #ccccff; border: 1px solid black; display: inline-block; width: 20px; height: 10px;"></span>
rRNA Ratio [28s / 18s]:	0.0	Result Flagging Label:	RIN: 2.40

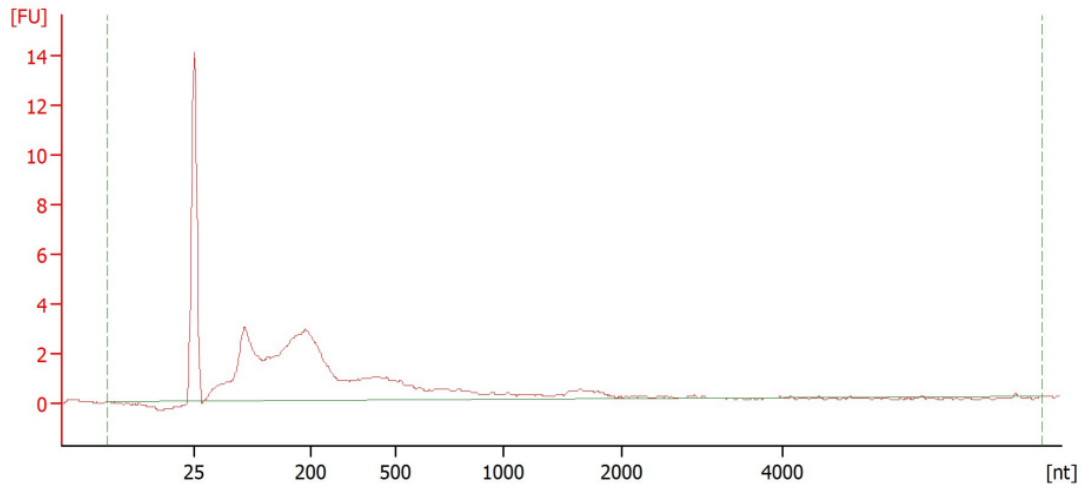


**Overall Results**

**HC001\_BB\_R1A**

RNA Area:	32.7	RNA Integrity Number (RIN):	1.6 (B.02.08)
RNA Concentration:	67 pg/ $\mu$ l	Result Flagging Color:	<span style="background-color: #ccccff; border: 1px solid black; display: inline-block; width: 20px; height: 10px;"></span>
rRNA Ratio [28s / 18s]:	0.0	Result Flagging Label:	RIN: 1.60

MC0033\_BB\_R1A

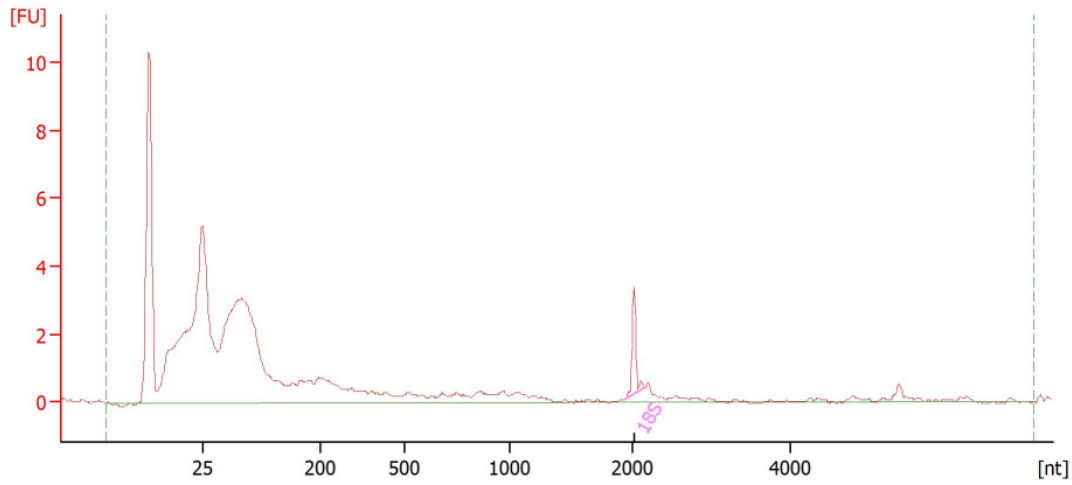


**Overall Results**

**MC0033 BB R1A**

RNA Area:	59.2	RNA Integrity Number (RIN):	2.1 (B.02.08)
RNA Concentration:	122 pg/ $\mu$ l	Result Flagging Color:	<span style="background-color: #ccccff; border: 1px solid black; display: inline-block; width: 20px; height: 10px;"></span>
rRNA Ratio [28s / 18s]:	0.0	Result Flagging Label:	RIN: 2.10

UM054-BB

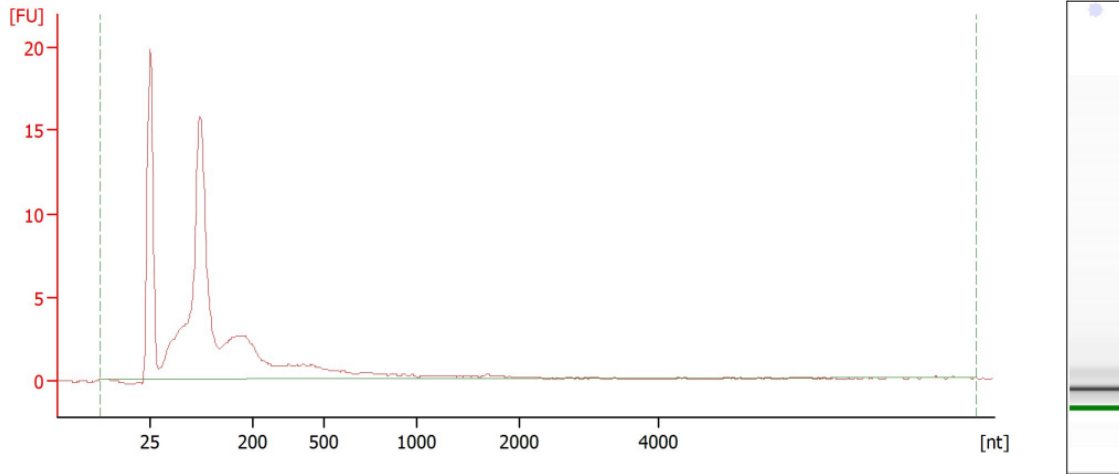


**Overall Results**

**UM054-BB**

RNA Area:	62.5	RNA Integrity Number (RIN):	4.7 (B.02.08)
RNA Concentration:	292 pg/ $\mu$ l	Result Flagging Color:	<span style="background-color: #ccccff; border: 1px solid black; display: inline-block; width: 20px; height: 10px;"></span>
rRNA Ratio [28s / 18s]:	0.0	Result Flagging Label:	RIN: 4.70

UM064-BB

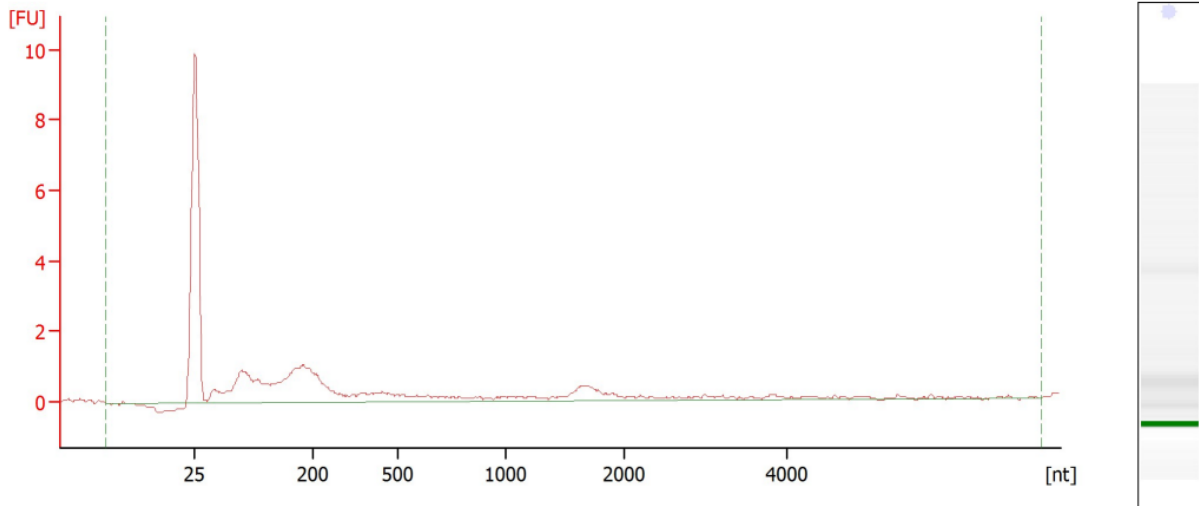


**Overall Results**

**UM064-BB**

RNA Area:	101.8	RNA Integrity Number (RIN):	2.5 (B.02.08)
RNA Concentration:	407 pg/μl	Result Flagging Color:	<span style="background-color: #ccccff; border: 1px solid black; display: inline-block; width: 20px; height: 10px;"></span>
rRNA Ratio [28s / 18s]:	0.0	Result Flagging Label:	RIN: 2.50

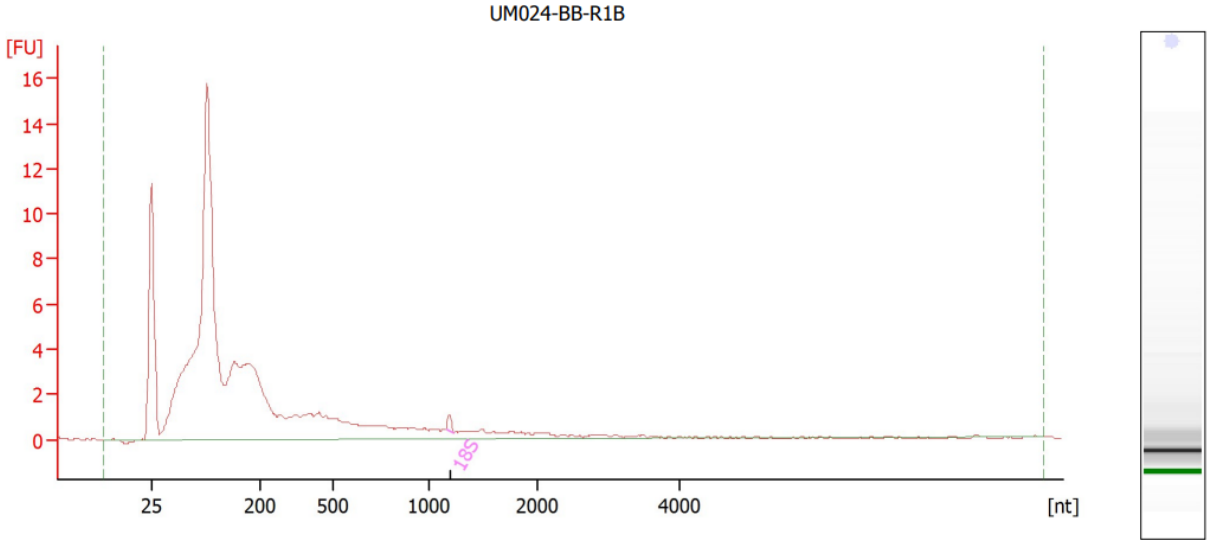
\_HC002\_BB\_R1A



**Overall Results**

**HC002 BB R1A**

RNA Area:	22.0	RNA Integrity Number (RIN):	1.2 (B.02.08)
RNA Concentration:	45 pg/μl	Result Flagging Color:	<span style="background-color: #ccccff; border: 1px solid black; display: inline-block; width: 20px; height: 10px;"></span>
rRNA Ratio [28s / 18s]:	0.0	Result Flagging Label:	RIN: 1.20

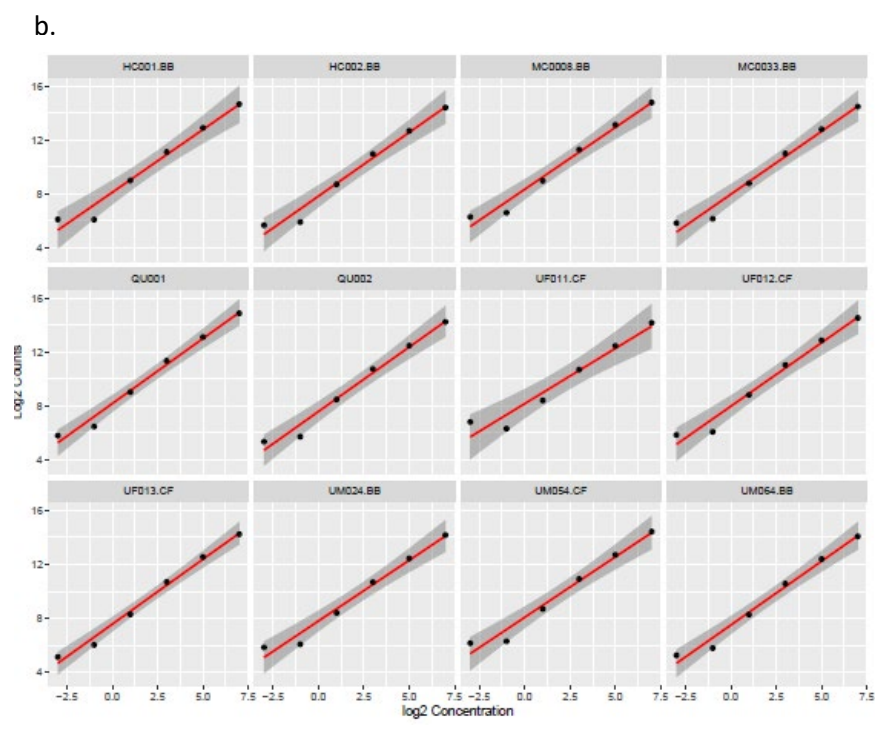
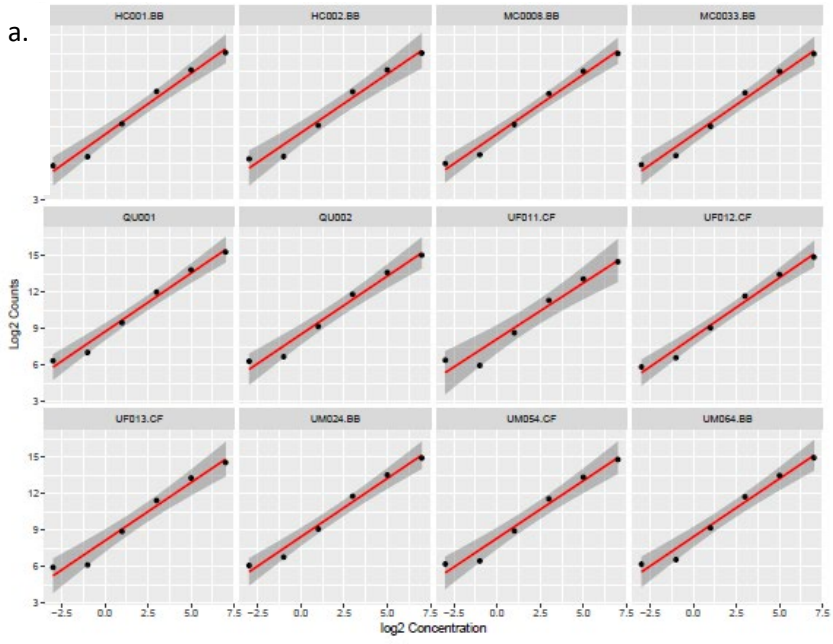


**Overall Results**

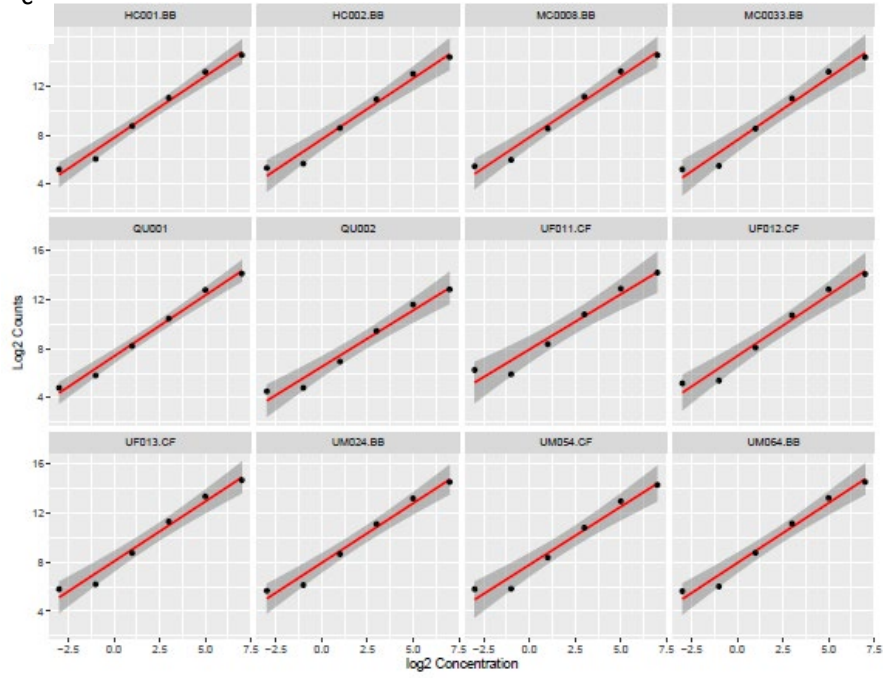
**UM024-BB-R1B**

RNA Area:	113.3	RNA Integrity Number (RIN):	2.5 (B.02.08, Anomaly Threshold(s) manually adapted)
RNA Concentration:	686 pg/ $\mu$ l		
rRNA Ratio [28s / 18s]:	0.0	Result Flagging Color:	<span style="background-color: #ccccff; border: 1px solid black; display: inline-block; width: 20px; height: 10px;"></span>
		Result Flagging Label:	RIN: 2.50

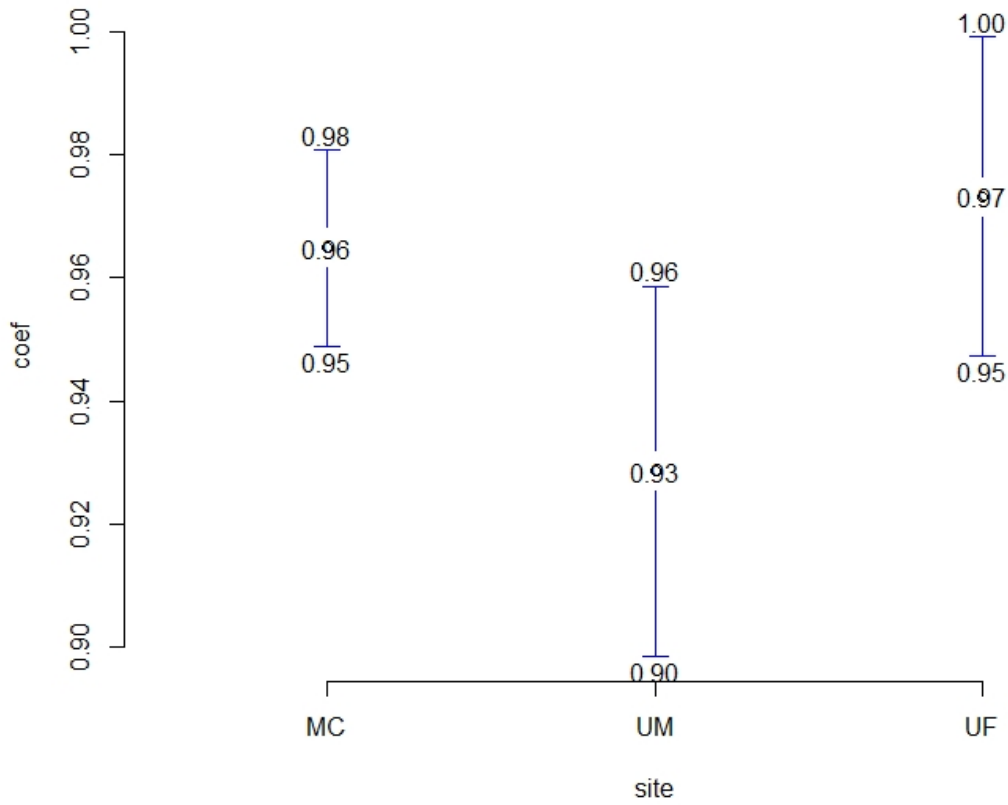
\*Note: Electropherograms were no longer accessible for samples originating at the UF study site and therefore are not included.



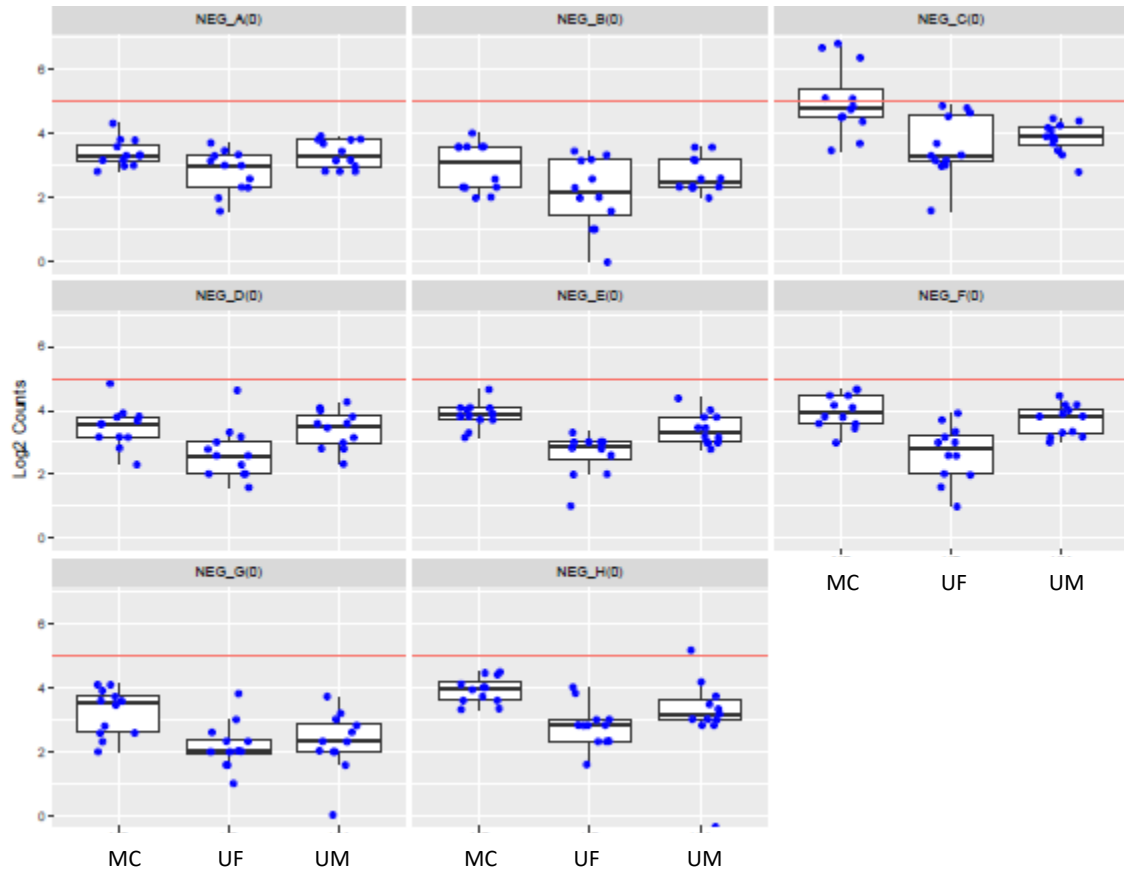
C



d



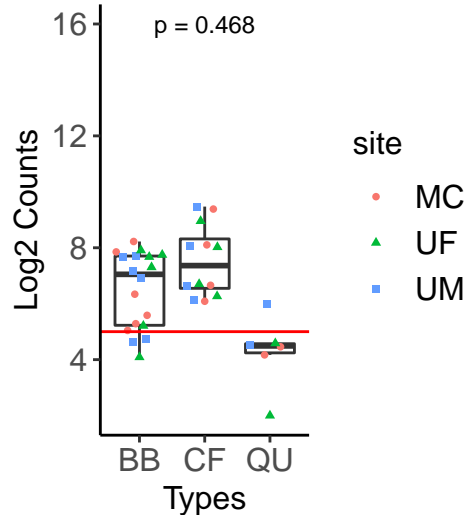
Supplementary Figure 2. Plots of built-in positive control log<sub>2</sub> concentrations and log<sub>2</sub> counts of samples assayed across the three study sites a) MC, b) UF, c) UM and d) Mean and 97.5 confident interval for the coefficient of positive regression line in all samples across the three study sites.



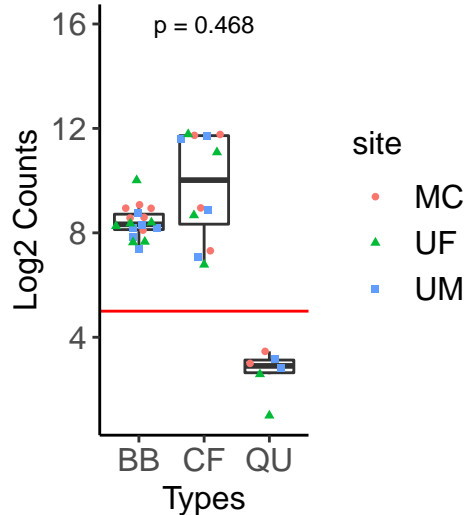
Supplementary Figure 3. Expression of nCounter™ negative control genes across study sites.



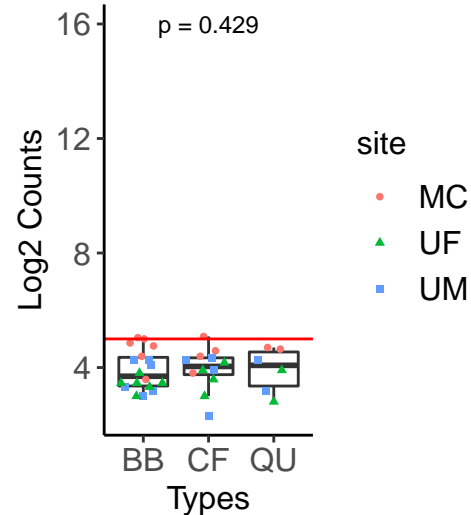
ath-miR159a|0



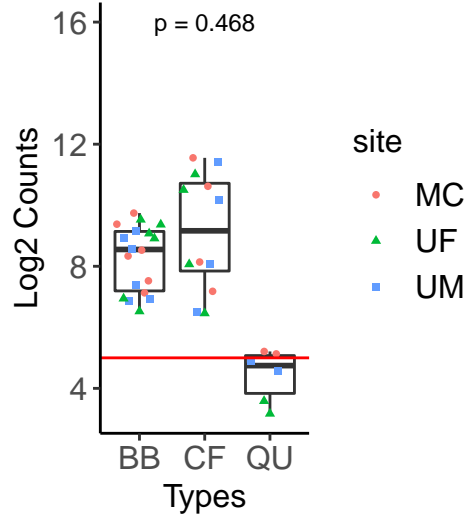
cel-miR-248|0



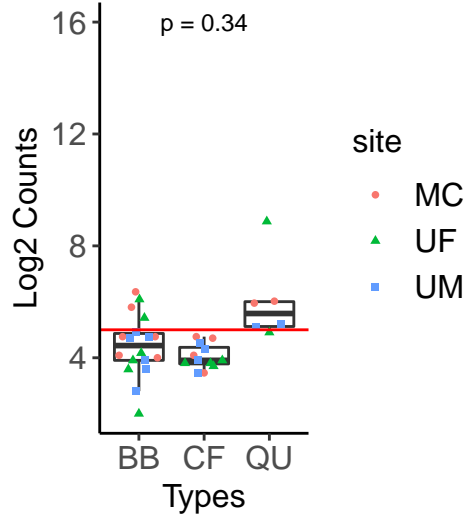
cel-miR-254|0



osa-miR414|0



osa-miR442|0



Kruskal-Wallis,  $p = 0.933$

Correlation Coefficient

1.0  
0.9  
0.8  
0.7

MC\_UF

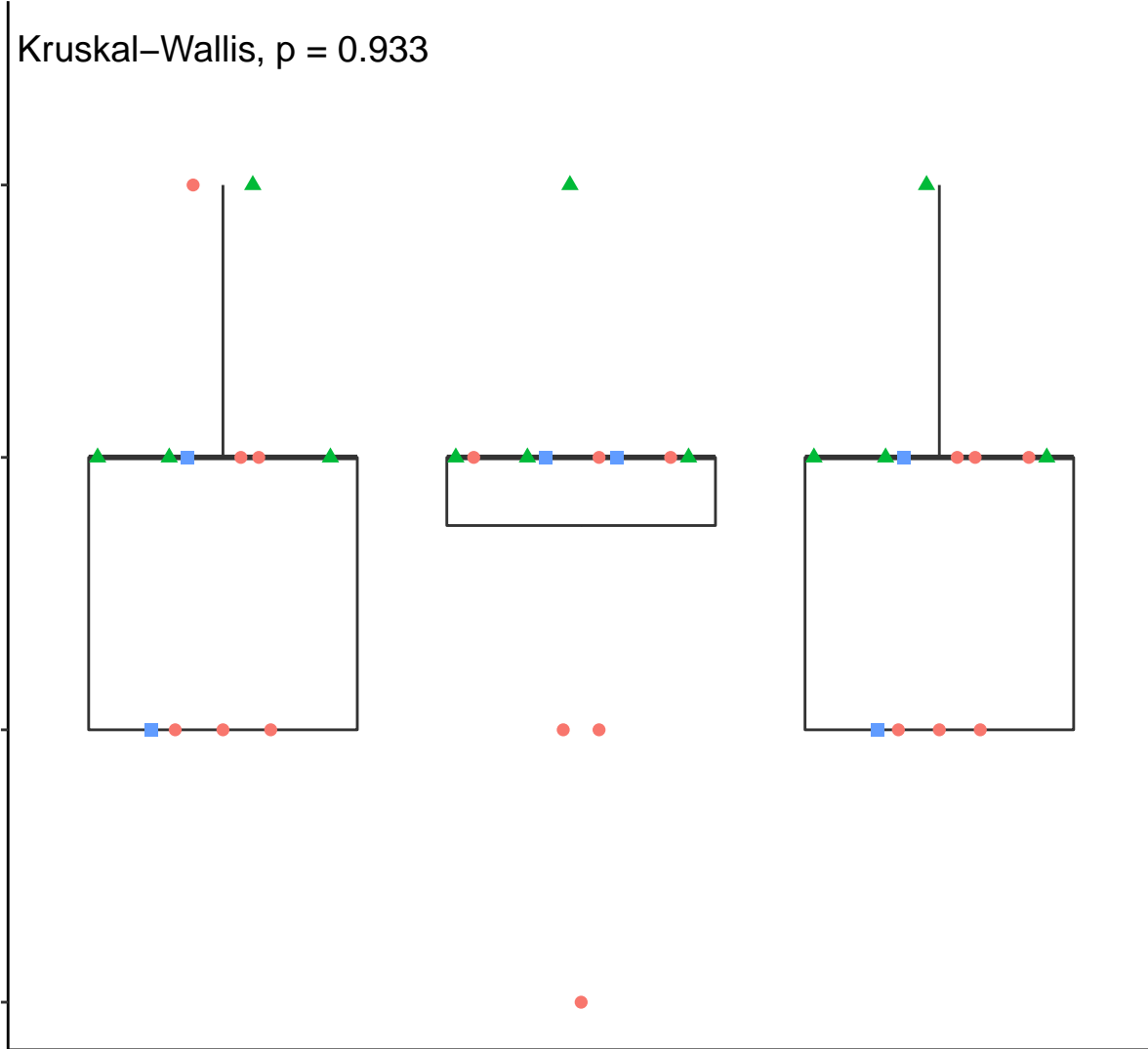
MC\_UM

UM\_UF

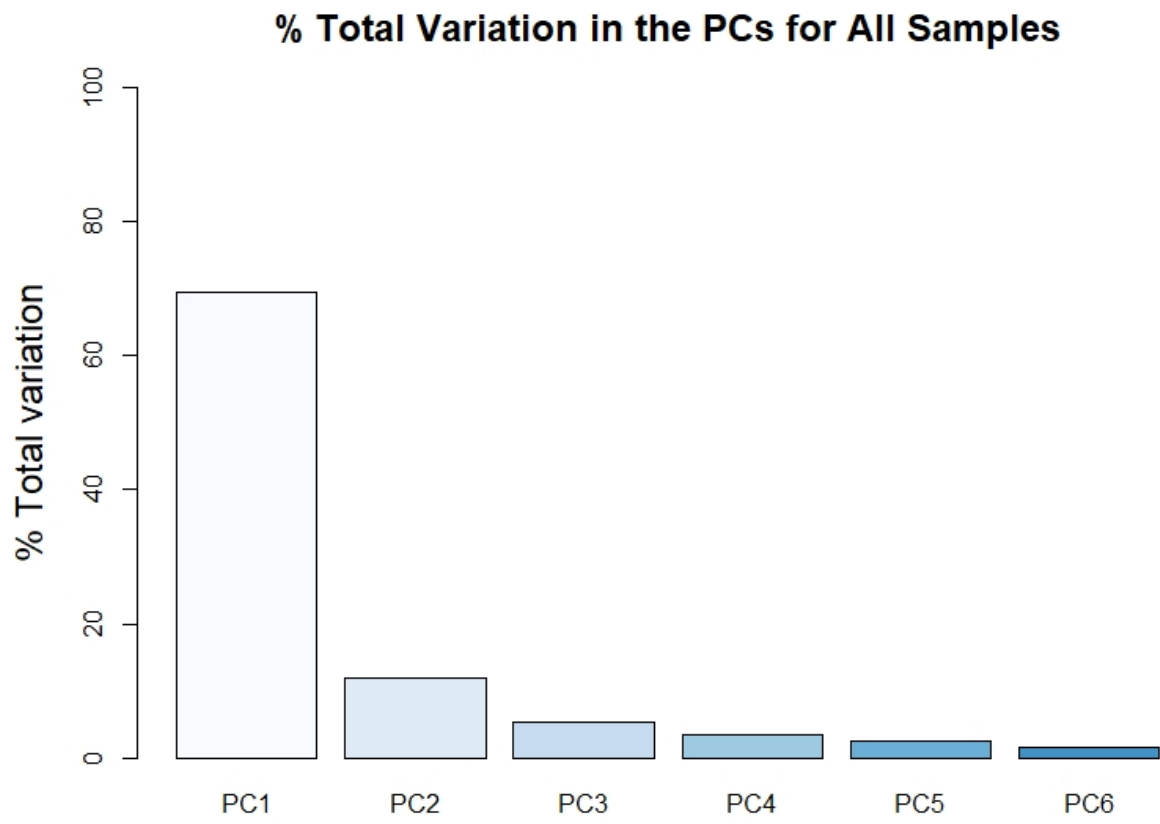
Sites

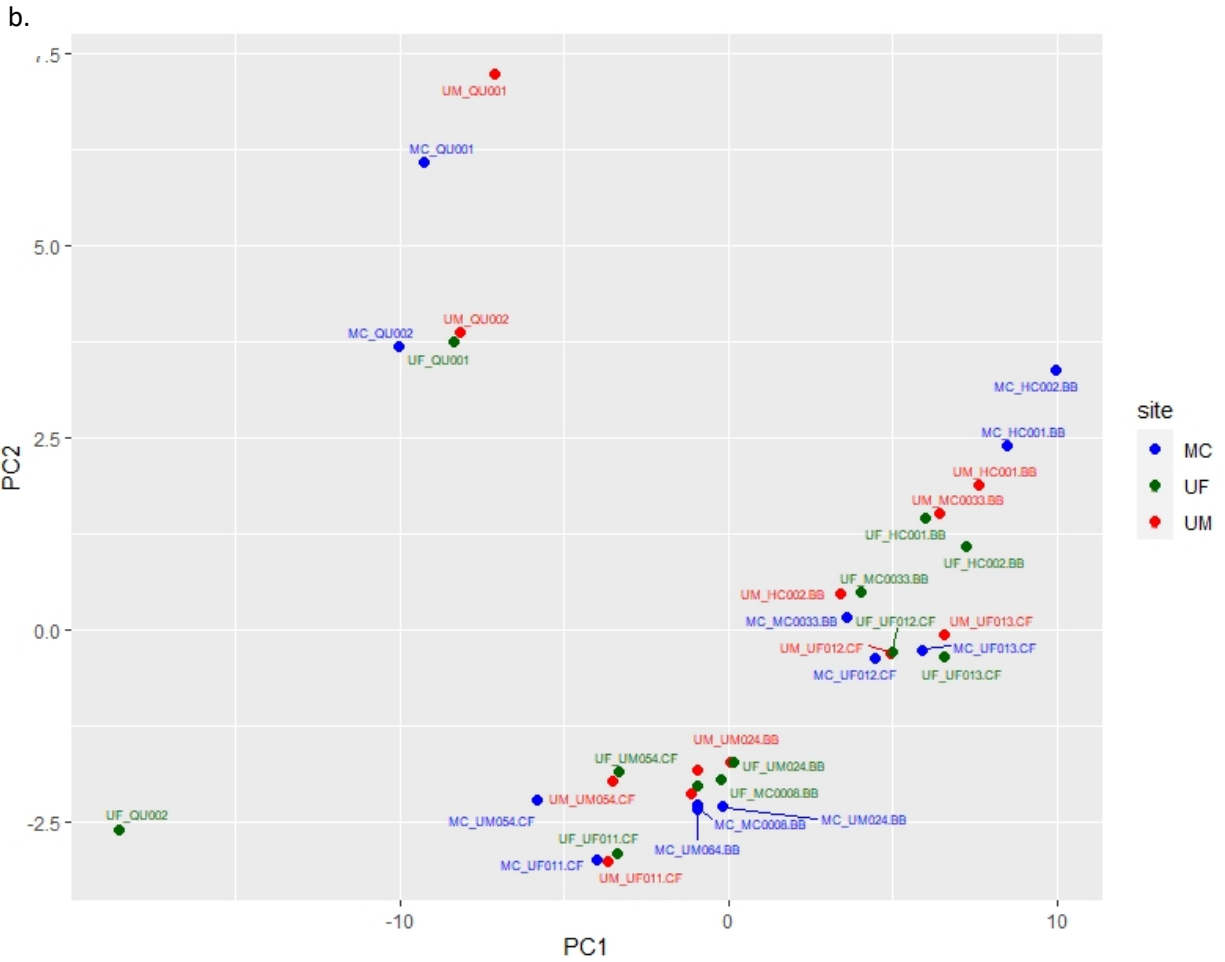
Type

- BB
- ▲ CF
- QU



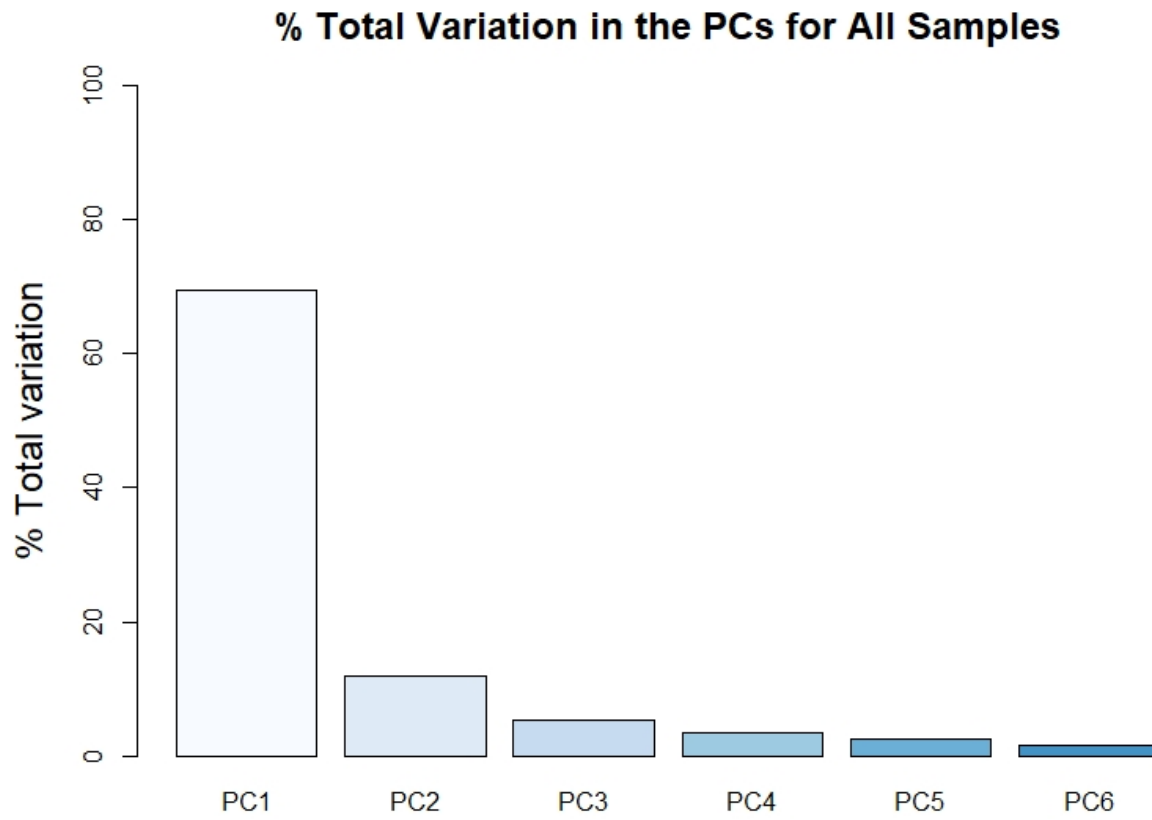
a.





Supplementary Figure 6. Principal component analysis (PCA) for the 55 miRNA targets expressed across >80% of samples. a.) The first principal component (PC1) accounts for most of the variation in the dataset. b.) PCA plot showing that most of the trios cluster together across sites.

a.





Kruskal-Wallis,  $p = 0.377$

Correlation Coefficient

1.0  
0.9  
0.8  
0.7

BB CF QU

Type

Sites

- MC\_UF
- ▲ MC\_UM
- UM\_UF

