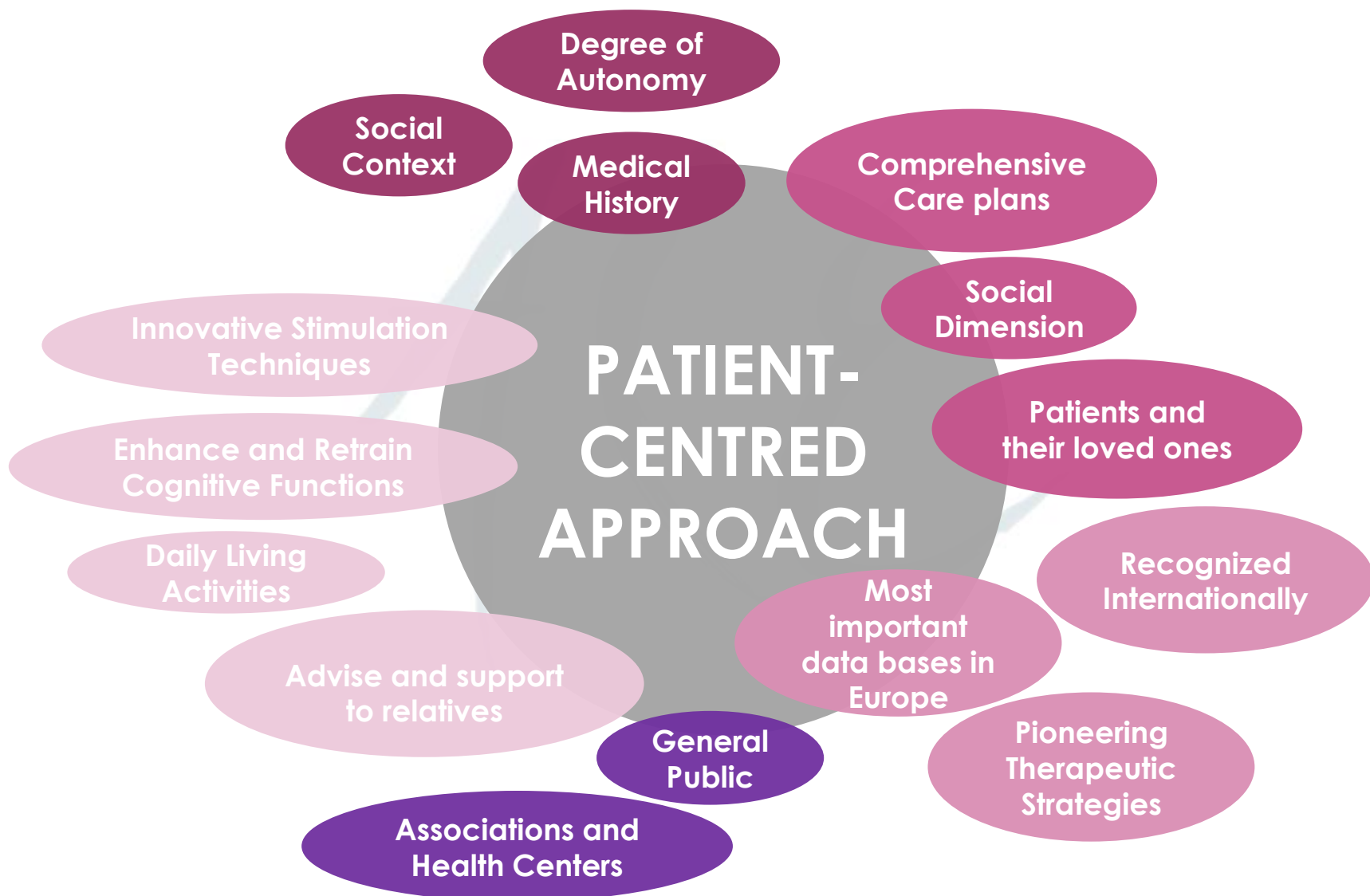


Fundació ACE. Institut Català de Neurociències Aplicades
is a private non-profit foundation, declared a welfare institution by
the Catalan Government (March 31, 1995; No. 883)

- ✓ **Public Health Provider for Public Health System of Catalonia**
- ✓ **Outpatient Specialized Centre of Excellence**
- ✓ **Universitat Internacional de Catalunya UIC- Barcelona**
- ✓ **Member of:**
 - **CIBERNED: Networking Research Center on Neurodegenerative Diseases, Instituto de Salud Carlos III, Spain.**
 - **EADC: European Alzheimer Disease Consortium**
 - **NEUROCHARGE**
 - **European Woman Health Initiative**

ABOUT FUNDACIÓ ACE: COMMITMENT, ENERGY AND PASSION



STANDARDIZED DIAGNOSTIC PROCESS

Catalan Public Health System

INITIAL EVALUATION

210'

1

1. Social worker
Interview with the family (40')

2. Neurologist/Geriatrician
Interview with the family (30')

150'

2

4. Neuropsychologist
Patient NBACE(*)
assessment(50')

3. Neurologist / Geriatrician
Patient clinical assessment
(30')

3

5. Daily consensus conference diagnosis **
(60')

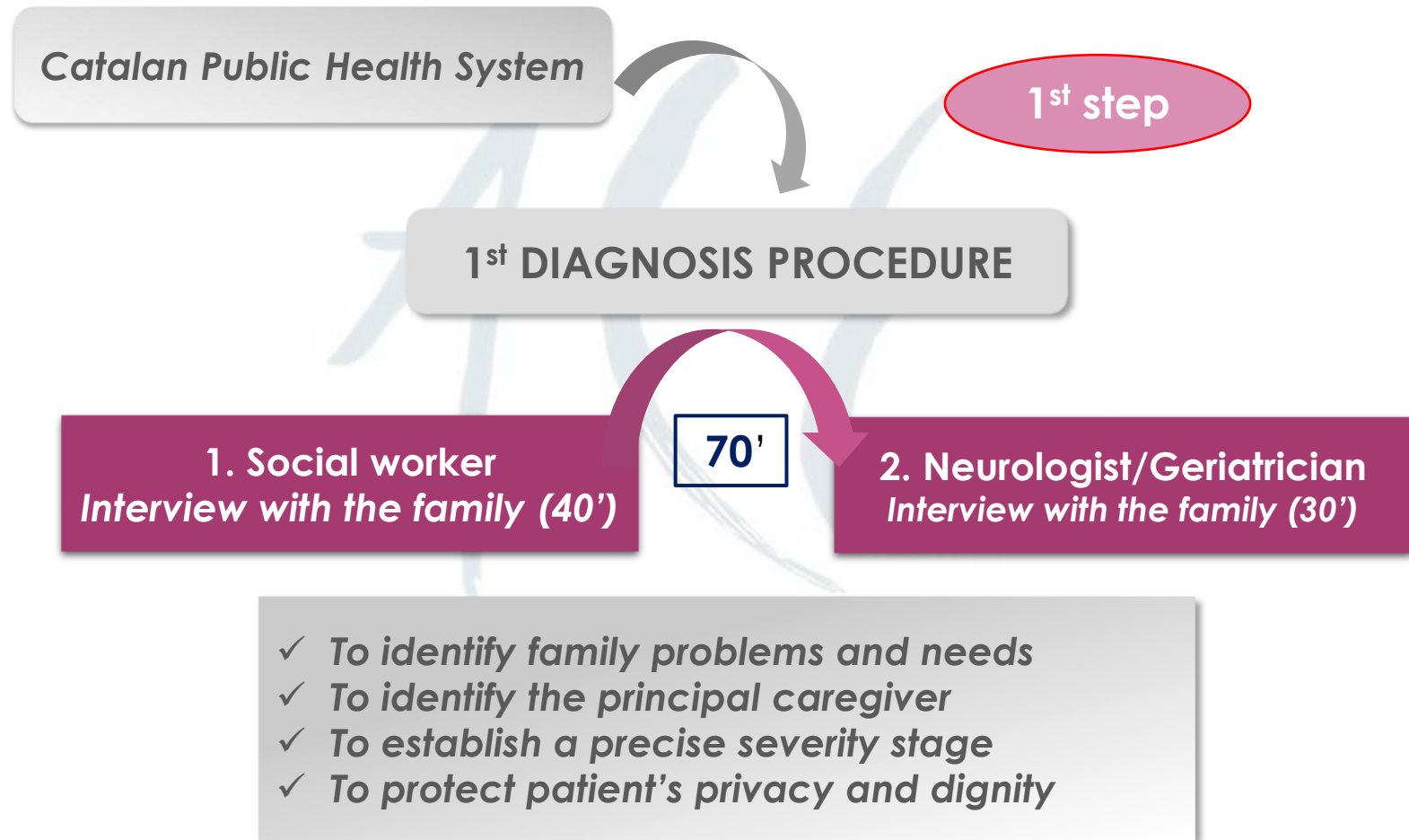
Global and combined diagnosis

Global therapeutic strategy

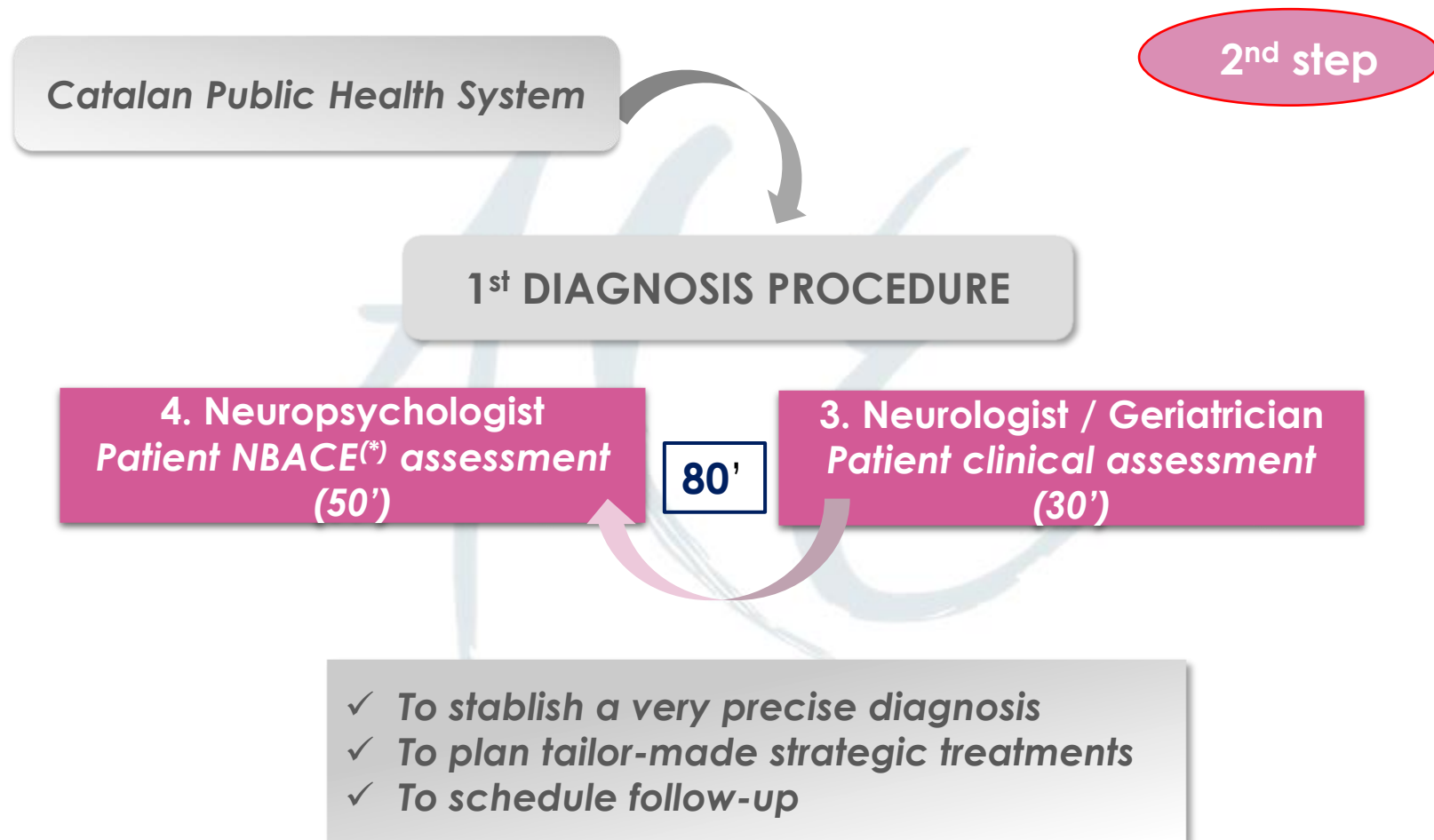
(*) NBACE:
Neuropsychological
battery of Fundació ACE
** Overview clinical
session

6. Family conference (30')

DEDICATED TIME TO THE FAMILY



STANDARDIZED DIAGNOSTIC PROCESS



CONSENSUS DIAGNOSTIC CONFERENCE

