

Short Communication

Cognitive Effects of White Matter Pathology in Normal and Pathological Aging

Alar Kaskikallio^{a,*}, Mira Karrasch^a, Juha O. Rinne^{b,c}, Terhi Tuokkola^b, Riitta Parkkola^d and Petra Grönholm-Nyman^a

^a*Åbo Akademi University, Finland*

^b*Turku PET-Centre, University of Turku, Finland*

^c*Division of Clinical Neurosciences, Turku University Hospital, Finland*

^d*Department of Radiology, University and University Hospital of Turku, Finland*

Accepted 14 November 2018

Abstract. We examined whether cerebrovascular white matter pathology is related to cognition as measured by the compound score of CERAD neuropsychological battery in cognitively normal older adults, patients with mild cognitive impairment, and patients with Alzheimer's disease (total $n = 149$), controlling for age and education. Trend-level effects of white matter pathology on cognition were only observed in patients with Alzheimer's disease ($p = 0.062$, $\eta^2 = 0.052$), patients with severe frontal white matter pathology performed notably worse than those with milder pathology. This indicates that frontal cerebrovascular pathology may have an additive negative effect on cognition in Alzheimer's disease.

Keywords: Alzheimer's disease, cognition, mild cognitive impairment, white matter

INTRODUCTION

Aging is often associated with vascular white matter (WM) brain pathology [1]. The functional consequences of these brain changes are related to their severity and extent, and can range from almost none via mild cognitive decline to dementia. Furthermore, comorbid vascular brain changes are often present in patients with Alzheimer's disease (AD) [2], with a number of WM pathways having been implicated as manifesting significant degeneration in AD [3]. Additionally, cerebrovascular risk factors such as hypertension, smoking, and diabetes are also risk factors for AD [4].

Some studies have examined the effects of vascular brain changes on cognitive function in mild cognitive impairment (MCI) and AD. For example increased WM lesion load has been found to correlate with cognitive impairment in patients with AD [5], and shown to predict the rate of cognitive decline in AD [6]. Furthermore, Rizvi et al. [7] have described WM lesions as affecting cognition both directly and indirectly through grey matter thickness, similarly for both cognitively healthy and cognitively impaired (MCI/AD). However, comparing the differences of the effects on cognitive functions between the groups has not typically been the main focus. Increasing our knowledge of the effects that vascular changes can have on cognition would be especially relevant for clinicians working in cognitive assessment with MCI and AD patients. Thus, our purpose in the current study was to examine if WM changes are related to cognitive function in older adults, patients with MCI

*Correspondence to: Alar Kaskikallio, MA, Department of Psychology, Åbo Akademi University, Tehtaankatu 2, 20500 Turku, Finland. Tel.: +358 44 0610882; E-mail: alar.kaskikallio@abo.fi.

Table 1
Demographic and Clinical Characteristics of Study Participants

	All	C	MCI	AD
<i>n</i>	149	57	40	52
Women %	48 %	46 %	45 %	52 %
Age M (SD), y	72.86 (5.22)	71.47 (5.44)	74.01 (5.40)	73.48 (4.55)
Education level:				
Primary school	73	22	19	32
Vocational school	57	26	13	19
Upper secondary	2	2	0	0
Academic degree	16	7	8	1
CERAD Total Score, M (SD)	79.23 (15.27)	87.75 (10.48)	80.82 (11.68)	68.92 (16.28)
WM Pathology: Frontal ^a				
none/focal	98	41	25	32
b. confluent	39	15	10	14
diffuse	11	1	5	5
WM Pathology: Parieto-occipital ^a				
none/focal	100	46	24	30
b. confluent	37	8	12	17
diffuse	11	3	3	5

^aFrontal MRI data is missing for one participant, and parieto-occipital data for another. b. confluent, beginning confluent; WM, white matter.

and patients with AD, and whether there would be differences in the effects between the groups.

METHODS

The data used in this study has been collected as part of the DEMPET and TWINPIB research projects conducted at the National PET-Centre in Turku, Finland over many years. Both studies were performed in accordance with relevant guidelines and regulations and were approved by the Joint Ethical Committee of the University of Turku and Turku University City Hospital. The diagnosis of MCI was performed according to the Petersen et al. criteria [8], whereas patients with AD satisfied the DSM-IV criteria for dementia as well as the NINCDS-ADRDA (National Institute of Neurological and Communicative Disorders and Stroke/Alzheimer's Disease and Related Disorders Association) criteria for probable AD [9]. All participants underwent an extensive neuropsychological assessment (for an example, see Kemppainen et al. [10]). The Finnish version of the CERAD test battery [11] was included in this assessment, but was not used for group classification. In the current study a minimum score of 25 in the Mini-Mental State Examination was required for inclusion in the healthy adult control group, with two 24-point exceptions being admitted in light of their adequate level of cognitive performance. The final sample consists of 57 healthy adults, 40 patients with MCI, and 52 patients with AD (see Table 1 for demographical

and clinical characteristics of study participants). The participants received oral and written information about the study and gave informed consent before their inclusion.

A total score for the CERAD test battery (CERAD-TS), computed by summing up the scores from a number of subtests, was first described by Chandler et al. [12], and then expanded by Seo et al. [13]. Both composite scores have shown high test-retest and interrater reliability [13], as well as validity in detecting MCI [13, 14] and AD [13, 15]. The expanded total score by Seo et al. was chosen for the current study. Due to missing data for some of the participants, the Word List Recognition score had to be computed without subtracting false positive recognitions from correct positives. Furthermore, two missing data points were imputed by EM missing data analysis in SPSS.

The MRI scanning of the subjects was performed with 1.5T Philips Intera (Best, the Netherlands). WM changes were analyzed using T2 and FLAIR (fluid attenuated inversion recovery) images. Our focus was on the WM changes in the frontal and parieto-occipital lobes, since visual ratings of these regions have the highest interrater reliability [16]. Two radiologists analyzed the sequences independently on a personal computer, using the Wahlund scale ranging from 0 (no lesions) to 3 (confluent lesions) [16]. The higher one of the two scores was assigned as the final hemispheric WM score. Measures were given for the frontal and parieto-occipital lobes in the left and right hemispheres separately, after which the

hemispheric scores were combined to form summary scores. These were further transformed into a three-level categorical variable ranging from none/focal changes (0–2 points in the hemispheric summary score), through beginning confluent changes (3–4 points) to diffuse changes (5–6 points). This was performed for both the frontal and parieto-occipital regions.

For statistical analyses, we first examined any potential age, education, and gender effects by conducting a series of parametric (independent samples *t*-test) and non-parametric (Mann-Whitney's U-test, Pearson's chi-square) tests. Possible differences in cognitive performance between the groups were analyzed by a series of independent samples *t*-tests. For testing our main research questions, we conducted separate univariate ANOVAs, for the frontal and parieto-occipital regions respectively, with age and level of education as covariates and the CERAD-TS score as the dependent variable. One participant had to be excluded from the frontal analysis due to missing MRI data and another was excluded from the parieto-occipital analysis for the same reason. Data analysis was performed using the IBM SPSS statistics software v. 24.

RESULTS

Demographic and clinical characteristics of study participants are presented in Table 1. There were

some differences regarding the demographic characteristics, but of a very small magnitude: The control group was younger than the MCI group, $t(95) = -2.27, p < 0.05, d = 0.05$, and the AD group, $t(107) = -2.08, p < 0.05, d = 0.04$, and also more educated than the AD group, $U = 1070.50, z = -2.78, p = 0.005, \eta^2 = 0.06$. The distribution of gender was the same across the groups, $\chi^2(2) = 0.59, p = 0.745$.

As would be expected, the control group had higher cognitive performance than the MCI group, $t(95) = 3.17, p = 0.002, d = 0.07$, and the AD group, $t(107) = 7.32, p < 0.001, d = 0.14$, and the MCI group fared better than the AD group, $t(90) = 3.90, p < 0.001, d = 0.08$.

The results regarding the analysis of the main study variables can be found in Table 2. Concerning cerebrovascular pathology, no significant main effects of WM pathology on cognitive performance were encountered. However, a significant interaction effect between the group and level of frontal WM changes was found. The control group contained a single participant with diffuse WM changes, who also had unusually high cognitive test scores. In order to examine whether this single participant may have affected the results, we removed the participant and rerun the analysis. After this, the interaction term between group and level of frontal WM changes no longer reached the 0.05 alpha level, but was very close. Moreover, the effect size was still nearly moderate, which indicates that the interaction explained a considerable amount of variation. This trend level

Table 2
Univariate ANOVA results of the study variables

Analysis	IV	df	Mean Square	F	<i>p</i>	η^2	
Frontal	Unadjusted	Group	2, 139	3068.79	18.95	0.000	0.214
		WM Score	2, 139	14.78	0.09	0.913	0.001
		Group * WM Score	4, 139	394.70	2.44	0.050	0.066
	Adjusted ^a	Group	2, 137	2569.26	17.82	0.000	0.206
		WM Score	2, 137	8.08	0.06	0.946	0.001
		Group * WM Score	4, 137	402.06	2.79	0.029	0.075
Adjusted + removed outlier ^b	Group	2, 137	2934.42	20.347	0.000	0.229	
	WM Score	2, 137	372.90	2.586	0.079	0.036	
	Group * WM Score	3, 137	360.39	2.499	0.062^c	0.052	
Parieto-Occipital	Unadjusted	Group	2, 139	2769.91	15.91	0.000	0.186
		WM Score	2, 139	18.58	0.11	0.899	0.002
		Group * WM Score	4, 139	98.70	0.57	0.687	0.016
	Adjusted ^a	Group	2, 137	2245.56	14.54	0.000	0.175
		WM Score	2, 137	8.65	0.06	0.946	0.001
		Group * WM Score	4, 137	174.15	1.13	0.346	0.032

^aThe results have been adjusted for education and age. ^bThe results have been adjusted for education and age, and an outlier has been removed. ^cTrend-level significance.

169 interaction was due to the fact that AD patients with
 170 confluent WM lesions performed worse than those
 171 with less WM changes.

172 DISCUSSION

173 The focus of this study was to examine if WM
 174 pathology, specifically in frontal and occipito-parietal
 175 areas, is related to cognitive function in older adults,
 176 patients with MCI and patients with AD, as mea-
 177 sured with the CERAD-TS. These areas were chosen
 178 since visual ratings of them have shown the highest
 179 interrater reliability [16]. As expected, significant dif-
 180 ferences in cognitive function were found between
 181 all three groups; highest performances were found
 182 in the control group, intermediate performances
 183 in the MCI group and lowest test scores in the
 184 AD group. Additionally, a significant interaction
 185 effect was found between group and the level of
 186 frontal WM changes. After removing an outlier
 187 from the control group, the interaction term fell
 188 below statistical significance, but only marginally so
 189 ($p=0.062$). The effect size remained nearly moder-
 190 ate, indicating that the interaction still explained a
 191 considerable amount of variation. AD patients with
 192 severe frontal WM changes had the lowest cogni-
 193 tive performances, notably lower than AD patients
 194 with milder levels of frontal WM pathology (see
 195 Fig. 1). Frontal and temporal WM lesions have been
 196 found to correlate with the CERAD-TS in mixed
 197 groups (C/MCI/AD) [5], but our study indicates that
 198 at least the changes relating to the frontal WM pathol-
 199 ogy may stem from patients with dementia of the
 200 AD type.

201 Parieto-occipital WM changes were not related to
 202 cognitive performance in any of the groups. One
 203 explanation for this might be the fact that most of
 204 the CERAD subtests place relatively more emphasis
 205 on verbal than visuospatial functions. Thus, multi-
 206 domain cognitive analyses would be recommended
 207 in the future.

208 In addition to a cross-sectional design, uneven
 209 group sizes are a limitation of the current study.
 210 The none/focal WM changes group is overrepre-
 211 sented, whereas the diffuse WM changes group is
 212 substantially smaller in size, which can amplify the
 213 possibility of a type II error.

214 The effects of WM pathology on cognition in
 215 cognitively healthy adults, MCI, and AD have been
 216 examined in some studies, though comparing the
 217 differences of the effects between groups has not

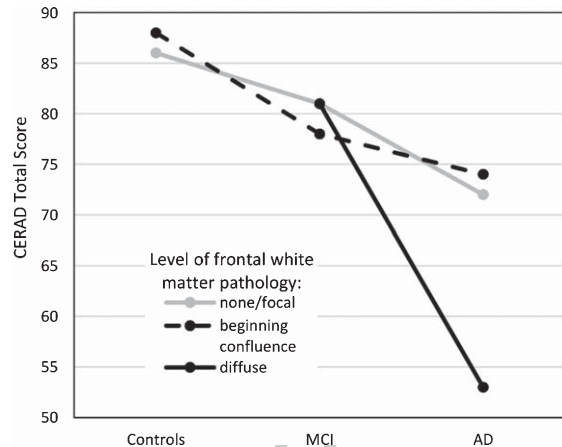


Fig. 1. Cognitive performance (as measured by the CERAD Total Score, range 0–115) in the three patient groups as a function of frontal white matter pathology. Estimated marginal means reported. MCI, mild cognitive impairment; AD, Alzheimer's disease.

218 typically been the main focus. For example, previ-
 219 ous studies have shown connections between WM
 220 changes and the rate of cognitive decline in AD [6],
 221 and the incidence of dementia in elderly individu-
 222 als [17], as well as correlations between WM lesions
 223 in the corpus callosum and the fornices and global
 224 cognition in AD patients [5].

225 Furthermore, these phenomena have also been
 226 examined from another perspective, as some stud-
 227 ies have studied the effects of amyloid pathology
 228 in patients with subcortical vascular dementia (for
 229 a review, see [18]). Park et al. [19] found that cog-
 230 nitive performance in immediate and delayed mem-
 231 ory tasks was significantly worse in subcortical vas-
 232 cular dementia patients with extreme amyloidosis,
 233 suggesting that amyloid pathology has an independ-
 234 ent effect on memory performance in the presence
 235 of cerebrovascular pathology. It is noteworthy, that
 236 while some studies have reported that cerebrovascu-
 237 lar and AD pathology measures were uncorrelated
 238 [20], other studies have suggested the possibility
 239 for independent processes as well as interactions
 240 between these pathologies [21].

241 In summary, the current study builds on previ-
 242 ous research concerning the interplay between AD
 243 and cerebrovascular pathology, and results indicate
 244 that concomitant frontal WM lesions in AD patients
 245 may lead to additive decline in cognitive function-
 246 ing. To our knowledge we are the first ones to report
 247 this additivity of cognitive impairments in relation
 248 to specifically frontal WM lesions in AD. Further-
 249 more, from a clinical perspective it is noteworthy

that these can be detectable even when using rough general-level cognitive measures.

Further studies are needed to elucidate whether domain-specific effects can be found using more sophisticated neuropsychological instruments. Using quantitative methods that allow for more localized analyses of vascular pathology could also shed light on the relationship between vascular pathology and its cognitive repercussions in AD.

ACKNOWLEDGMENTS

Alar Kaskikallio was funded by the Department of Psychology at Åbo Akademi University. We also wish to thank the National PET-Centre in Turku for providing the research data.

Authors' disclosures available online (<https://www.j-alz.com/manuscript-disclosures/18-0554r2>).

REFERENCES

- [1] Feigin VL, Lawes CMM, Bennett DA, Anderson CS, West F (2003) Stroke epidemiology: A review of population-based studies of incidence, prevalence, and case-fatality in the late 20th century. *Lancet Neurol* **2**, 43-53.
- [2] Smith E (2016) Vascular cognitive impairment. *Contin Life-long Learn Neurol* **22**, 490-509.
- [3] Mito R, Raffelt D, Dholander T, VAughan DN, Tournier JD, Salvado O, Brodtmann A, Rowe CC, Villemagne VL, Connelly A (2018) Fibre-specific white matter reductions in Alzheimer's disease and mild cognitive impairment. *Brain* **141**, 888-902.
- [4] Duron E, Hanon O (2008) Vascular risk factors, cognitive decline, and dementia. *Vasc Health Risk Manag* **4**, 363-381.
- [5] Bilello M, Doshi J, Nabavizadeh SA, Toledo JB, Erus G, Xie SX, Trojanowski JQ, Han X, Davatzikos C (2015) Correlating cognitive decline with white matter lesion and brain atrophy MRI measurements in Alzheimer's disease. *J Alzheimers Dis* **48**, 987-994.
- [6] Brickman AM, Honig LS, Scarmeas N, Tatarina O, Sanders L, Albert MS, Brandt J, Blacker D, Stern Y (2008) Measuring cerebral atrophy and white matter hyperintensity burden to predict the rate of cognitive decline in Alzheimer disease. *Arch Neurol* **65**, 1202-1208.
- [7] Rizvi B, Narkhede A, Last BS, Budge M, Tosto G, Manly JJ, Schupf N, Mayeux R, Brickman AM (2017) The effect of white matter hyperintensities on cognition is mediated by cortical atrophy. *Neurobiol Aging* **64**, 25-32.
- [8] Petersen RC, Stevens JC, Ganguli M, Tangalos EG, Cummings JL, DeKosky ST (2001) Practice parameter: Early detection of dementia: Mild cognitive impairment (an evidence-based review). *Neurology* **56**, 1133-1142.
- [9] McKhann G, Drachman D, Folstein M, Katzman R, Price D, Stadlan EM (1984) Clinical diagnosis of Alzheimer's disease: Report of the NINCDS-ADRDA Work Group under the auspices of Department of Health and Human Services Task Force on Alzheimer's Disease. *Neurology* **34**, 939-944.
- [10] Kempainen NM, Aalto S, Karrasch M, Nägren K, Savisto N, Oikonen V, Viitanen M, Parkkola R, Rinne JO (2008) Cognitive reserve hypothesis: Pittsburgh compound B and fluorodeoxyglucose positron emission tomography in relation to education in mild Alzheimer's disease. *Ann Neurol* **63**, 112-118.
- [11] Morris JC, Heyman A, Mohs RC, Hughes JP, Vanbelle G, Fillenbaum G, Mellits ED, Clark C (1989) The consortium to establish a registry for Alzheimer's disease (CERAD). Clinical and neuropsychological assessment of Alzheimer's disease. *Neurology* **39**, 1159-1165.
- [12] Chandler MJ, Lacritz LH, Hynan LS, Barnard HD, Allen G, Deschner M, Weiner MF, Cullum CM (2005) A total score for the CERAD neuropsychological battery. *Neurology* **65**, 102-106.
- [13] Seo EH, Lee DY, Lee JH, Choo IH, Kim JW, Kim SG, Park SY, Shin JH, Do YJ, Yoon JC, Jhoo JH, Kim KW, Woo JI (2010) Total scores of the CERAD neuropsychological assessment battery: Validation for mild cognitive impairment and dementia patients with diverse etiologies. *Am J Geriatr Psychiatry* **18**, 801-809.
- [14] Paajanen T, Hänninen T, Tunnard C, Mecocci P, Sobow T, Tsolaki M, Vellas B, Lovestone S, Soininen H, AddNeuroMed Consortium (2010) CERAD neuropsychological battery total score in multinational mild cognitive impairment and control populations: The AddNeuroMed study. *J Alzheimers Dis* **22**, 1089-1097.
- [15] Paajanen T, Hänninen T, Tunnard C, Hallikainen M, Mecocci P, Sobow T, Tsolaki M, Vellas B, Lovestone S, Soininen H (2014) CERAD neuropsychological compound scores are accurate in detecting prodromal Alzheimer's disease: A prospective AddNeuroMed study. *J Alzheimers Dis* **39**, 679-690.
- [16] Wahlund LO, Barkhof F, Fazekas F, Bronge L, Augustin M, Sjögren M, Wallin A, Ader H, Leys D, Pantoni L, Pasquier F, Erkinjuntti T, Scheltens P (2001) European Task Force on Age-Related White Matter Changes. A new rating scale for age-related white matter changes applicable to MRI and CT. *Stroke* **32**, 1318-1322.
- [17] Mortimer JA (2012) The Nun Study: Risk factors for pathology and clinical-pathologic correlations. *Curr Alzheimer Res* **9**, 621-627.
- [18] Kapasi A, DeCarli C, Schneider JA (2017) Impact of multiple pathologies on the threshold for clinically overt dementia. *Acta Neuropathol* **134**, 171-186.
- [19] Park J-H, Seo SW, Kim C, Kim SH, Kim GH, Kim ST, Jeon S, Lee JM, Oh SJ, Kim JS, Cho YS, Lee K-H, Shin JS, Kim CH, Noh Y, Cho H, Yoon CW, Kim HJ, Ye BS, Ewers M, Weiner MW, Lee J-H, Werring DJ, Na DL (2014) Effects of cerebrovascular disease and amyloid beta burden on cognition in subjects with subcortical vascular cognitive impairment. *Neurobiol Aging* **35**, 254-260.
- [20] Marchant NL, Reed BR, Sanossian N, Madison CM, Kriger S, Dhada R, Mack WJ, DeCarli C, Weiner MW, Mungas DM, Chui HC, Jagust WJ (2013) The aging brain and cognition: Contribution of vascular injury and A β to mild cognitive dysfunction. *JAMA Neurol* **70**, 488-495.
- [21] Hughes TM, Kuller LH, Barinas-Mitchell EJM, Mackey RH, McDade EM, Klunk WE, Aizenstein HJ, Cohen AD, Snitz BE, Mathis CA, DeKosky ST, Lopez OL (2013) Pulse wave velocity is associated with β -amyloid deposition in the brains of very elderly adults. *Neurology* **81**, 1711-1718.