

# Urinary Homocysteic Acid Levels Correlate with Mini-Mental State Examination Scores in Alzheimer's Disease Patients

Tohru Hasegawa<sup>a,\*</sup>, Masayoshi Ichiba<sup>b</sup>, Shin-ei Matsumoto<sup>c</sup>, Koji Kasanuki<sup>d</sup>, Taku Hatano<sup>c</sup>, Hiroshige Fujishiro<sup>d</sup>, Eizo Iseki<sup>d</sup>, Nobutaka Hattori<sup>c</sup>, Tatsuo Yamada<sup>e</sup> and Takeshi Tabira<sup>c</sup>

<sup>a</sup>*Saga Woman Junior College, Saga, Japan*

<sup>b</sup>*Social Medicine, Faculty of Medicine, Saga University, Saga, Japan*

<sup>c</sup>*Department of Neurology, Graduate School of Medicine, Juntendo University, Bunkyo-ku, Tokyo, Japan*

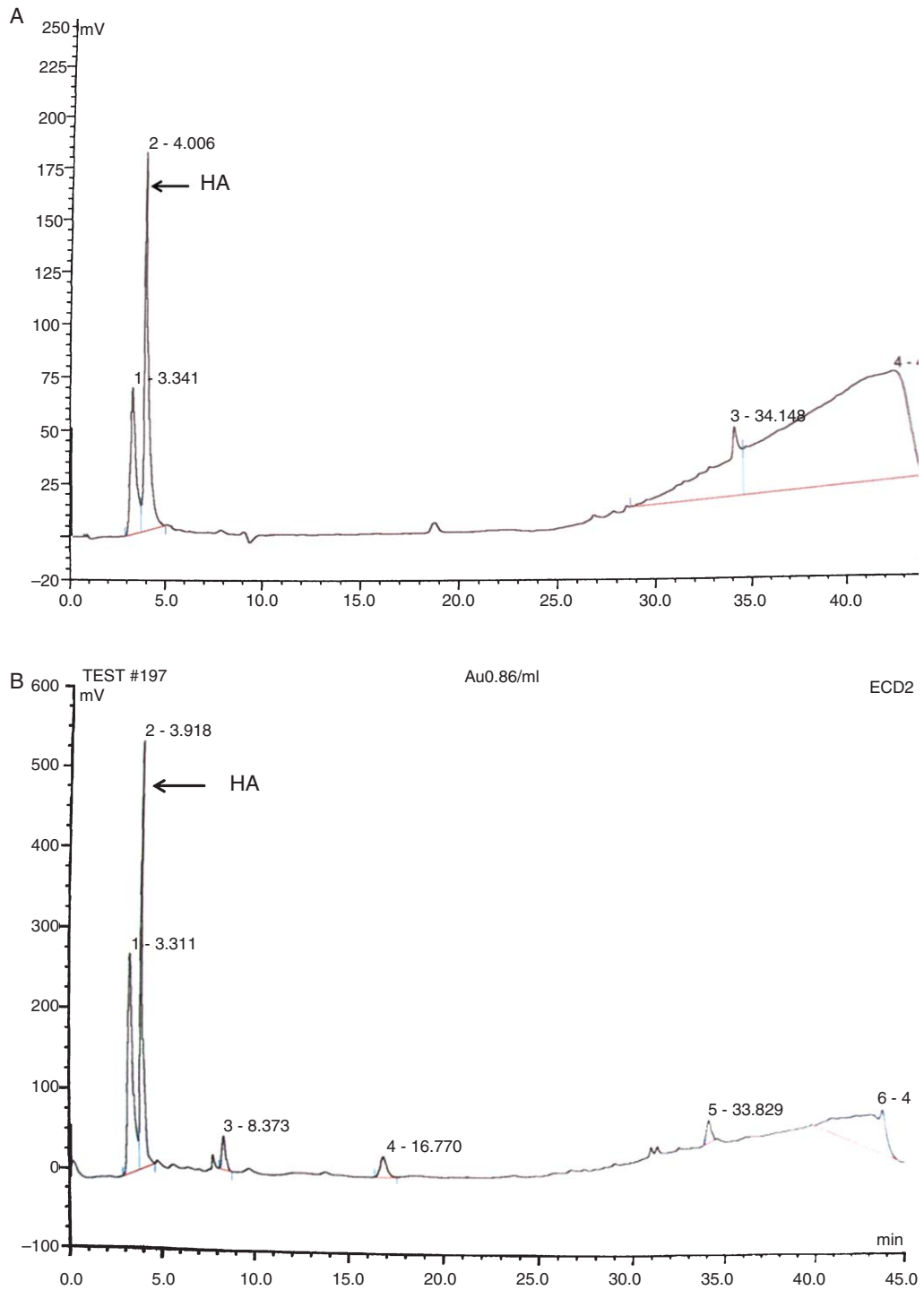
<sup>d</sup>*PET/CT Dementia Research Center, Juntendo Tokyo Koto Geriatric Medical Center, Juntendo University School of Medicine, Koto-ku, Tokyo, Japan*

<sup>e</sup>*Department of Neurology, Faculty of Medicine, Fukuoka University, Fukuoka, Japan*

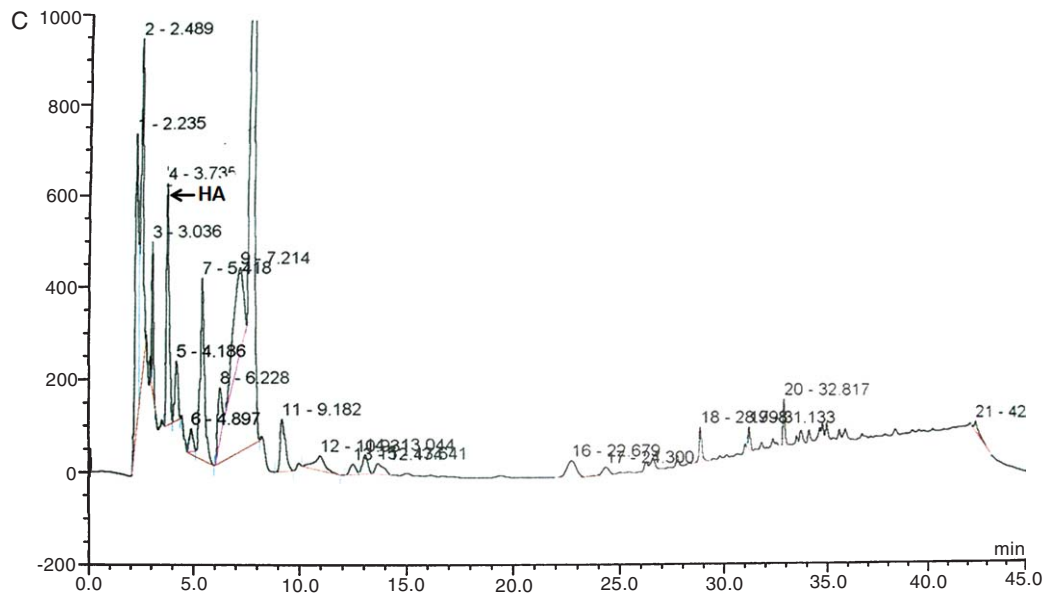
Accepted 22 March 2012

---

\*Correspondence to: Tohru Hasegawa, Social Medicine, Faculty of Medicine, Saga University, 5-1-1 Nabeshima, Saga 840-8502, Japan. Tel.: +81 952 34 2289; E-mail: hasegawa@yumekoboshizuka.com.



Supplementary Figure 1. Examples of ECD-HPLC chromatograms of an authentic sample (A), urine (B), and blood (C). The retention time of authentic homocysteic acid (HA) was 4.00 min (A). The retention time of HA was 3.9–4.1 min in urine and 3.6–3.8 min in blood. When urine sample was measured, HPLC-ECD detector sensitivity was modified 10 times lower than that of blood. From the peak height, HA concentration in urine was calculated as 12.3 mM, and that in blood was 19.8  $\mu$ M.



Supplementary Figure 1. (Continued).