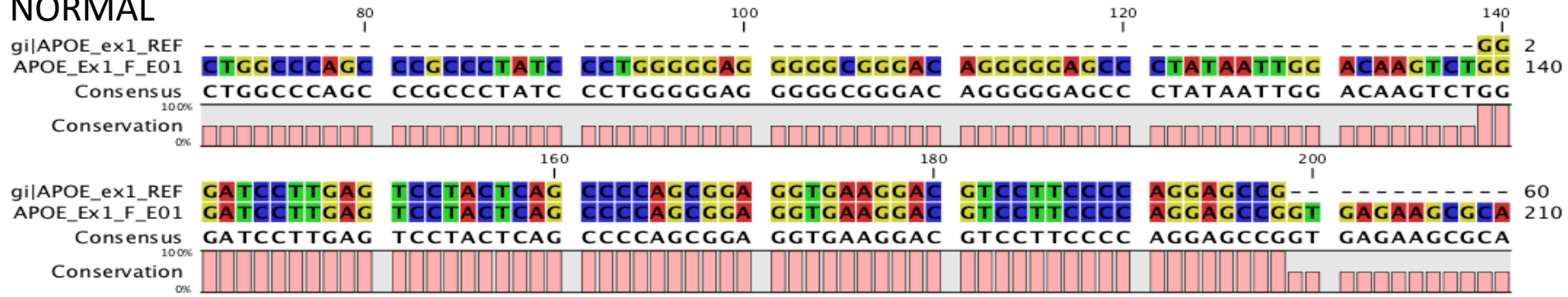


Supplementary Material

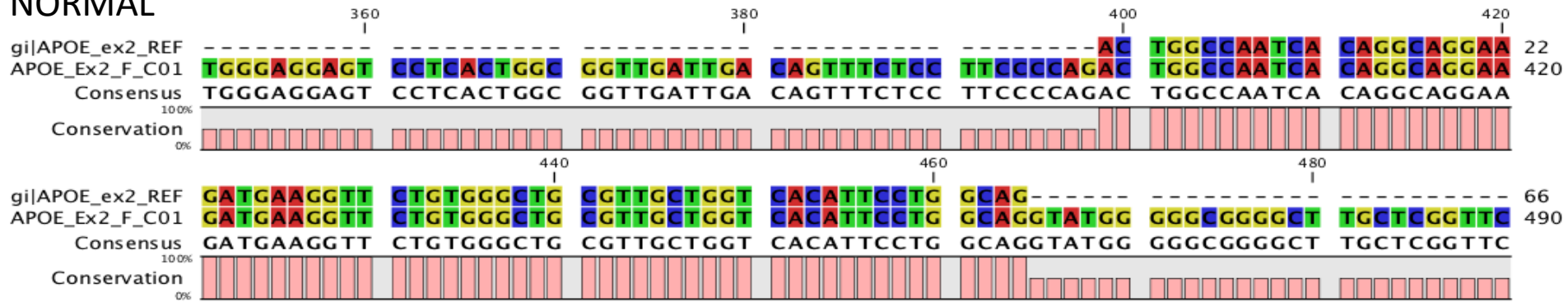
Discovery of a Missense Mutation (Q222K) of the *APOE* Gene from the Australian Imaging, Biomarker and Lifestyle Study

Supplementary Figure 1. Sequence data showing the mutation for ϵ 4/4 labeled with a red box and rs429358 CC and rs7412 CC. And the missense mutation for Q222 to lysine highlighted with a green box and shown with the forward (FWD) and reverse (RVS) sequence data.

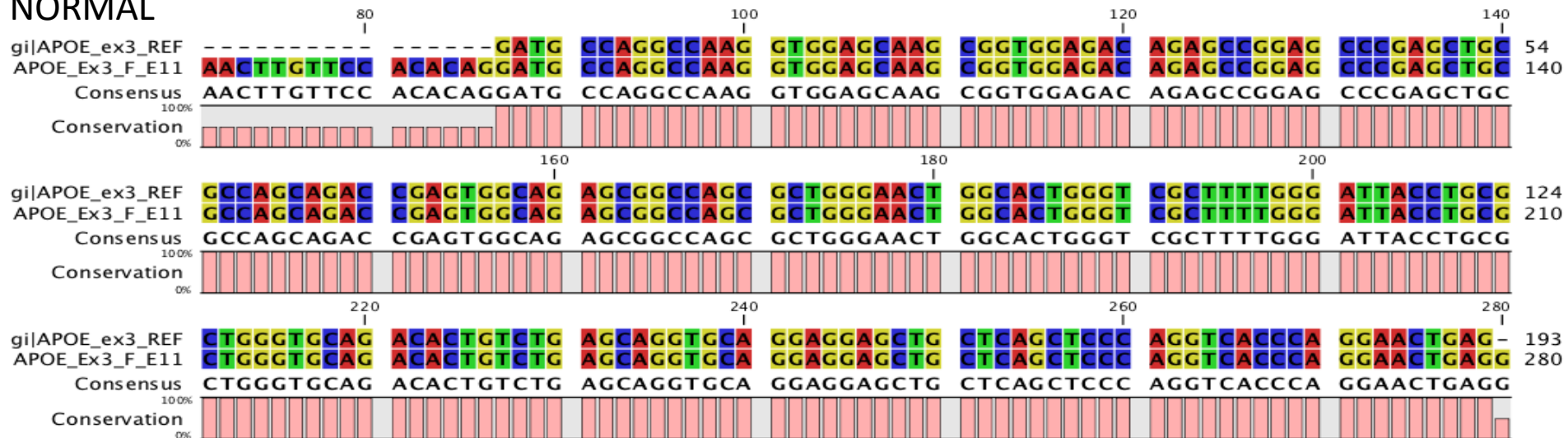
Exon 1: NORMAL



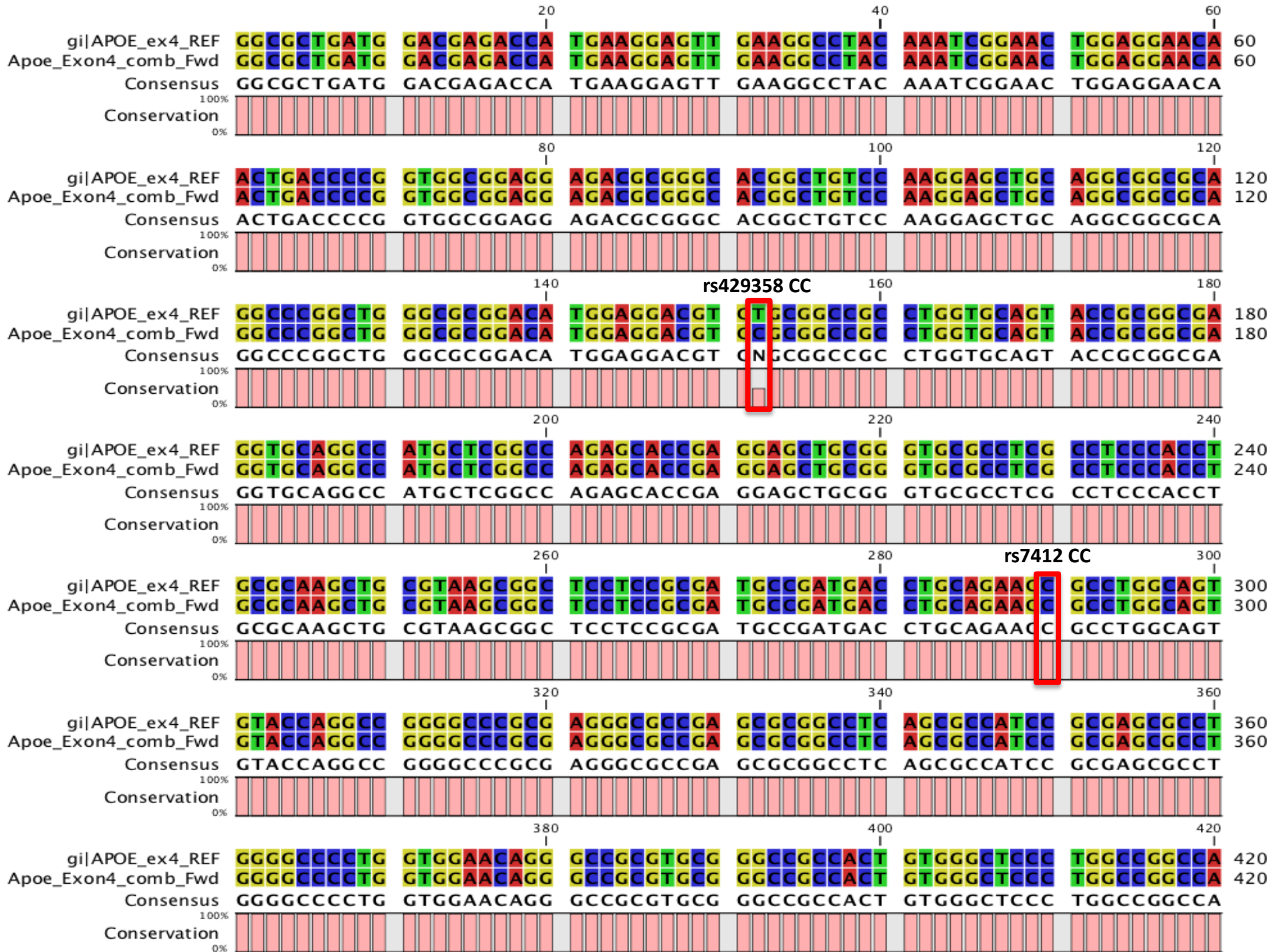
Exon 2: NORMAL

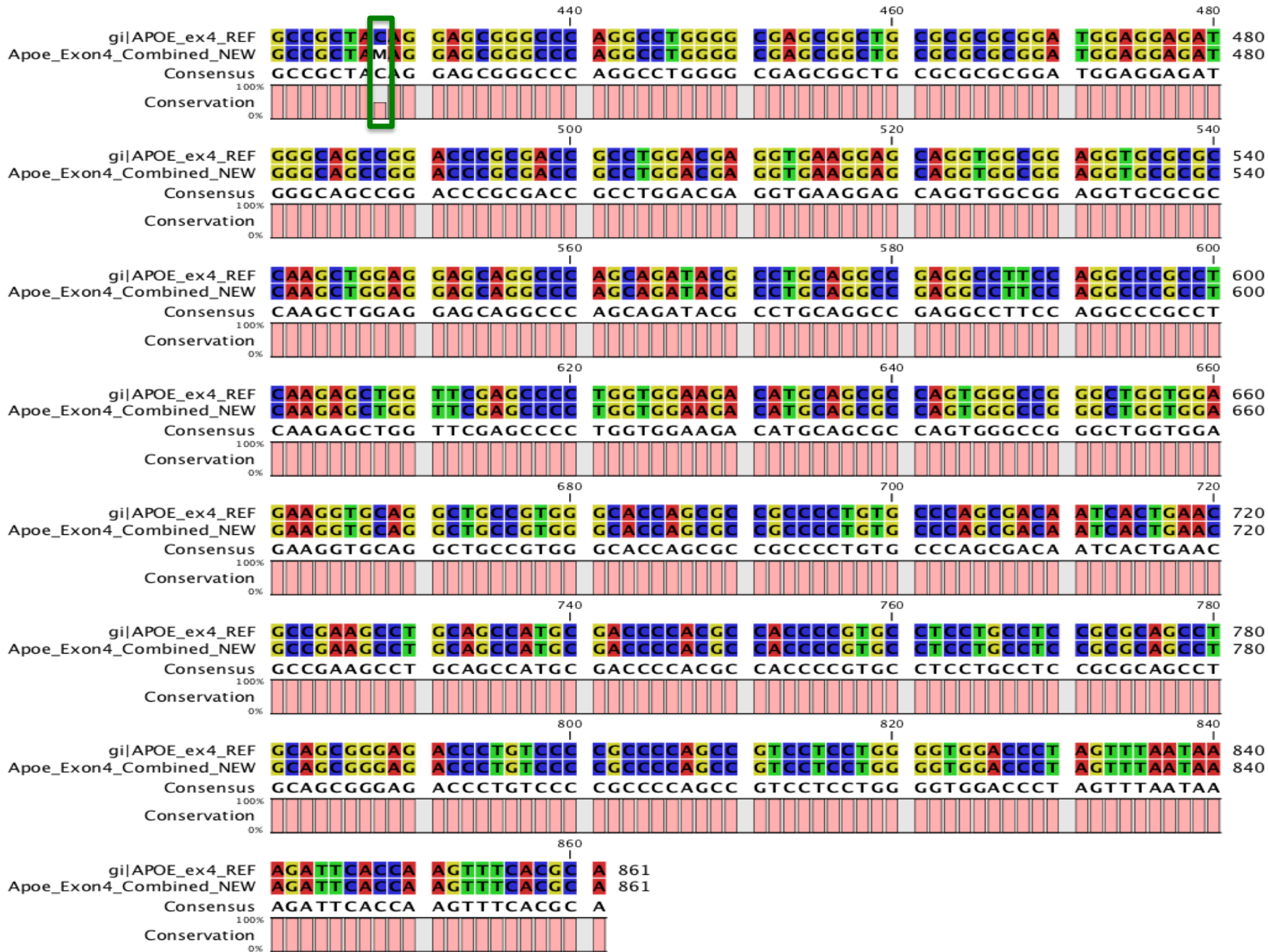


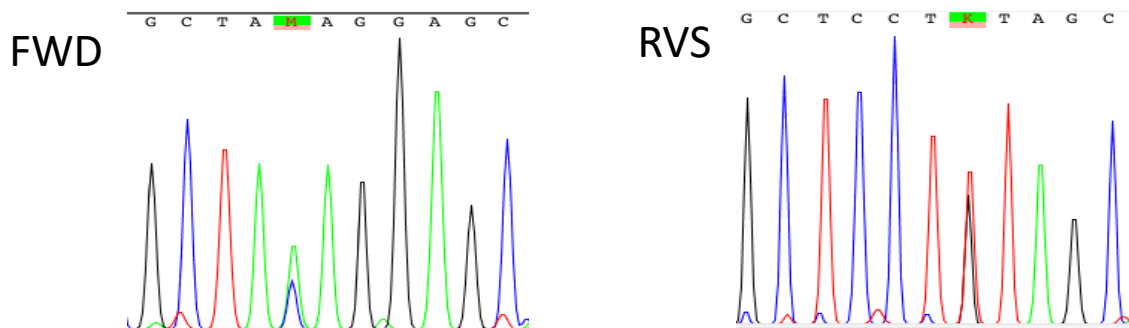
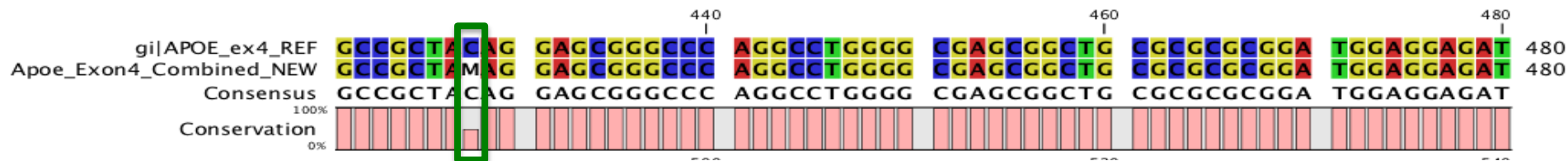
Exon 3: NORMAL



Exon 4







APOE 45412217C>A

Q222K (Gln222Lys)

Polar Neutral → Basic Polar Positive

SIFT: 0.9 (tolerated)

PolyPhen: 0.011 (Benign)