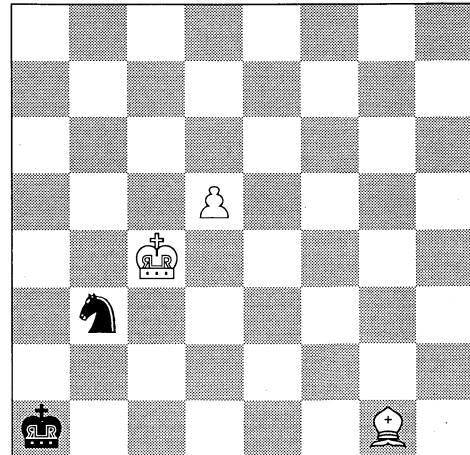
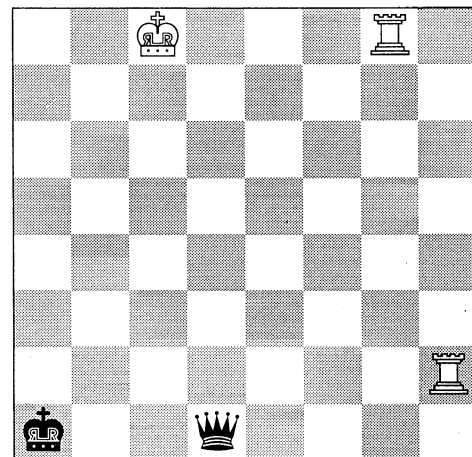


**KBP(d)KN**

1. ... Na5+ 2. Kb5 Nb7 3. Kc6 Na5+ 4. Kb6 Nc4+ 5. Kc5 Nd2 6. Kd4 Nf3+ 7. Ke4 Ng5+ 8. Ke5 (Kf5) Nf7+ 9. Ke6 Ng5+ 10. Kf6 (Kd6) Ne4+ 11. Ke5 Nd2 12. Bc5 Kb2 (Ka2) 13. Bb4 Nc4+ 14. Kd4 Nb6 (Kb3) 15. d6 Kb3 16. Kc5 Nd7+ 17. Kb5 Ne5 18. Ba5 Kc2 (Kb2) 19. Kc5 Nd7+ 20. Kc4 (Kc6) Ne5+ 21. Kd5 Nd7 22. Be1 Kb3 23. Kc6 Ne5+ 24. Kc5 Nd7+ 25. Kb5 Nb8 (Kc2) 26. Bf2 Kc3 27. Kc5 Kd3 28. Kd5 Kc3 29. Ba7 Nd7 30. Ke6 Nf8+ 31. Ke7 (Kf7) Ng6+ 32. Kf7 Ne5+ 33. Ke6 Ng6 34. Bg1 (Bf2, Be3) Nf8+ 35. Ke7 Ng6+ 36. Kf7 (Kd7) Ne5+ 37. Ke6 Nc6 38. d7 Nd8+ (Kb4, Kc4) 39. Kd6 (Kd5) Kb4 (Kb2, Kc4, Kb3, Kc2) 40. Bb6 Nf7+ 41. Ke6 Ng5+ 42. Ke7 Ne6 (Nf7) 43. Kxe6 Kc3 (Kb5, Kc4, Kb3) 44. d8Q Kc4 (Kc2) 45. Ba5 (Qd1, Qd2, Qd4+, Qd5+) Kb5 (Kb3) 46. Bd2 (Ke5, Kd5, Qd2, Qd5+, Qc7) Ka6 (Kc6, Ka4, Kc5) 47. Kd6 (Kd5, Qc7) Kb7 (Kb5, Ka7) 48. Be3 Ka6 49. Qb6#

**KRRKQ**

1. Rgg2 Kb1 2. Rb2+ Kc1 3. Rbe2 Kb1 4. Rhg2 Qc1+ 5. Kd8 Ka1 (Qd1+) 6. Ra2+ Kb1 7. Rad2 Ka1 8. Rgf2 Kb1 9. Kd7 Ka1 10. Rc2 Qd1+ 11. Kc7 Kb1 (Qb1) 12. Rb2+ Ka1 (Kc1) 13. Ra2+ Kb1 14. Rfb2+ Kc1 15. Ra1+ Kxb2 16. Rxd1 Kc2 17. Rd8 (Rd7, Rd6, Rd5) Kb3 (Kc3) 18. Kc6 (Kb6) Kc4 (Kb4) 19. Kb6 (Rd5) Kb3 (Kb4) 20. Kb5 (Kc5, Rc8) Kc3 21. Rd5 (Rd6, Rd7) Kb2 (Kb3) 22. Kb4 (Kc4) Kc2 23. Rd4 (Rd8, Rd7, Rd6) Kb2 24. Rc4 Ka1 (Ka2) 25. Rc2 (Kb3, Ka3) Kb1 26. Kb3 Ka1 27. Rc1#

**INFORMATION FOR CONTRIBUTORS**

Contributors may be interested to know that the *ICCA Journal*, as of Vol. 10, No. 1, is a source for the Institute for Scientific Information® (ISI) for inclusion in the CompuMath Citation Index® (CMCI®), the Automatic Subject Citation Alert (ASCA®) and SCISEARCH®, ISI's on-line database. Author abstracts are now also available in Current Contents on Diskette®, and in on-line files such as SCISEARCH® and Current Contents Search®. Moreover, the Journal is also a source for the Information Company R.R. Bowker for inclusion in the International Serials Database which is a source for Ulrich's International Periodicals Directory and the DIALOG on-line service.

Being included in the CMCI®, the *ICCA Journal* is one of the 400 Journals in mathematics, computer science, statistics, operations research, and related disciplines which is abstracted and/or indexed and/or available as tearsheets; this means that the Journal now is accessible in (on-line) database form.

**Submission of material**

Contributions to the Journal are welcomed in any form, although preferably by E-mail or on an MS-DOS formatted 5.25 or 3.5 inch diskette. In case contributors prepare their manuscripts with high-quality wordprocessors, it should be noticed that text-files in VENTURA, TEX or TROFF format are processable directly by the Editors, thereby alleviating their task considerably.