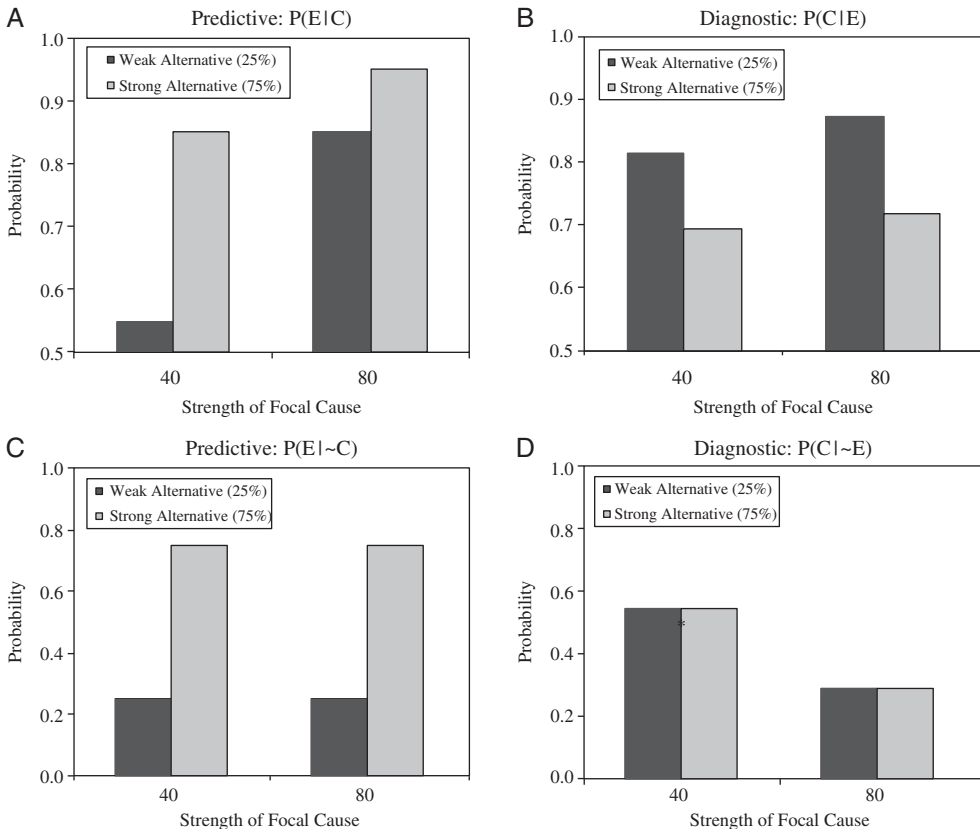


Erratum (Link to paper DOI:10.1080/19462166.2012.682655)

In the published version of “Cognitive shortcuts in causal inference” Figure 2 is incorrect: Figure 6 was used twice, once as Figure 2, once as Figure 6. The correct Figure 2 is shown below.

Figure 2.

Normative predictions for Experiment 1. Predictions are generated assuming a base rate of 0.67 for cause features C_w and C_s . (A) Inferring an effect given the presence of its cause. (B) Inferring a cause given the presence of its effect. (C) Inferring an effect given the absence of its cause. (D) Inferring a cause given the absence of its effect.



In addition, the caption of Figure 10 was incorrect. The correct caption for this figure is: Inference ratings from Experiment 3 as a function of whether the state of the alternative feature was absent, present, or unknown. (A) Inferring an effect given the presence of its cause. (B) Inferring a cause given the presence of its effect. (C) Inferring the effect feature from the alternative. (D) Inferring the alternative feature from the effect. Error bars are standard errors of the mean. $^{\dagger}p < .10$. $*p < .05$. $**p < .01$.